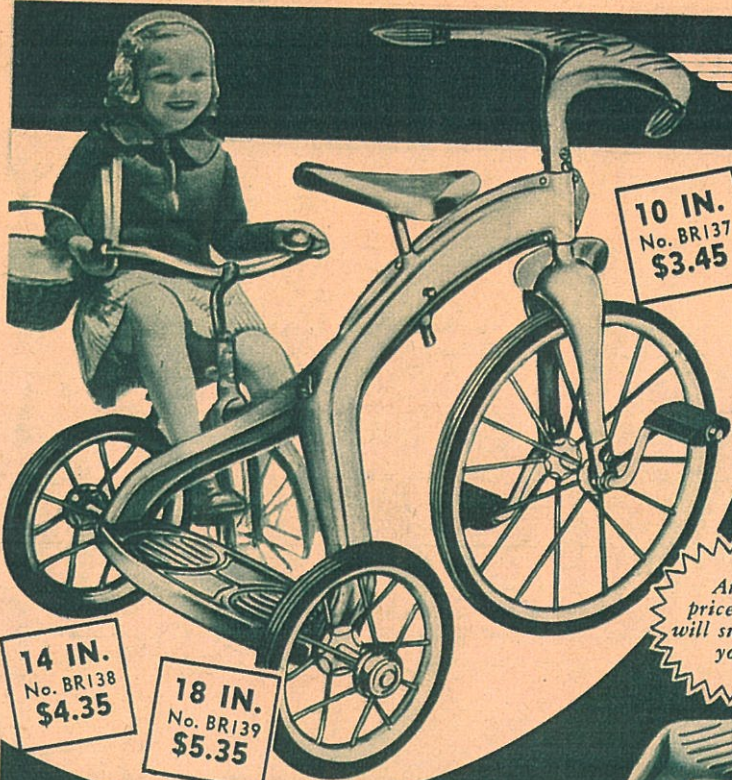


The Sky Line



Never before such features

STREAMLINED STAMPED STEEL FRAME, FORK AND HANDLE BARS. STREAMLINED RUBBER PEDALS AND HAND GRIPS. BIG 5/8 IN. RUBBER TIRES. COMFORTABLE, ADJUSTABLE SADDLE.

"Yes sir, a fellow can have a big, fine streamliner at low cost and here it is" says Billy. "I want you to see this speedy, green velocipede with strong ivory spoke wheels. Don't miss that big steel rear step plate for your passenger."

Beautiful-Streamlined-
no wonder tots love

"SKY-TOT" PEDAL CAR

"The most beautiful pedal car in the world for tots up to 3 years" say Billy and Ruth. "Heavy pressed steel throughout—frame and seat, as well as step plate and safety hoods over rear tires are of one-piece construction. Handle bars have high knee clearance. Artillery spoke wheels. 1/2 in. rubber tires. Streamlined rubber pedals and hand grips. Finished in red and ivory enamel."

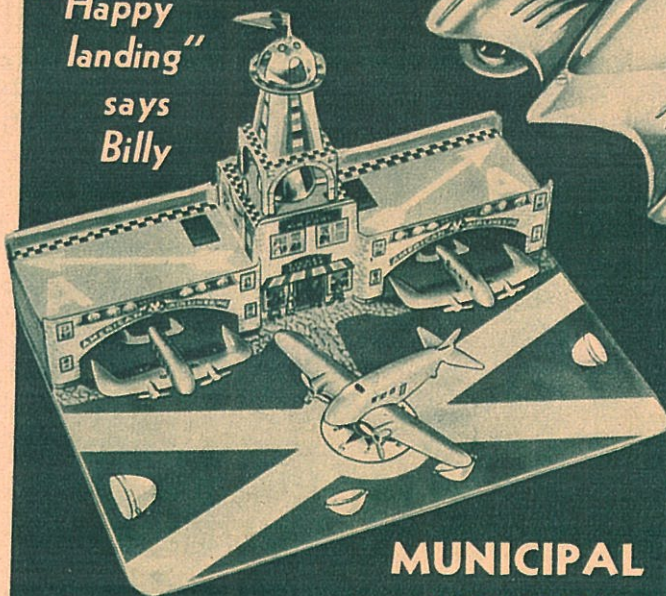
At a price that will surprise you

No. BR143

14 IN.
No. BR138
\$4.35

18 IN.
No. BR139
\$5.35

"Happy landing"
says
Billy



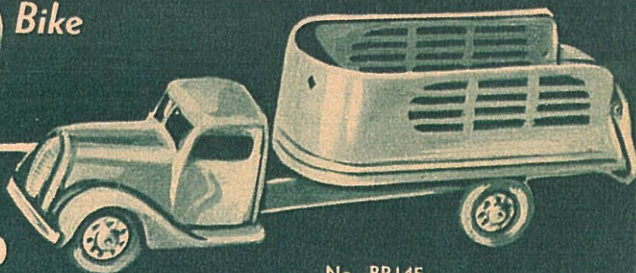
MUNICIPAL AIRPORT

No. BR144

\$1.00 With Electric Lights

"Boys, start your own Airways Line with this airport that is exactly like the real ones, even to its electric beacon lights, windsock, etc." says Billy. Red and green electric lights control incoming and outgoing plane traffic and an electric beacon in the tower guides them safely to the runways on the big landing field. Two 4 1/2 in. and one 7 1/4 in. airplanes to start your line. 2 bulbs furnished. No battery.

The Tot's First Bike

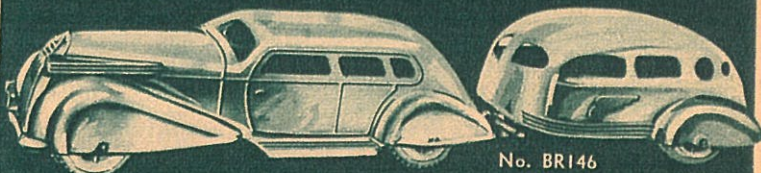


\$1.00

No. BR145

24 1/2 inch SPECIAL DELIVERY TRUCK

"Fellows, set yourself up in the trucking business with this big, strong, good-looking Special Delivery Truck. Just like the big trucking companies use." Billy said to his buddy. "You can pile no end of packages in its big body and there's an end gate to unload. Made of heavy steel to 'take a beating'. Finished in bright red and green."



No. BR146

Plan a trip—stopping at trailer camps! LAND CRUISER CAR AND TRAILER

The thrill of the open road in a "home-on-wheels". Streamlined? You bet—both the big sedan and its detachable trailer with rear opening door to pack your things. 26 1/4 ins. long—think of that! Made of heavy steel, enameled. Both cars have rubber wheels.

89c

VELOCIPEDES "NEWEST THINGS ON WHEELS"



MAXI BALL BEARING

"TUBE" STREAMLINE FRAME. BALL BEARINGS IN ALL WHEELS. STREAMLINE FRONT WHEEL. ADJUSTABLE SADDLE. ADJUSTABLE HANDLE. LARGE HUB CAPS. BICYCLE TYPE WHEELS. 1" RUBBER TIRES.

"Best velocipede value in America today" You'll be so proud of this beauty and try to outdistance 'em all—ball bearings so fast as lightning. Big deck steps for 'easy' to ride. There's a dandy bell too. Blue finish with white wheels."

12 IN.
No. BR140
\$7.95

16 IN.
No. BR141
\$8.25

20 IN.
No. BR142
\$9.95

Every boy will be proud to own this beautiful big wagon priced especially low.



No. BR147

BALL BEARING COASTER WAGON

"Fellows, it's faster because the wheels run on ball bearings" says Billy. "Made to stand up under heavy loads. This wagon is full size too, with heavy steel body 33½ x 15 ins. and 3¾ ins. deep. Has 8 in. disc steel wheels with large hub caps and ¾ in. rubber tires. Bright red enamel finish."

This snappy little STEEL WAGON

pleases little folks

\$1.00



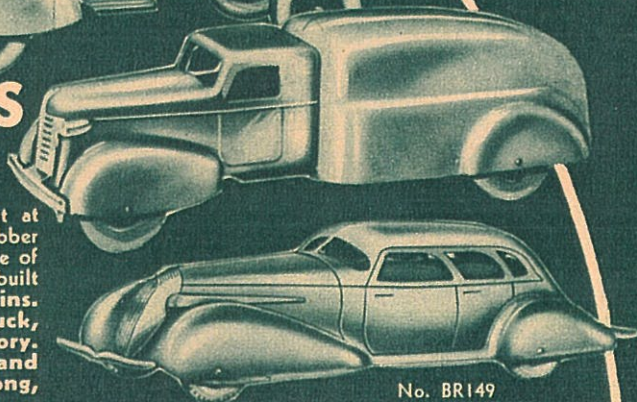
No. BR148

Double Disc Steel Wheels — Rubber Tires

"The ideal 'first' wagon" say Billy and Ruth. "It's sure to last 'til they're ready for the larger one 'cause of its heavy steel construction, side panels having 4 reinforcing ribs. Body size 19 x 9½ ins., 3 ins. deep. 5 in. double disc steel wheels with ½ in. rubber tires. Sturdy undercarriage and curved tubular steel handle. Nothing surpasses in play value for small children this strong red wagon."

your
of these
big
EL TOYS
0c Each

"Every boy will want at least one of these fine, rubber streamlined toys. Made of heavy steel with extra play value built in—Sedan, 15¾ ins. long, red and ivory. Van Truck, 16 ins. long, red and green. Dump Truck, 16 ins. long, red and green."



No. BR149