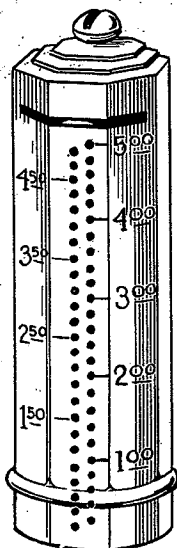


No. 1000—Pop Eye—Registers and opens at \$5.00. Decorated in four colors. Size 2 1/2 inches square. Retails 10c.



No. 10—Gem Dime Bank, new octagon model. Holds and opens at \$5.00. Polished nickel finish. Size 2 3/4 x 7/8. Sold by us for 40 years, now more popular than ever. Retails 10c.



No. 1100—Lucky Dime Register Bank. Polished nickel finish. Registers and opens at \$5.00. Size 2 1/2 inches square. Retails 10c.



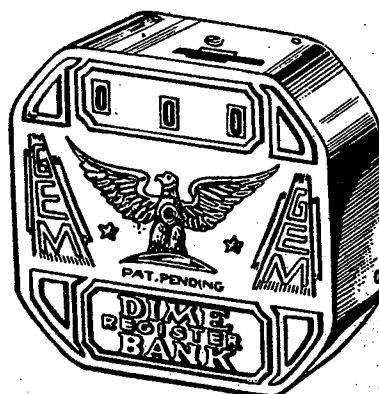
No. 1010—Budget Bank for pennies, nickels, dimes and quarters in separate compartments. Decorated in colors. Holds \$18. Locks with key—size 3 1/2 high and 2 7/8 wide. Retails 20c.

ALL BANKS
AMERICAN MADE

"B & R" SAVINGS BANKS

To Retail From 10c to 50c

Thrift knows no season. "B & R" Savings and Register Banks sell steadily and profitably every day in the year. Call at our Showroom or write us for samples and prices.



No. 998—Gem Dime Register Bank. Opens at \$5.00. Polished nickel finish. Size 2 1/2 inches square. Retails 10c.

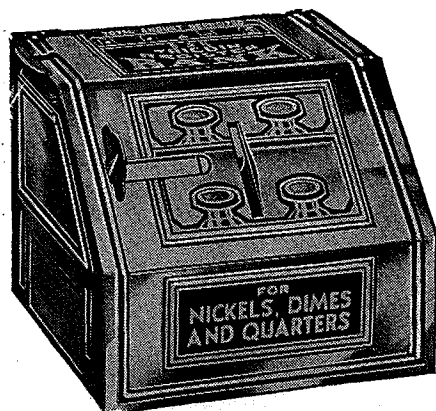
All Banks covered by U. S. Letters Patent Nos. 1,699,232—2,000,323—2,020,498—Des. 97,919.

BEHREND & ROTHSCHILD

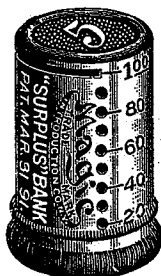
MANUFACTURERS

114-120 East 23rd St., New York

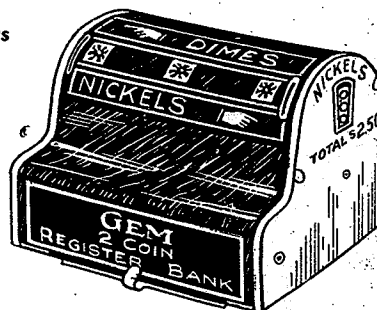
STRAUSS BROS. & CO.—Sole Selling Agents



No. 50—B & R Tri-coin Bank. Polished nickel finish. Black and gold decorated. Registers and adds nickels, dimes and quarters. First coin locks bank which opens at \$10.00. Size 3 1/2 x 3 x 2 7/8. Retails 50c.



No. 5—Magic Nickel Bank. Holds \$1.00 in nickels. Opens when full. Nickel finish. Size 1 1/2 x 1 inches. Retails 10c.

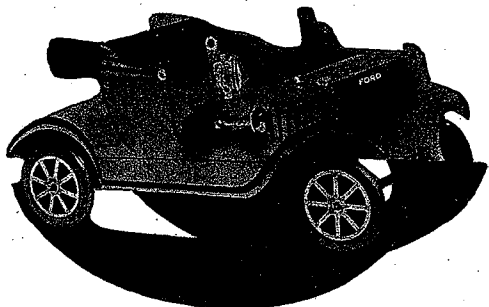


No. 991—Gem two coin Bank for nickels and dimes. Registers and opens at \$7.50. Polished nickel sides decorated center. Size 2 1/2 x 3 1/4 x 2 3/4. Retails 25c.

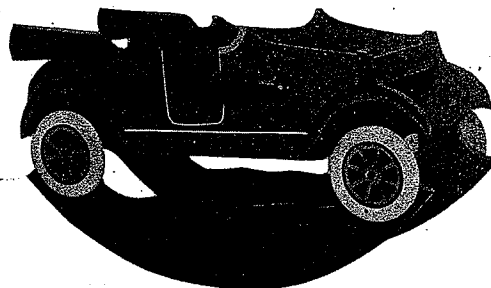
Here Are the Latest Novelties Out Highly Finished in Attractive Colors

This page adv., at this late date, is our traveling representative. So we give you size, price, and all information.

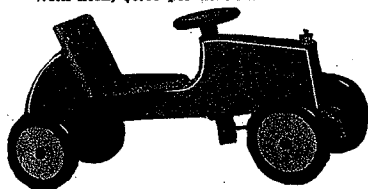
SEND IN YOUR ORDER NOW!



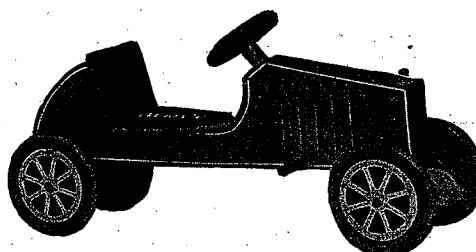
NO. 501, "FORD" SHOOFLY
28½ inches long, 17½ inches high, 13 inches wide, packed 1/3 dozen.
Per Dozen \$27.00
With horn, \$3.00 per dozen additional.



NO. 502, "OVERLAND" SHOOFLY
35½ inches long, 19½ inches high, 13½ inches wide,
packed 1/3 dozen. Per Dozen..... \$42.00
With horn, \$3.00 per dozen additional.



NO. 451, AUTO CAR, JR.
25½ inches long, 12½ inches high, 8½ inches wide, packed
1 dozen. Per Dozen..... \$13.50



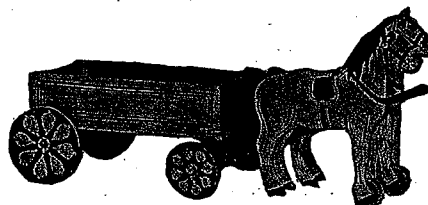
NO. 453, AUTO CAR

No. 452.—29 inches long, 15 inches high, 8½ inches wide,
packed ½ dozen. Per Dozen..... \$19.50
No. 453.—33½ inches long, 16½ inches high, 9½ inches
wide, packed 1/3 dozen. Per Dozen..... \$27.00



PLATFORM SADDLE HORSES

No.	Height	Size of platform	Per doz.
0	10½	9½x3¼	\$4.50
1	12	10 x4	7.50
2	14	12 x4½	9.00
3	15	16½x5	10.50
4	17	19 x5½	13.50
5	18	20 x6½	16.50
6	19½	21½x7	19.50



NO. 303, TEAM AND WAGON

NO. 301, HORSE AND DUMP CART

19 inches long, 11 inches high. Per Dozen..... \$10.50

NO. 302, SINGLE HORSE AND WAGON

27½ inches long, 11½ inches high. Per Dozen.... \$15.00

NO. 303, TEAM AND WAGON

27½ inches long, 11½ inches high. Per Dozen.... \$18.00

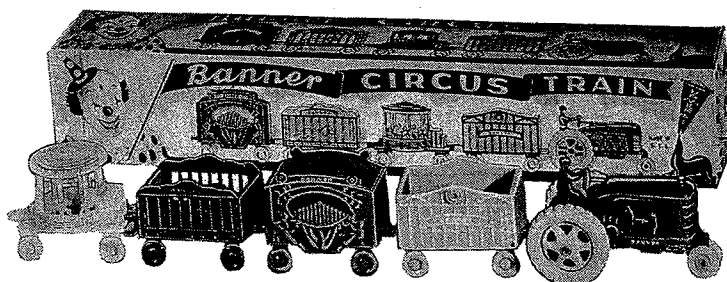
BAKER & BENNETT COMPANY

Manufacturing Specialists 873-875 BROADWAY, NEW YORK, N. Y.

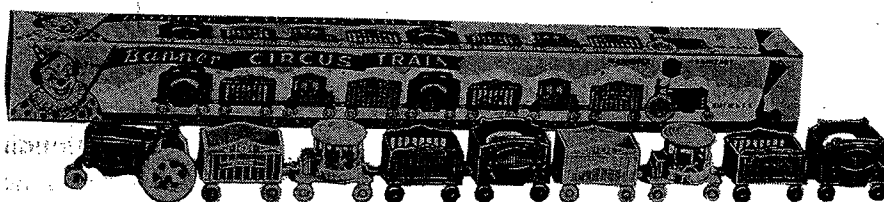
No. 1

on the PLASTIC HIT PARADE

Indoor weather means additional sales and profits with truly popular indoor activity toys. Banner's two circus train sets have captured top-rating honors in store after store throughout the entire country. During winter months these two sets will continue to roll up increasing sales records. Stock them, show them, sell them!



No. 96—For the junior Barnum and Baileys, a complete set of miniature circus cars, made of sturdy plastic in bright, toy-tested colors. Set consists of: 1 tractor with movable wheels, 1 box car, 1 animal cage car, 1 calliope, 1 carousel. Boxed in "longie" two-color 11½" x 2" x 2" carton. To retail for 39 cents.

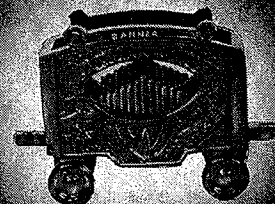
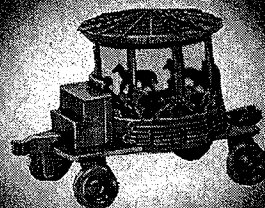
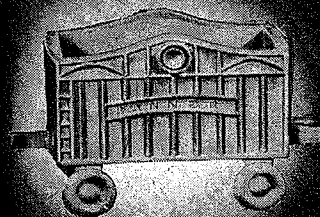
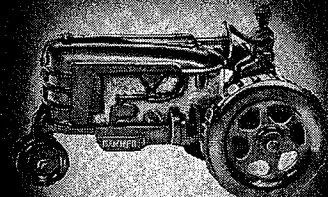


No. 97—It's under the big top for the kiddies this winter when indoor toys are so important and so popular. The king size Banner Circus Train consists of: 1 tractor in multi-color plastic, two box cars, 2 animal cage cars, 2 calliopes, 2 carousels. Novel, easy-to-display longie box in two-colors. To retail for 59 cents.

Banner Plastics Corp.

E. M. Pressner, Pres.

150 Bruckner Blvd., New York 54, N. Y.



THE PRIDE OF AMERICAN DOLL-DOM

HIGHEST QUALITY MOVING-EYE DOLL MADE

Their "Life-Like" Appearance Attracts Everybody
A Line of 100 Numbers, with a Wonderful Assortment of Dresses

ALSO

PLUSH BEARS

ALL-COMPOSITION DOLLS
STUFFED ANIMALS
BALLOONS

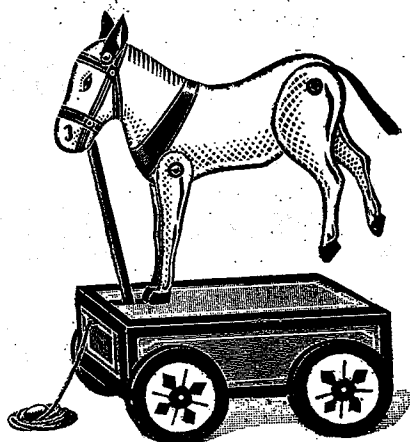
LEATHER NOVELTIES
CELLULOID NOVELTIES
GAMES

and Various Other Novelties

WE CORDIALLY INVITE YOUR INSPECTION OF OUR LINE

AMERICAN TOY & NOVELTY CO., 33 Union Sq., New York

Baumgarten & Company introduced a very attractive line of wooden pull toys recently. These are full of action and music. Roller chimes are concealed in the base of the wagon, and when the child pulls the wagon along the floor the donkey kicks, or the clown's legs move, a spinning ball, keeping time with the music of the chime.



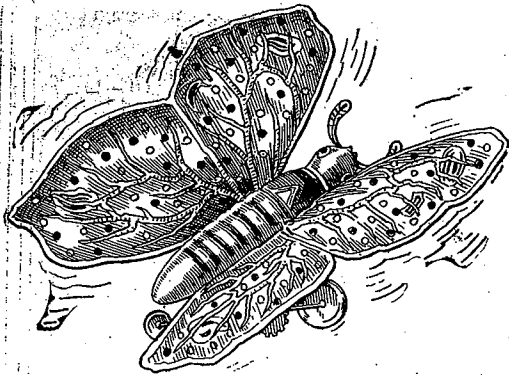
A house—a real, habitable house—on the lawn is just the thing to please the kiddies, and incidentally increase the sales of the shop carrying it, for with such a portable structure as the "Play Villa," recently introduced by The Close-To-Nature Company, of Colfax, Iowa, the natural desire of little folks to

romp in the great outdoors under a protecting room can be fully realized. The Play Villa has been happily named, for it makes a truly delightful playtime abode for youngsters in the summertime, be the weather fair or stormy. Play Villa comes in either white or khaki colored canvas, is 48 inches wide by 57 inches long and 64 inches high, is equipped with wire fly-screen and floor boards, and can be closed tight when necessary to keep out rain. Besides its neat, compact and inviting appearance its simplicity of erection is emphasized by the fact that no tools are required in putting it together. Geo. Borgfeldt & Company, New York, are the Eastern sales representatives for the Close-To-Nature line.

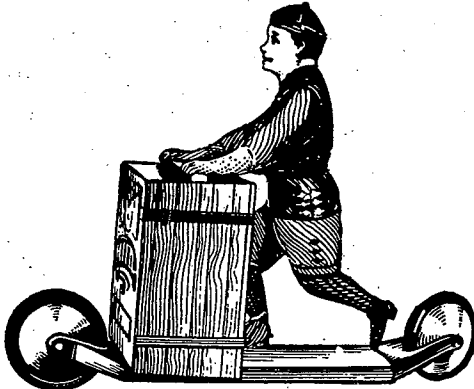
Immediate and advance orders for the "Rite" specialties, says Leo Morse, manufacturer, are in larger volume now than at any previous time in the history of the house. Such original and patented sanitary and educational baby novelties as their nursery picture rattles, nursery beads and chains, rolling toys and blocks, etc., having proved all year round sellers are in continual demand; a constant flow of reorders attesting to the increasing popularity of the "Rite" line.

The A. Schoenhut Company have just introduced a new all-wood walking doll. Like every other Schoenhut toy, this doll is made in the best possible manner, and is built to give satisfaction in every way. When the proud little mother takes the dolly by the hand it will walk along by her side in the most natural manner possible.

1924



MECHANICAL BUTTERFLY
Patent Pending. $6\frac{1}{2} \times 7$ inches.



KIDDO FLYER
No. 487—Size, $6\frac{1}{2} \times 8$ inches. Patent Pending.

"B & R" AMERICAN MADE MECHANICAL TOYS

To Retail At
POPULAR PRICES

*Chock-full of Life,
Action, Fun*

Wind Without Keys

All of our Mechanical Toys are made of metal and propelled by a sturdy keyless spring motor, simple to operate and hard to break. They are Mechanically Perfect and finished in bright attractive colors.

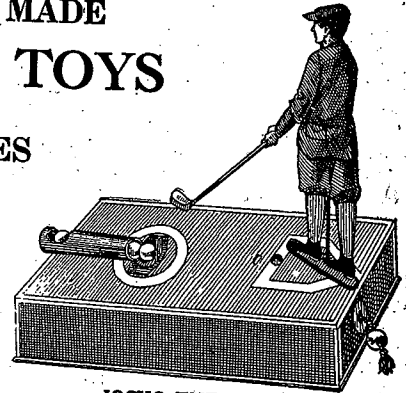
Good Profit Margin for Jobbers.

SAMPLES ON REQUEST.

BEHREND and ROTHSCHILD

STRAUSS BROS. & CO.,
Sole Selling Agents

355 BROADWAY NEW YORK



JOCKO THE GOLFER
Size, $6\frac{1}{4} \times 3\frac{1}{4} \times 6$ inches. Patent Pending.



KIDDO SPECIAL
No. 488—Size, 6×6 inches. Patent Pending.

"LITTLE RED RIDING HOOD"

The Most Popular
Character in
Juvenile Fiction

Made of High
Grade Red
Leatherette



PATENT PENDING

WE SOLD
500 DOZEN
THE FIRST
WEEK MARKETED

You Can't Afford
To Be Without This
Sensational Seller

Packed One to the Box

SEE OUR COMPLETE LINE OF DOLLS AND NOVELTIES AT THE CHICAGO TOY FAIR

Good Profit Margin For Jobbers

JEANETTE DOLL CO., Inc.

684 BROADWAY

Phone: Spring 6286

NEW YORK CITY

Kindly mention PLAYTHINGS when writing to advertisers.



Most People Believe in Economy

The truest economy consists in buying the Most Durable in its line
The Most Durable Doll Stand is the

BUTLER DOLL STAND

It is also the Most Easily Adjusted. It holds the doll Most Firmly. Its weight prevents the doll from being-top heavy.

Its Merits have been proven by time. It is not the cheapest, but it is the best.

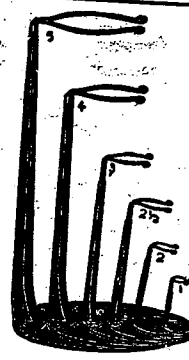
Made in Six Sizes for dolls from 3 1/2 to 42 in. in height.

FOR SALE BY JOBBERS

Manufactured by

BUTLER DOLL STAND COMPANY

Dept. H., 141 South East Ave., Oak Park, Ill.



TRADE-MARK REGISTERED
MAY 29, 1906

SKOOKUM

"Indian word for Bully Good"

Patented February 17, 1914

These character Indian dolls are an exact reproduction of the real Indians and represent chiefs and squaws of various tribes as they are seen on the reservation. They are the most characteristic and striking in design ever produced. Made in two sizes to retail at 75c. and \$1.25 each. We carry a full line of Indian Birch Bark Canoes retailing from 5c. to 25c.



Write our nearest office

THE H. H. TAMMEN CO.

Denver, Colo.

108 East 16th St., New York

410 Grayco Bldg., Los Angeles, Cal.

Biggest Toy Value



"Speed Marvel" Hand Car Retail 25c.

This Handcar is Mounted with Unbreakable Character Doll Operating Automatically When Handcar is in Motion. Samples and Prices Upon Request.

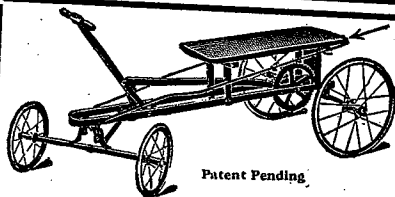
MANUFACTURED BY

BIJOU DOLL COMPANY

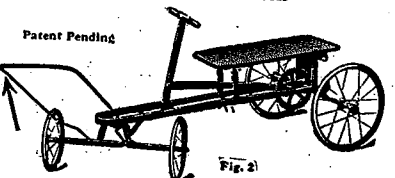
Note the New Address 41-43 Greene St., NEW YORK
Phone Spring 1172

Represented by

The Riemann, Seabrey Co., 11 Union Square, New York



Tongue folded back



Tongue extended forward

"Bi-Cars" and Speedmobiles

The Only Children's Vehicles of Their Kind on the Market

Combination Wagon and Hand-Car

combining the pleasure and utilities of both.

Tongue of Car folds back when used as Hand-Car

Big Seller

Price reasonable

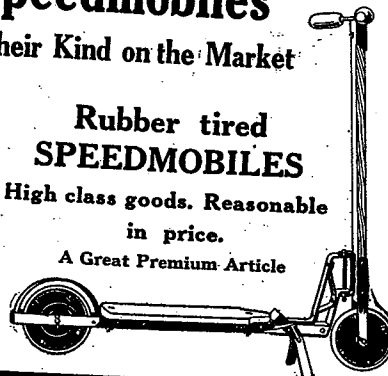
W. J. BAKER MFG. CO.
Newport, Ky.

Manufacturers of Children's Vehicles

Rubber tired
SPEEDMOBILES

High class goods. Reasonable in price.

A Great Premium Article



Ford Has Cut Another Melon

Prices Slashed to Ribbons

"SPEED MARVELS" Now Sell for Two Bits



SPEED MARVEL HAND CAR

25c Retails 25c

The Biggest Toy Value on Earth

Walking Will Become a Lost Art Now That You Can
Make Your Customers Auto Owners For a Quarter.

This Handcar is Mounted with Unbreakable Character Doll
Operating Automatically When Handcar is in Motion.

Samples and Prices Upon Request.

MANUFACTURED BY

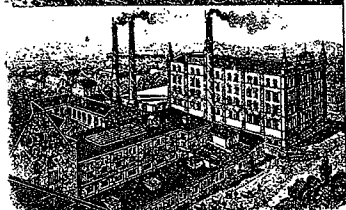
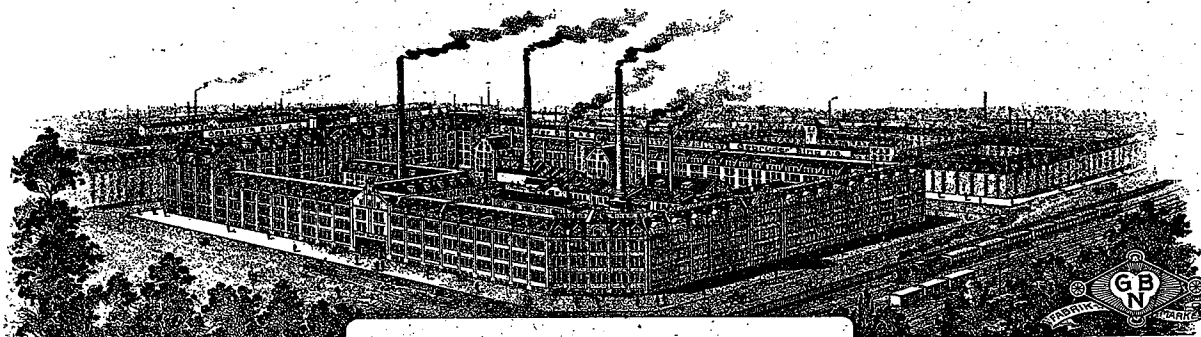
BIJOU DOLL COMPANY

Note the New Address
Phone Spring 1172

41-43 Greene Street, NEW YORK

REPRESENTED BY

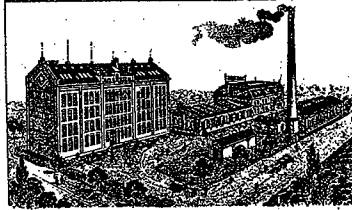
The Riemann, Seabrey Co., 11 Union Square, New York



ENAMEL AND STAMPINGWORKS GRUENHAIN.
(SAXONY)



GENERAL OFFICES AND WAREHOUSES, NUREMBERG.



ENAMEL AND STAMPINGWORKS GRUENHAIN.
(SAXONY)

BING BROTHERS, A.G., NUREMBERG.

(BAVARIA.)

CABLE-ADDRESS
BINGWERKE NUREMBERG.
A.B.C. CODE USED 5TH EDITION
TELEPHONE 4044-4051.

Nuremberg

SHOW ROOMS:
LONDON E.C.: 25 Ropemaker Street.
BERLIN S.W.: Ritterstrasse 79.
HAMBURG: Neuer Wall 69.
PARIS: Rue Beranger 19.
MILAN: Foro Bonaparte 17.
AMSTERDAM: Keijzers Gracht 37.
BARCELONA: Pelajo 7.
ZÜRICH: Uraniastrasse 11.
BRUXELLES: 99B⁹⁹ Anspach

Telephone No.
Madison Square
3577

New York, December 24, 1910
381 Fourth Avenue

Gentlemen:

We beg to inform you that our samples will be ready for inspection, at the above address, on January 1st, and we solicit your esteemed visit.

Being strangers in this country, and wishing to make arrangements, to be enabled to give proper and prompt attention, you would oblige and assist us greatly, by dropping us a line on seeing this letter, giving us the date of your intended visit.

Awaiting to hear from you, we have the honor to remain

Yours faithfully,

BING BROS., A.G., NUREMBERG.

John Bing,

Sole Representative

United States and Canada.

Kindly Mention PLAYTHINGS When Writing to Advertisers.

At the Leipzig Fair:
Königshaus Markt 17/1

**LARGEST MAKERS OF
HOUSE AND KITCHEN
FURNISHING GOODS**

Tin, wire, brass, nickel and
copper ware and
all kinds of
enamelled specialities.

**LARGEST MANUFACTURERS
IN THE WORLD OF
TOYS.**

Metal Toys,
Enamelled Toys,
Instructive mechanical,
optical and electrical Toys,
Felt Toys.
General Toys
of every description.

About 4000 hands employed.



Bing Toys



IN NEW YORK STOCK

Bing's Mechanical Trains (springs guaranteed for one year).

Horizontal and Vertical Steam Engines.

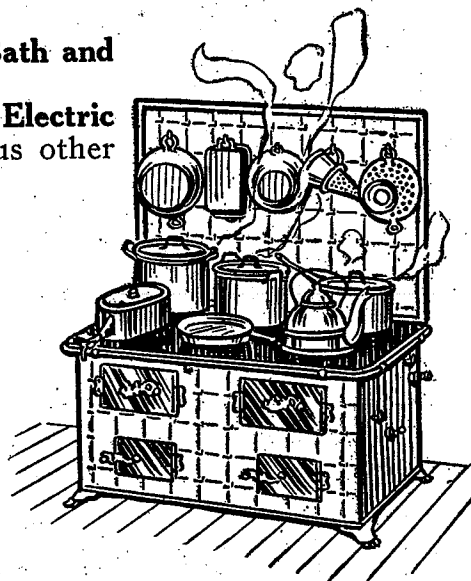
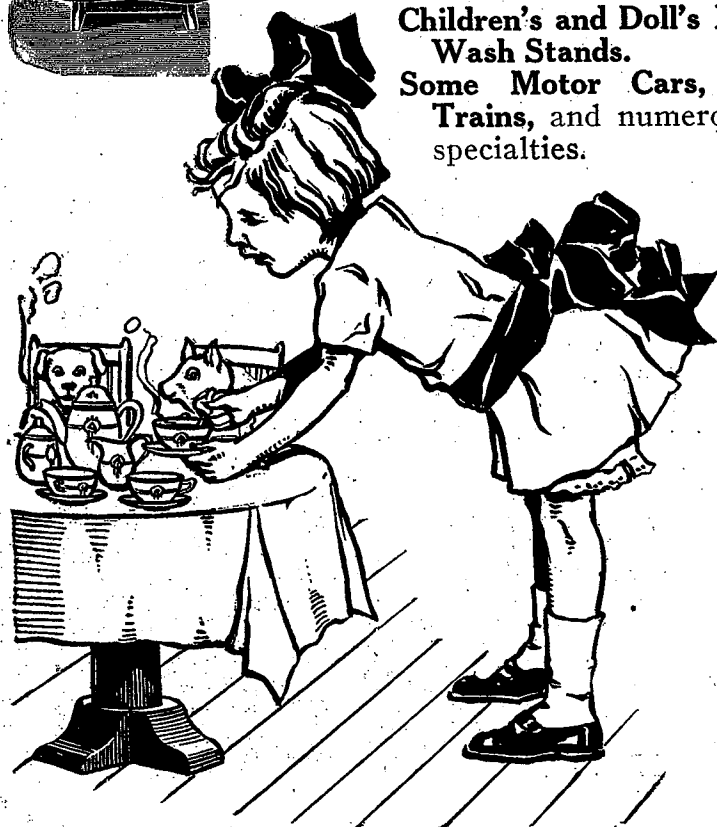
Felt and Plush Animals.

Toy Kitchen Ranges and Stoves.

Enamel Tea and Kitchen Sets.

Children's and Doll's Bath and Wash Stands.

Some Motor Cars, Electric Trains, and numerous other specialties.

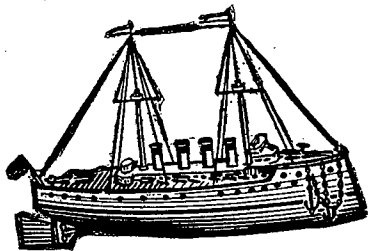
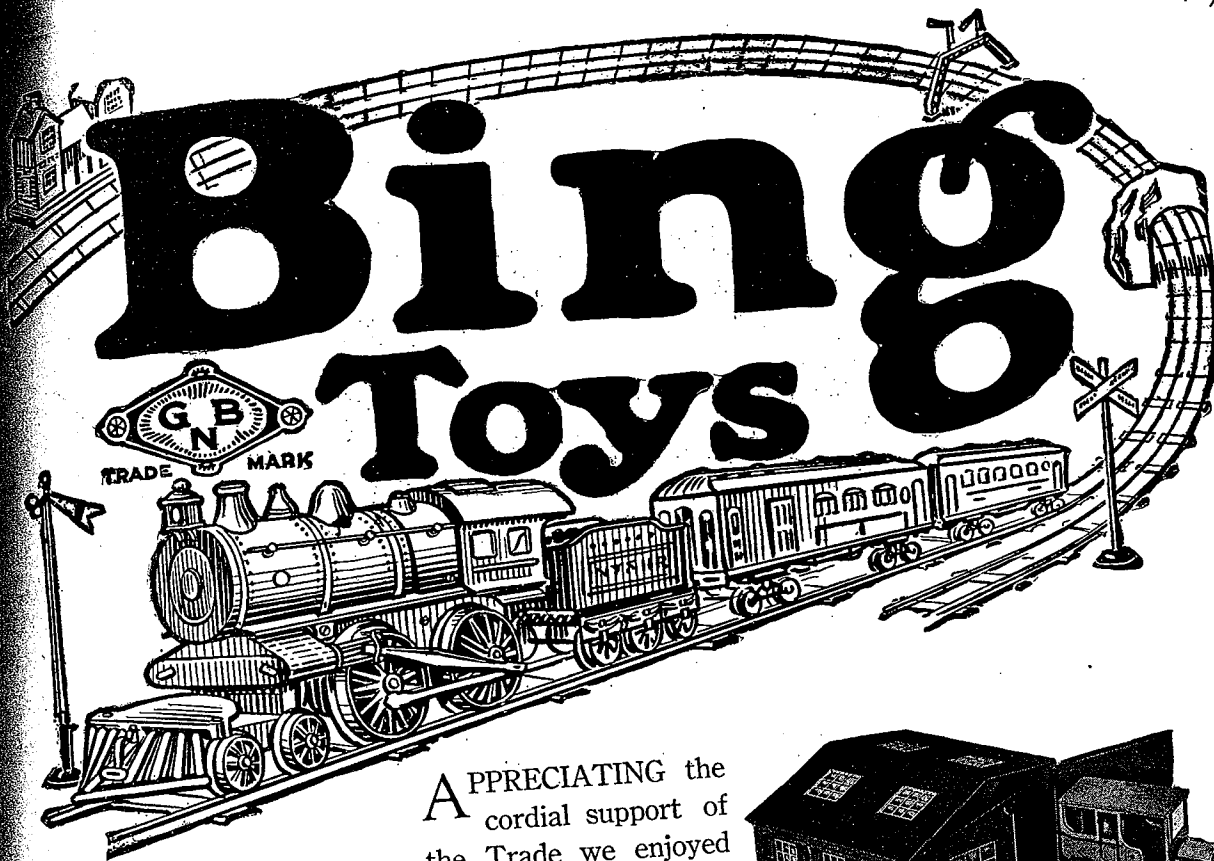


JOHN BING

381 Fourth Ave.
Corner 27th Street

NEW YORK

1922



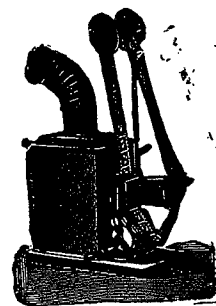
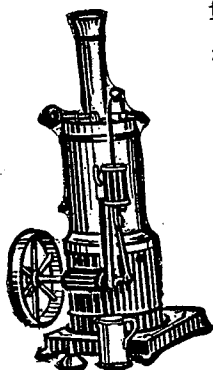
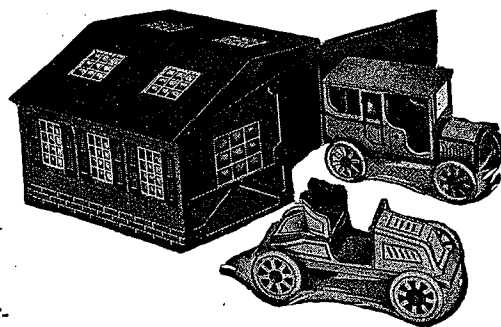
APPRECIATING the cordial support of the Trade we enjoyed during 1921, we take pleasure in announcing an unusual opportunity to serve you.

Although in some quarters, due to conditions

of exchange and a shortage of materials, German manufacturers are in an unfavorable position, nevertheless, on account of the immense resources at the disposal of the eighty manufacturers we have the honor to represent, we are able to make most attractive contracts for our friends here.

Moreover, we are probably the only firm in this country which can quote definite factory prices.

Our line of samples is now on display and we invite you to visit our Show Rooms at your earliest convenience.



JOHN BING COMPANY
IMPORTERS AND SOLE SELLING AGENTS FOR ASSOCIATED MANUFACTURERS

119 WEST 40th STREET
NEW YORK

Kindly mention PLAYTHINGS when writing to advertisers.

Bing Toys



Automobiles in every conceivable size and design, and at all prices.

The 1914 Line is Bigger and Better Than Ever

No toy department next season will be complete without a full representation of **BING TOYS**, and, before making your arrangements for 1914, you owe it to yourself and your house

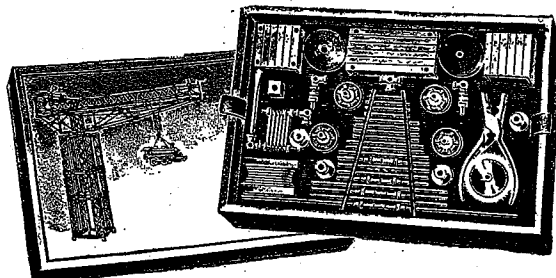
to inspect the many new novelties now on view.

Every one of the 30,000 different articles we manufacture is backed by a guarantee of quality that means **protection** for you and **satisfaction** for your customer.

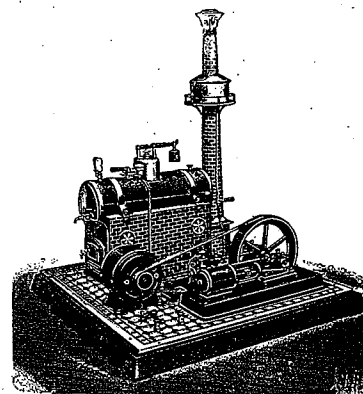
After long experiment, we have perfected for 1914, a line of **Electric Railway Trains** that are positively "fool-proof;" they cannot get out of order, and every dealer will be quick to realize what this means to his toy department in satisfied trade.

Increased production and many innovations in manufacturing have made it possible for us to announce considerable price reductions on many lines of **BING** products. Add to this advantage the enormous trade we are building through our National advertising, from which our dealers directly benefit, and you will see the advantage of featuring **BING TOYS** during the coming season.

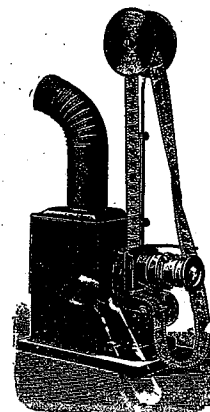
Don't overlook the exceptional line of **BING PLUSH ANIMALS**—lifelike, popular and a positive pulling item in any toy department all year 'round. A handsome catalogue is now ready for these animals, so you should send us your request for a copy at once.



Ask about the Bing Constructor—one of this year's biggest sellers.



The biggest and best line of mechanical toys brought into this country. Every design the work of a master mechanic.



A brand new line of moving picture machines, using standard educational films.

Come in to see us about 1914—we shall have many interesting things to tell you.

BING BROS., Manufacturers

JOHN BING

Sole Representative

**381 FOURTH AVE.
NEW YORK**



Inspect Our
Line of
Mechanical
Toys Before
Placing Your
Order for 1914

Toy buyers who keep abreast of the trade always prefer BING MECHANICAL TOYS. This will be especially true this year, because of the many improvements we have made throughout our line. For 1914 we show Electric Railway Trains that are absolutely "fool-proof." This means greater sales in your toy department and greater satisfaction to your trade.

We are advertising our toys in national publications all over America, and our efforts to stimulate a nation-wide demand for Bing Toys warrants your hearty support.

Improvements in manufacturing and increased output enable us to offer many price-reductions in our line that will interest you.

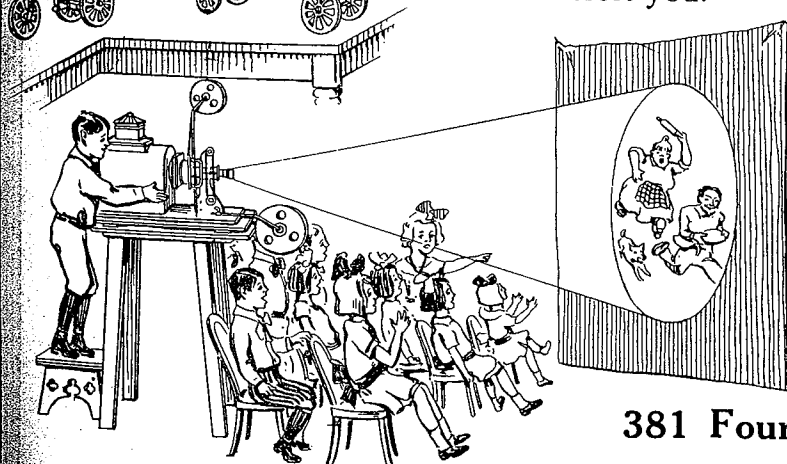
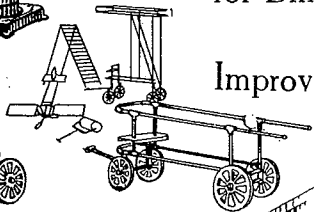
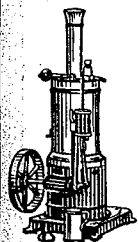
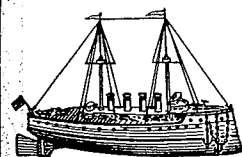
Remember the guarantee of quality back of every one of our 30,000 articles, and examine our stock before going elsewhere.

Bing Bros., Manufacturers

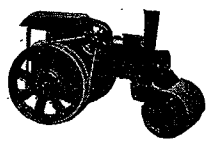
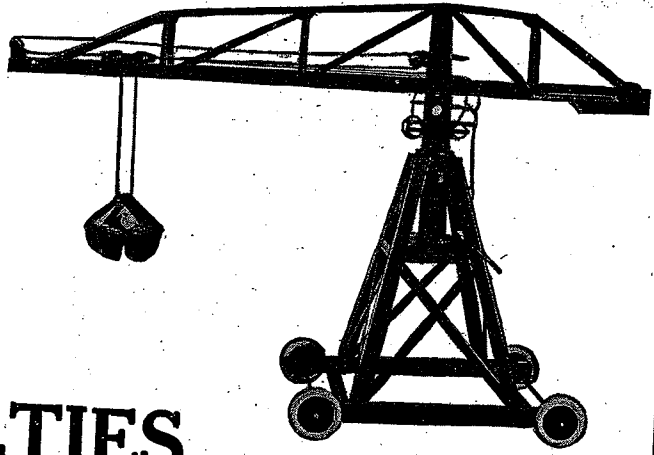
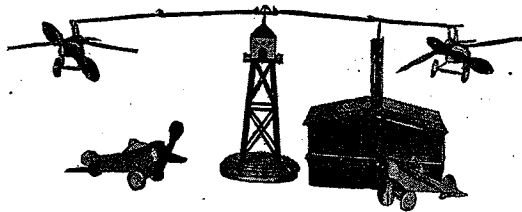
John Bing

Sole Representative

381 Fourth Avenue, New York



1925



BING NOVELTIES For 1925

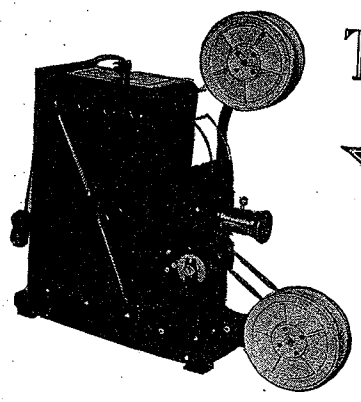
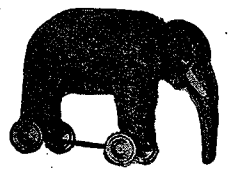
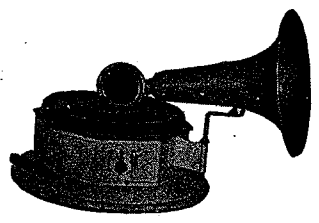
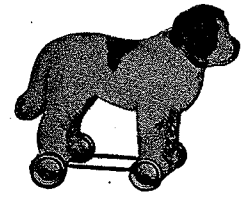
Surpass All Previous Efforts

Unquestionably unbeatable from the standpoint of price, number of exclusive novelties, and quality.

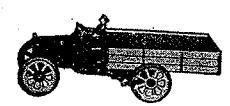
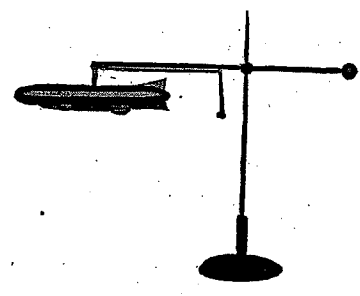
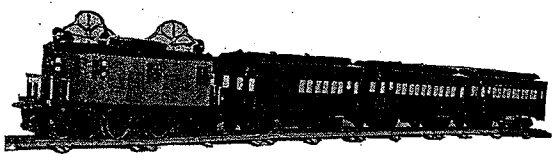
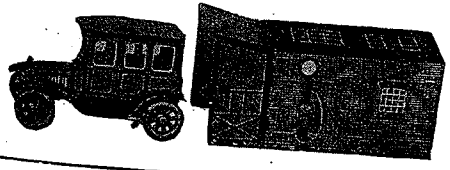
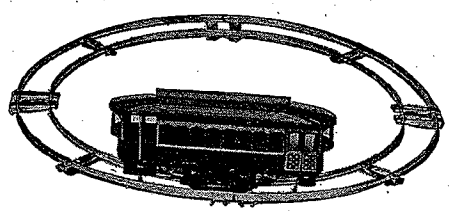
Just a few of the new items are illustrated.

The low prices demand the attention of every buyer.

You are cordially invited to call.



THE BING CORPORATION
119 W. 40TH ST.
New York



Kindly mention PLAYTHINGS when writing to advertisers.