

# 1939 LINCOLN LOGS TRADE CATALOG AND PRICE LIST

8 ½ in. wide by 11 in. tall

12 Pages

# LINCOLN LOGS AND ALLIED TOYS



**LARGE LINCOLN LOGS** *Interchangeable with* **LARGE LINCOLN TIMBERS**

*Also*

**SMALL LINCOLN TIMBERS**

*Interchangeable with*

**STANDARD LINCOLN LOGS**

**UNBREAKABLE METAL FIGURES**

*of exactly the right size to go with our*

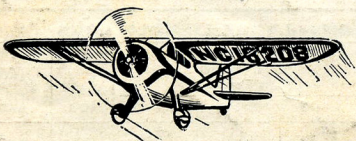
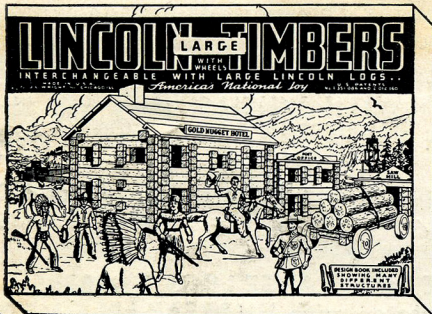
**CABINS, FORTS, BARNs and RAILROAD STATIONS**

**New items in PRE-SCHOOL TOYS,**

**LEAD and PLASTER KASTERS** for the older children

*and the*

**FAMOUS "JOE OTT" Line of AIRPLANE CONSTRUCTION KITS**

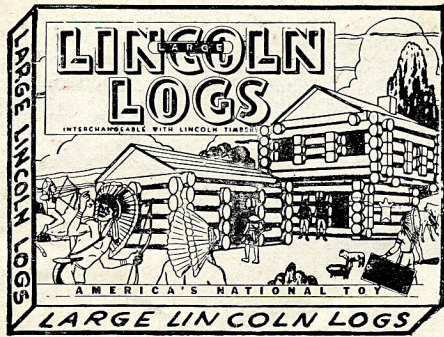


## INDEX

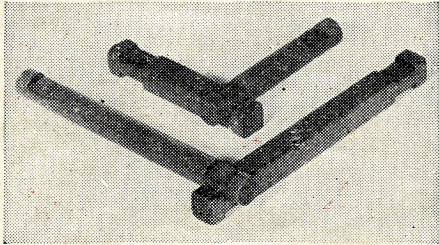
	Page		Page
Airplanes—Model Kits	6 & 7	Lumber	5
Bricks	3	Metal Figures	11
Display Material	12	Plaster-Kasters	8 & 9
Lead-Kasters	9	Pre-School Toys	10
Logs, Large	2	Rubber Molds	8 & 9
Logs, Standard	3	Timbers	4

Manufactured  
By

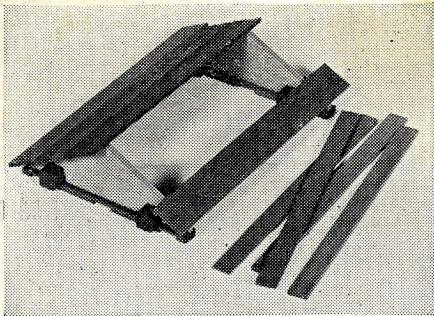
**J. L. WRIGHT, Inc.** 1443 MERCHANDISE MART **CHICAGO**



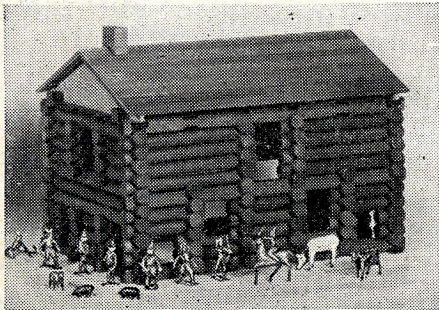
Large attractive Picture-top Box in four colors.



Illustrating the use of Logs and Timbers together.



Showing the new Roof and Gable construction.



One of the many ingenious and instructive designs that can be built with the De Luxe Set of Logs and Timbers.

# The Original LINCOLN LOGS

The educational as well as the play value of LINCOLN LOGS has long been recognized by leading child psychologists and also by parents, as they are designed to encourage the natural desire of children to build things with their hands. They quickly open the way to the expression of ideas as well as to the development of manual skill.

LINCOLN LOGS are made of seasoned hardwood, stained brown to resemble rough hewn logs, and are waxed and polished to give them a smooth and durable finish. The quality and workmanship of LINCOLN LOGS are the same in ALL sets. The difference in the sizes of the log units and the number of pieces in the sets determine the differences in price. Full instructions for building are included with all sets. LINCOLN LOGS are now made in two sizes. The Standard Logs which are  $\frac{5}{8}$ " in diameter are described and shown on the opposite page. The Large Logs which are  $\frac{3}{4}$ " in diameter are described and shown on this page.

## LARGE LINCOLN LOGS Interchangeable With LINCOLN TIMBERS

See  
Page 4

These new large LINCOLN LOGS are  $\frac{3}{4}$  inch in diameter with the spaces between the notches multiples of this diameter. The assortments in the various sets have been carefully worked out to permit the largest possible number of combinations.

### Set No. 1L—Large LINCOLN LOGS with WHEELS — 77 Pieces and DESIGN BOOK

LINCOLN LOGS in this Set are  $\frac{3}{4}$  inch in diameter, same as the LINCOLN SQUARE TIMBERS shown on page 4. Logs and Timbers are interchangeable permitting the building of a large number of models.

Retail Price \$1.00

### Set No. 2L—127 PIECES WITH WHEELS, Long and Short Roof Planks and DESIGN BOOK

Retail Price \$2.00

### Set No. 3L—173 Pieces, including Extra Long Logs and Design Book

Retail Price \$3.00

### Set No. 5LTF—DE LUXE Set of LARGE LOGS, TIMBERS— $\frac{3}{4}$ inch Diameter, with UNBREAKABLE METAL FIGURES and DESIGN BOOK

Our largest and finest Set consists of interchangeable LARGE Logs and Timbers, Wheels and Extra Long Logs. To increase the play value of this attractive Set we have added the unbreakable Metal Soldiers of 1812, Indians, Pioneers and Farm Animals. We also include a strong mesh bag which serves as an excellent container for the Logs and Timbers when not in use.

Retail Price \$5.00

#### PRICES and SPECIFICATIONS—LARGE LINCOLN LOGS

Cat. No.	Retail Price	Pcs. Per Set	Log Dia. In.	Size of Box In Inches			Sets Per Carton	Wt. Per Carton
				Long	Wide	Deep		
1L	\$1.00	77	$\frac{3}{4}$	17 $\frac{3}{8}$	12 $\frac{1}{2}$	$\frac{3}{8}$	24	67
2L	2.00	127	$\frac{3}{4}$	17 $\frac{3}{8}$	12 $\frac{1}{2}$	1 $\frac{5}{8}$	12	64
3L	3.00	173	$\frac{3}{4}$	17 $\frac{3}{8}$	12 $\frac{1}{2}$	2 $\frac{3}{8}$	6	50
5LTF	5.00	241	$\frac{3}{4}$	17 $\frac{3}{8}$	12 $\frac{1}{2}$	3 $\frac{3}{4}$	6	60

*Standard*

# LINCOLN LOGS

$\frac{5}{8}$  inch in Diameter—Interchangeable with  
**SMALL LINCOLN TIMBERS** See Page 4

Set No. 1—Original LINCOLN LOGS Set, 49 PIECES— $\frac{5}{8}$  inch in Diameter  
 Set consists of enough pieces to make cabins, bridges etc.  
 Retail Price 75c

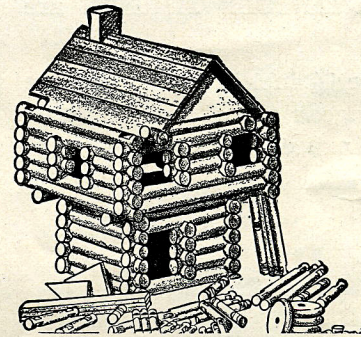
Set No. 2—DOUBLE Set with Wheels, 100 PIECES— $\frac{5}{8}$  inch in Diameter  
 For building a large number of interesting designs such as  
 cabins, wagons, bridges, towers etc. Retail Price \$1.50

Set No. 3—COMPLETE Set, 172 PIECES— $\frac{5}{8}$  inch in Diameter  
 The possible combinations of this Complete Set are practically unlimited. Set also has extra long logs, colored roof planks, wheels and chimney.  
 Retail Price \$3.00

Design Books are included with each of the above Sets.



This illustration shows the picture-top box in which Standard Lincoln Logs are packed. This box is attractively printed in four colors.



The above Blockhouse is one of the many designs to be made with Lincoln Logs.

PRICES and SPECIFICATIONS—STANDARD LINCOLN LOGS								
Cat. No.	Retail Price	Pcs. Per Set	Log Dia. In.	Size of Box In Inches			Sets Per Carton	Wt. Per Carton
				Long	Wide	Deep		
1	\$ .75	49	$\frac{5}{8}$	12 $\frac{3}{4}$	10 $\frac{3}{4}$	$\frac{3}{4}$	24	44 Lbs.
2	1.50	100	$\frac{5}{8}$	12	10 $\frac{3}{4}$	1 $\frac{3}{8}$	12	38 Lbs.
3	3.00	172	$\frac{5}{8}$	16 $\frac{3}{4}$	10 $\frac{3}{4}$	2 $\frac{1}{8}$	6	36 Lbs.

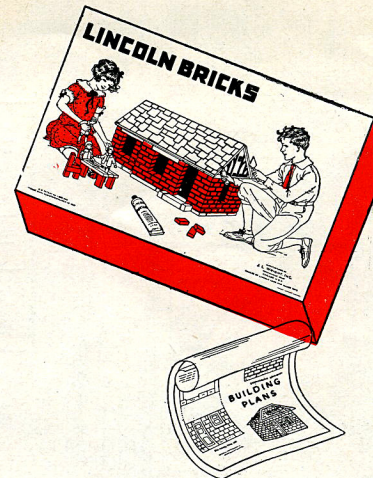
# LINCOLN BRICKS WITH MORTAR

## MINIATURE CONSTRUCTION MATERIAL

LINCOLN BRICKS With Mortar are ideal Toys for stimulating the imaginative and creative efforts of children and aiding in the developing of ideas. When used with LINCOLN LOGS and TIMBERS there is no limit to the interesting and constructive combinations possible to devise with them.

LINCOLN BRICKS may be used with LOGS and TIMBERS to make chimneys, foundations, walks, fences, piers, bridge approaches and a host of others that will intrigue the ingenuity of a child. They are the right size to be hauled, along with LOGS and TIMBERS, on miniature freight cars and transferred by trucks to the building sites.

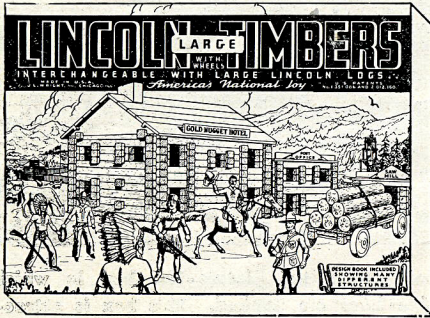
This popular Construction Toy has been greatly simplified and improved. It appeals to children of all ages. It is attractively packed in a four-color picture-top box. This Set includes bricks, foundation stones, new wooden roof, gable ends and grooved timbers, gas station pump, trowel, mortar and design book.



The Mortar supplied with the Set is soluble in warm water and may be soaked off permitting the Bricks to be used over and over again.

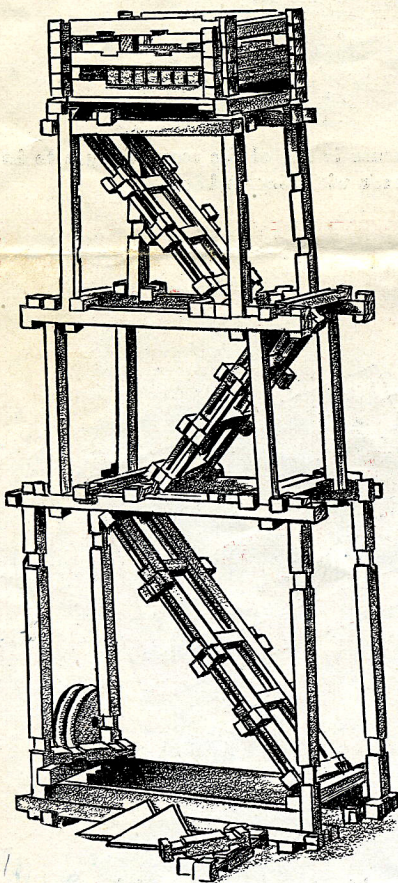
PRICES AND SPECIFICATIONS							
	Cat. No.	Retail Price	Size of Box In Inches			Sets Per Carton	Wt. Per Carton
			Long	Wide	Deep		
LINCOLN BRICKS With Mortar.....	20	\$2.00	16 $\frac{1}{2}$	10 $\frac{1}{2}$	1 $\frac{1}{2}$	12	37 Lbs.

# LINCOLN TIMBERS SQUARE INSTEAD OF ROUND



Above illustration shows the attractive four-color picture-top box in which LINCOLN TIMBERS are packed.

All of the  $\frac{3}{4}$  inch Timber Sets are interchangeable with the Large Lincoln Logs shown on Page 2.



The above Tower is only one of the many interesting designs that can be built with Lincoln Timbers. Design Books included with Sets show models and give detailed instructions for building them.

LINCOLN TIMBERS (square), designed for younger children, have become an outstanding building toy. The construction principles used in LINCOLN TIMBERS are the same as those used in the famous LINCOLN LOGS (round). Large  $\frac{3}{4}$ " diameter LINCOLN TIMBERS are interchangeable with the large  $\frac{3}{4}$ " round LINCOLN LOGS listed on page 2. This combination of Logs and Timbers makes possible the building of a great variety of interesting models.

All Sets of LINCOLN TIMBERS are stained brown and polished. Roof planks, wheels, gables and chimneys in the larger Sets are brightly colored. Full instructions for building are included with all Sets. LINCOLN TIMBERS are made in two sizes, Small Timbers— $\frac{5}{8}$ " square; Standard Timbers— $\frac{3}{4}$ " square.

**Set No. AA—SMALL TIMBER SET, 40 PIECES— $\frac{5}{8}$  inch Square—Interchangeable with STANDARD LINCOLN LOGS**

A brand new Set of Timbers,  $\frac{5}{8}$  inch in diameter which can be used with the Standard LINCOLN LOGS. Designs included. **Retail Price 25c**

**Set No. A—LINCOLN TIMBERS, 49 PIECES— $\frac{3}{4}$  inch Square—Interchangeable with Large LINCOLN LOGS**

Set consists of Timbers, Roof Planks, Gables and Chimney. Instructions for building many designs included. **Retail Price 50c**

**Set No. 1T—LINCOLN TIMBERS with WHEELS, 77 PIECES— $\frac{3}{4}$  inch Square**

One of the most popular LINCOLN TIMBER Sets. Its 77 pieces, which include wheels, encourage the imagination of the child in building a wide variety of models. Design Book included. **Retail Price \$1.00**

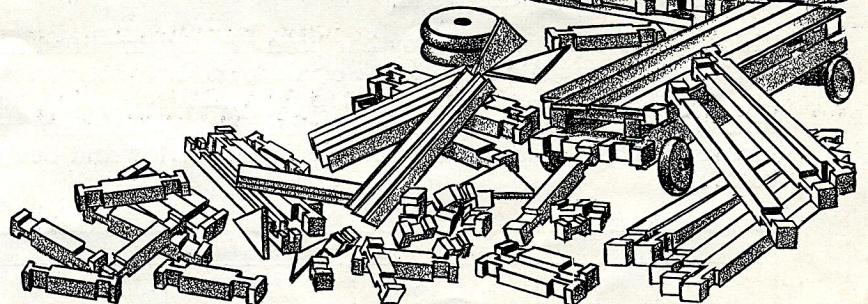
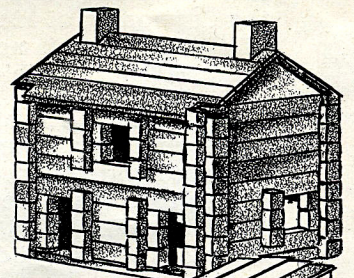
**Set No. 2T—LINCOLN TIMBERS, 127 PIECES— $\frac{3}{4}$  inch Square**

Design Book with this Set of LINCOLN TIMBERS shows a large number of interesting structures that can be built with its 127 pieces. **Retail Price \$2.00**

**Set No. 3T—COMPLETE SET OF LINCOLN TIMBERS, 173 PIECES— $\frac{3}{4}$  inch Square**

This Complete Set of 173 pieces is our largest Set of Timbers. Design Book which is included with each Complete Set shows a large number of designs such as doll houses, blockhouses, trailers, trucks, fences and many others. **Retail Price \$3.00**

Prices and Specifications—SMALL LINCOLN TIMBERS								
Cat. No.	Retail Price	Pcs. Per Set	Log Dia. In.	Size of Box In Inches			Sets Per Carton	Wt. Per Carton
				Long	Wide	Deep		
AA	\$.25	40	$\frac{5}{8}$	$9\frac{3}{8}$	$7\frac{5}{8}$	$\frac{3}{8}$	48	43
LARGE LINCOLN TIMBERS								
A	.50	49	$\frac{3}{4}$	$12\frac{1}{2}$	$10\frac{1}{2}$	$\frac{3}{4}$	48	70
1T	1.00	77	$\frac{3}{4}$	$17\frac{3}{8}$	$12\frac{1}{2}$	$\frac{3}{4}$	24	58
2T	2.00	127	$\frac{3}{4}$	$17\frac{3}{8}$	$12\frac{1}{2}$	$1\frac{5}{8}$	12	56
3T	3.00	173	$\frac{3}{4}$	$17\frac{3}{8}$	$12\frac{1}{2}$	$2\frac{3}{8}$	6	43



Set used in this illustration is No. 3T. In it are 173 pieces which include Wheels. Many attractive models such as blockhouses, cabins, doll houses, trailers, trucks, fences and others can be built. Design Book included shows how to make them.





# JOE OTT'S *New Design* 1939 MODEL AIRPLANES



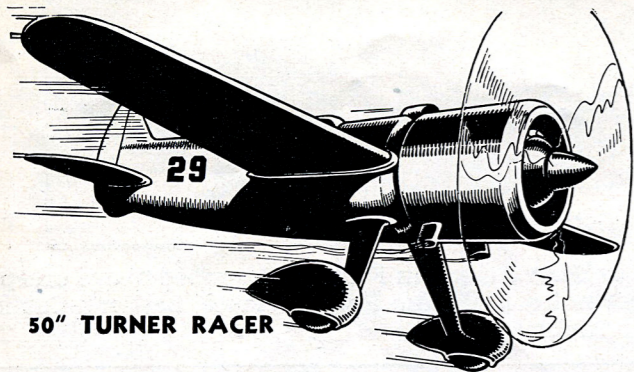
50" HOWARD DGA-11 GAS KIT . . .

## 50" WING SPAN GAS Motor Kits Complete \$2.50 LIST EACH

(Except For Motor Unit)

These Kits are complete in all respects—Full Size Joe Ott Blue Prints—Full Size Illustrated Sketches. Each piece is clearly printed on balsa for a perfect fit. Each Rib and Former is printed on plan for double checking purposes.

- No. 5001G—HOWARD DGA-11 (Factory Serial No.) LIST \$2.50
- No. 5002G—TURNER RACER LIST \$2.50
- 5000G SERIES—Standard Package, 4 Kits Assorted. Weight, 12 lbs. LIST Per Package, \$10.00



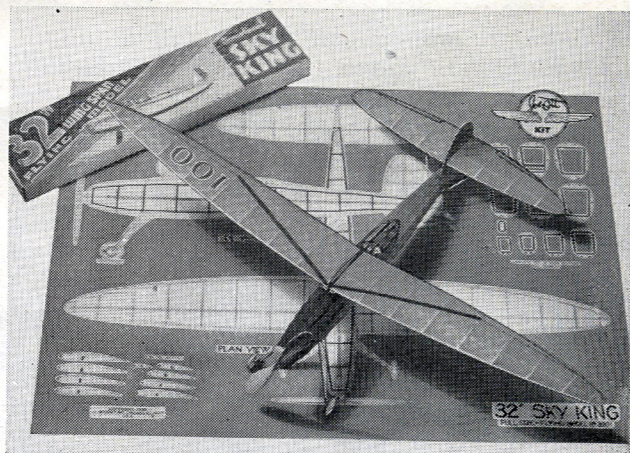
50" TURNER RACER

## Rubber Motor Kits Complete 50" WING SPAN \$1.50 LIST EACH

These Kits are complete in all respects—each Kit with Full Size 50" Joe Ott Blue Print and Full Size illustrated sketch. Each piece is clearly printed on balsa for easy cutting to a perfect fit.

- No. 5001—HOWARD DGA-11—Rubber Kit .....\$1.50
- No. 5002—TURNER RACER—Rubber Kit ..... 1.50
- 5000 SERIES—Standard Package, 4 Kits Assorted. Weight 10 lbs.....LIST per package, \$6.00

Rubber Bands & all Necessary Materials Included in each Kit



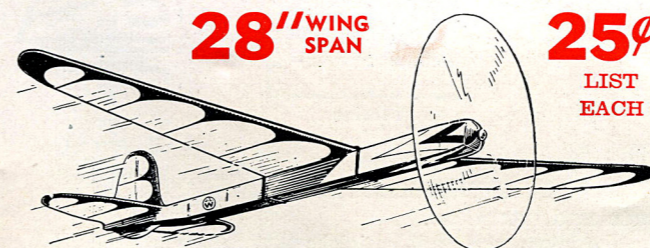
## 32" WING SPAN De Luxe Contest and Scale Flyers 50¢ LIST EACH

With New 3 View Full Size Blue Print Picture Plans and Perspective Sketches.

- No. 3201—Sky King De Luxe—Cabin Type
- No. 3202—Sea Hornet—Seaplane Type
- No. 3203—BF 109 Pursuit—Scale Type
- 3200 SERIES—Standard Package, 12 Kits Assorted. Weight 7 lbs.....LIST per Package, \$6.00

FOR 20 YEARS Joe Ott—former U. S. Army aviation instructor—has designed and built Model Airplanes. He is considered one of the country's foremost authorities on Model Airplanes and KNOWS them from nose to tail. Mr. Ott is the author of "MODEL AIRPLANES—BUILDING AND FLYING" and has written many magazine articles on this fascinating subject. Mr. Ott's practice of constantly keeping abreast of all recent developments in design and construction in the Airplane Industry makes it possible for us to reproduce in Model Airplanes all standard designs, as fast as they are proved practical and popular.

## Contest Endurance Flyers



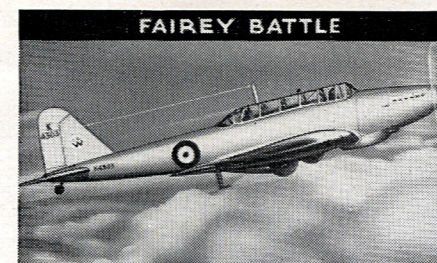
28" WING SPAN

25¢ LIST EACH

Cloud Buster

- No. 2801—Cloud Buster—Stick Type
- No. 2802—Senior Cabin—Cabin Type
- No. 2803—Albatross—Seaplane Type
- 3 View Full Size Plans and Perspective Sketches.
- 2800 SERIES—Standard Package, 36 Kits Assorted. Weight, 12 lbs.....LIST Per Package, \$9.00

## FLYING SCALE MODELS



25" WING SPAN

25¢ LIST EACH

**FAIREY BATTLE**—A model of an English War Plane using a Rolls Royce 12 Cylinder upright engine which is liquid cooled. This is one of the highest speed ships in the English Air Service. It is a two-place job, carries machine guns for self-protection and is also equipped for light bombing. Plans are 3 View and Full Size With Large Perspective Sketches Showing Step by Step Construction.

- No. 2501—Fairey Battle
- No. 2502—Rearwin Speedster
- No. 2503—1939 Fairchild
- 2500 SERIES—Standard Package, 36 Kits Assorted. Weight, 11 lbs.....LIST Per Package, \$9.00
- No. 2504—Ryan S-C (Factory Serial No.)
- No. 2505—1939 Stinson
- No. 2506—Bellanca Racer

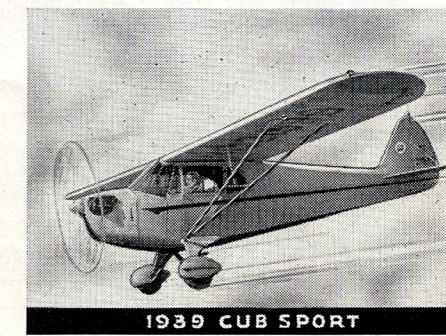
## PLANS

Are 3 View and FULL SIZE, with Large Perspective Sketches Showing Step by Step Construction.

## SCALE FLYERS

17" WING SPAN

10¢ LIST EACH



1939 CUB SPORT

Each Box Contains All Necessary Materials For Building One Complete Plane

- No. 1701—Luscombe Phantom
- No. 1702—1939 Fokker Pursuit
- No. 1703—1939 Cub "Sport"
- 1700 SERIES—Standard Package, 72 Kits Assorted. Weight, 11 lbs.....LIST Per Package, \$7.20
- No. 1704—Cessna
- No. 1705—1939 Percival Gull
- No. 1706—Loire-Nieuport 250

## SOLIDS — For Display Only. Not Intended For Flying.

8 1/2" WING SPAN

10¢ LIST EACH

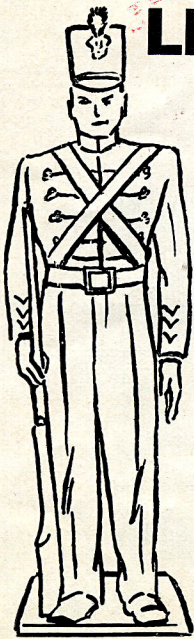


THE MAINLINER

With Black Print Picture Plans, Full Size These solid scale models are printed on heavy sheets and blocks of balsa wood and are ready to be cut into shape for easy assembly.

- No. 801—Bell Airacuda
- No. 802—The Mainliner (United Air Lines Plane)
- No. 803—Curtiss Attack
- 800 SERIES—Standard Package, 72 Kits Assorted. Weight, 11 lbs.....LIST Per Package, \$7.20
- No. 804—Sikorsky S-43 (Factory Serial No.)
- No. 805—Martin Bomber
- No. 806—Beechcraft-18

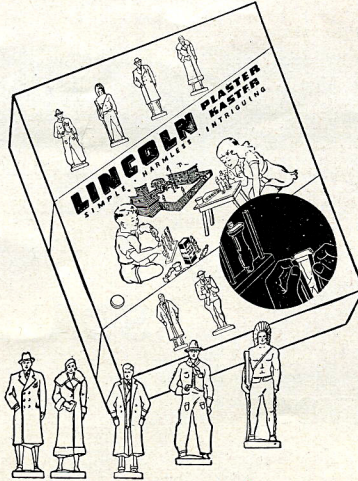
# LINCOLN PLASTER-KASTER SETS



Cadet



Aviator



Marine



Conductor



Boy

A NEW TOY designed to satisfy the desire in children to create things with their hands. LINCOLN PLASTER-KASTER SETS use no heat and are entirely safe and harmless. Plaster figures in full form, three inches high are cast quickly and neatly. They are made with the new LINCOLN SPLIT RUBBER MOLD, easily removed without breakage, leaving the figures with sharp, clear-cut details for easy painting. Sets contain five Split Rubber Figure Molds; substantial wood stand; paints; mixing bowl, spoon and plaster ready for easy mixing. Packed in a bright 4-color display box.

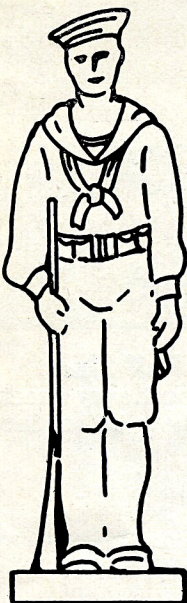
## LINCOLN PLASTER-KASTER SETS

	Our No.	Retail Price	Sets Per Carton	Shpg. Wt. Per Carton
Indian, Cowboy, Soldier, Sailor and Marine P.K.	30	1.50	12	27
Man, Woman, Young Man, Boy and Girl...P.K.	31	1.50	12	27
Engineer, Conductor, Porter, Waiter and Messenger P.K.	32	1.50	12	27
Aviator, Policeman, Fireman, Cadet, Royal Mounted Police P.K.	33	1.50	12	27

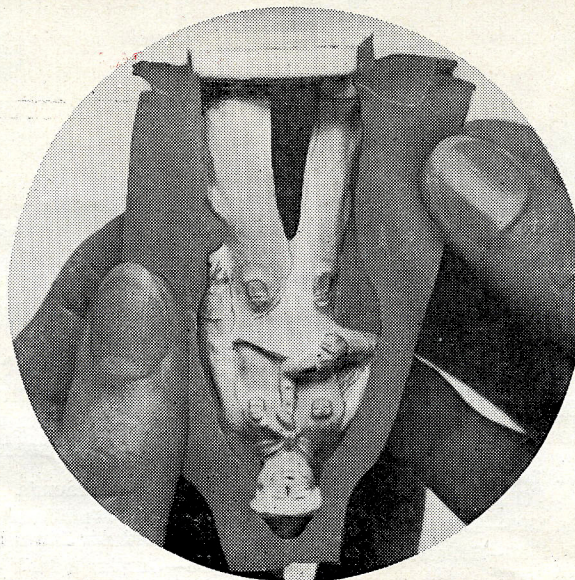


Girl

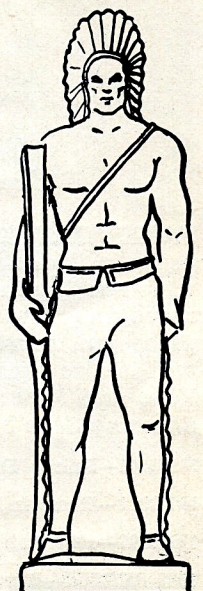
Illustrations on this page show actual sizes of molds



Sailor



REMOVING CASTING FROM SPLIT RUBBER MOLD



Indian

# LINCOLN PLASTER-KASTER SETS



## SNOW WHITE'S SEVEN DWARFS

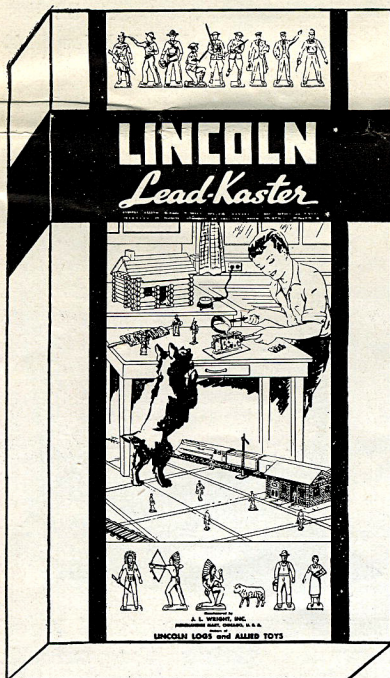
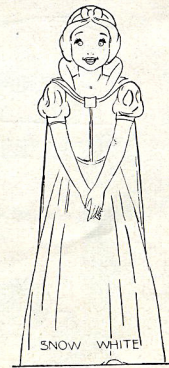
Set consists of one Heavy Rubber Mold of "Dopey," large supply of Lincolnite Molding Powder, and Substantial Wooden Stand, packed in an attractive colored box.

Our Number	Retail Price	Sets per Carton	Weight Per Carton
PKD 1	\$1.00	24	44

Heavy Rubber Molds for making the other Dwarfs retail separately at 50c each. Mold for making Snow White retails for 75c. Extra Wooden Stands, for holding molds when pouring plaster, retail for 25c each.

The Dwarfs when molded are 3¾ inches in height—Snow White about 5¾ inches.

These Plaster Castings may be beautifully Painted with Water Colors, Oils or Lacquers.



# LINCOLN LEAD-KASTER

Makes Three-dimensional Castings That are Far More Life-like Than the Thin figures Obtained From Ordinary Old Fashioned Molds.

These Sets have been carefully designed for the quick and easy casting of *FULL FORM* lead Figures under the safest possible conditions. The electrical heating unit in the larger sets melts the lead quickly without itself becoming dangerously hot. *It has been approved by The Underwriters Laboratories, Inc.*

### 4000 Series

SET CONTAINS: 1 three-figure FULL FORM mold; 2 handles; 12 pigs of lead; 1 ladle; 1 bottle of paint; 1 brush; 1 candle.

TO RETAIL AT \$2.00 EACH

### 6000 Series

SET CONTAINS: 1 three-figure FULL FORM Mold; 2 handles; 12 pigs of lead; 1 ladle; 1 bottle of paint; 1 brush; 1 candle; 1 Electric Heating Unit.

TO RETAIL AT \$3.00 EACH

### 8000 Series

SET CONTAINS: 1 three-figure FULL FORM mold; 2 handles; 24 pigs of lead; 1 ladle; 1 bottle of paint; 1 brush; 1 candle; 1 Electric Heating Unit.

TO RETAIL AT \$4.00 EACH

With any of the foregoing, we can supply the following three-figure molds:

- No. 01—Mold casts 1 Pioneer and 2 Cowboys
- No. 02—Mold casts 3 U. S. Soldiers of 1918 (Kneeling, Marching, Charging)
- No. 03—Mold casts 3 Indians (1 with gun, 1 with bow, 1 kneeling)
- No. 04—Mold casts 3 Train Figures (Conductor, Engineer and Traveling Man)
- No. 05—Mold casts 3 Farm Figures (Farmer, Farmer's Wife and Sheep).

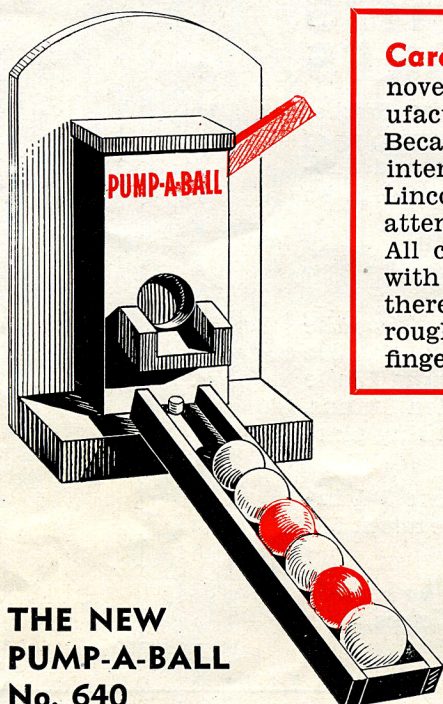
We also make *single-figure* FULL FORM molds which may be obtained in sets retailing for \$1.00 and \$2.00.

For those who prefer the *flat* molds, we have sets containing three-figure molds retailing at \$1.50 per set. Full particulars will be gladly furnished on request.

### LINCOLN LEAD-KASTER SETS

	Retail Price	Sets Per Carton	Weight Per Carton
4001 to 4005 inc.....	2.00	12	39 lbs.
6001 to 6005 inc.....	3.00	6	26 lbs.
8001 to 8005 inc.....	4.00	6	33 lbs.

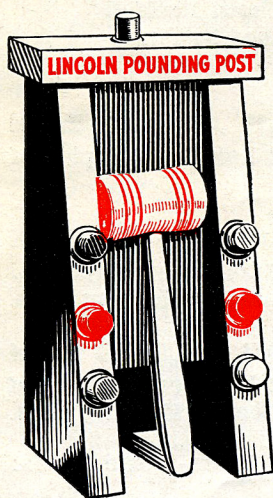
# LINCOLN PRE-SCHOOL TOYS



**THE NEW  
PUMP-A-BALL  
No. 640**

To hold a child's attention, good toys should have color, action and sound. Pump-A-Ball offers each of these features. It is finished in colorful lacquer. Continuous action is afforded by repeatedly pumping the bright balls out of the spout and into the trough. The sound of the balls falling as they are pumped out into the trough creates the 'sound' interest which is increased with their being returned to the pump. Height 9 inches. Packed 24 to a shipping carton; weight, 37 lbs.

Retail Price \$1.00



**LINCOLN POUNDING  
POST No. 620**

To satisfy a child's desire to pound, he should be given material which is entirely harmless, yet allows him to give free vent to his natural wish. This toy consists of a substantial pounding post, eight large colored pegs and a sturdy bright red wood mallet with yellow handle. Pegs are pounded into the top of the post, one after another, and as one is driven in, another pops out at the bottom. Base is 4" x 4½"; Top 2" x 5¼"; Height, 9½".

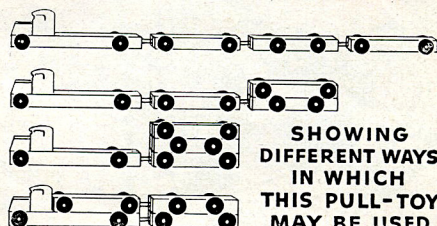
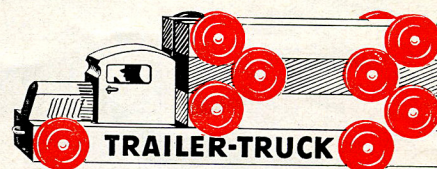
Packed 24 to a carton; weight per carton 52 lbs.

Retail Price \$1.00

## PRICES AND SPECIFICATIONS

Cat. No.	Sets Per Price	Per Ctn.	Wt. Per Ctn.
LINCOLN BUILDING BLOCKS .....601	\$1.00	12	52 lbs.
LINCOLN BUILDING BLOCKS.....602	2.00	6	52 lbs.
LINCOLN POUNDING POST .....620	1.00	24	52 lbs.
LINCOLN TRAILER TRUCK.....630	1.00	24	32 lbs.
LINCOLN PUMP-A-BALL .....640	1.00	24	37 lbs.

**Carefully selected Toys,** novel in design, properly manufactured and correctly priced. Because of the natural child interest which they possess, Lincoln Pre-School Toys offer attention holding play value. All colored parts are finished with harmless lacquer and there are no sharp corners or rough edges to injure little fingers.

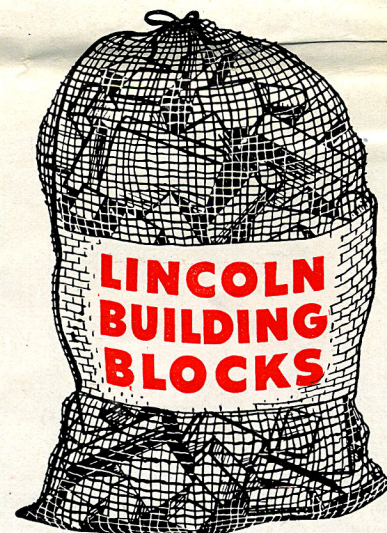


SHOWING  
DIFFERENT WAYS  
IN WHICH  
THIS PULL-TOY  
MAY BE USED

**LINCOLN TRAILER TRUCK No. 630**

A unique presentation of the ever popular truck idea combined with flat cars which may be arranged in a number of interesting ways. Children will enjoy spreading the caravan out to its full length, piling small objects on the flat cars, and pushing or pulling it around. A child will be beneficially amused in determining the various ways in which the flat cars may be stacked up. A cord may be attached to the front of the Trailer Truck making it a pull-toy. Length folded, 9¾ inches; length extended, 29 inches. Packed 24 to a shipping carton; weight, 32 lbs.

Retail Price \$1.00



**LINCOLN  
BUILDING  
BLOCKS  
No. 601**

A set of 60 hardwood Building Blocks, *Natural Wood Finish*, tumbled and waxed giving the smooth surface which is so essential in toys to be handled by small children. Set contains eleven different shapes in sufficient quantities to permit building elaborate as well as simple structures. A substantial net bag serves as a convenient and durable container for the blocks. Packed 12 to a shipping carton. Weight per carton 52 lbs.

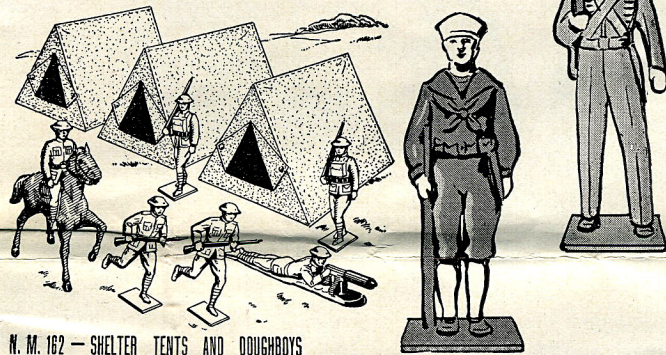
Retail Price \$1.00

**LINCOLN BUILDING BLOCKS—No. 602**

This set is similar to the above No. 601 except that it contains 120 blocks (twice as many of each kind). Packed 6 to a shipping carton. Weight per carton 52 lbs.

Retail Price \$2.00

# LINCOLN LOG PRACTICALLY UNBREAKABLE METAL FIGURES



N. M. 162 - SHELTER TENTS AND DOUGHBOYS

LINCOLN LOG FIGURES shown on this page are just the right size to be used with LINCOLN LOG CABINS, TRAINS, and other Toys. The foot Figures are 2 1/8 inches in height; mounted Figures are in proportion. All are beautifully enameled in attractive colors.

**SNOW WHITE AND THE 7 DWARFS**  
Cast in Practically Unbreakable Metal and Beautifully Enameled. The Dwarfs are about 3 3/4 inches in Height. Snow White is about 6 inches High.



Snow White and the 7 Dwarfs are made in the same strong metal that is used for LINCOLN LOG Soldiers, Cowboys, Indians and other Figures. They are beautifully enameled in bright, durable colors.

- No. 75. Seven Dwarfs in attractive box, Weight 2 lbs.,  
TO RETAIL AT ..... \$2.00
- No. 76. Snow White, Boxed separately, Weight 1/2 lb.,  
TO RETAIL AT ..... 50c
- Dwarfs may also be purchased in bulk.

## Sets To Retail at FIFTY CENTS

- NM- 50—Indians, 1 mounted, four on foot, and 1 crawling.
- NM- 53—Cowboys Shooting, 1 mounted and 5 on foot.
- NM- 54—Cowboys with Rope, 1 mounted and 5 on foot.
- NM- 55—Cowboys and Indians, 4 Cowboys, 3 Indians.
- NM- 56—Indians and Pioneers, 2 Pioneers, 5 Indians.
- NM- 57—Soldiers of 1812, 6 on foot.
- NM- 58—Soldiers of 1776, 1 mounted, four on foot.
- NM- 60—U. S. Soldiers of 1918, 1 mounted, 2 marching, 2 charging, 1 Machine Gunner.
- NM- 62—Machine Gunners, 7 shooting.
- NM- 63—American Sailors, 7 at attention.
- NM- 64—West Point Cadets, 7 marching.
- NM- 65—Royal Canadian Police, 1 mounted, 4 on foot.
- NM- 70—Farm Set, 1 Farmer, 1 Sheep, 1 Horse, 1 Cow, 2 Pigs.
- NM- 80—Lincoln Station Figures, 2 Passengers, 1 Messenger, 1 Policeman, 1 Conductor, 1 Red-cap, 1 Engineer.

## Sets To Retail at ONE DOLLAR

- NM-100—Indians, 2 mounted, 8 on foot, 2 crawling.
- NM-101—Indians and Pioneers, 10 Indians, 4 Pioneers.
- NM-102—Cowboys, 2 mounted, 5 with rope, 5 shooting.
- NM-105—Cowboys and Indians, 1 Cowboy mounted, 5 Cowboys shooting, 1 Indian mounted, 4 Indians on foot, 1 Indian crawling.
- NM-110—U. S. Soldiers of 1918, 2 mounted, 4 marching, 4 charging, 2 machine gunners.
- NM-140—Farm Set with Trees, 2 Trees, 2 Sheep, 4 Pigs, 1 Man, 1 Woman, 1 Horse, 1 Cow.
- NM-160—Trenches and Doughboys, 3 sections cardboard Trench, 2 Soldiers marching, 2 Soldiers charging, 3 Machine Gunners.
- NM-161—Tpees and Indians, 2 cloth Tents with poles, 1 Indian mounted, 4 Indians on foot, 1 Indian crawling.
- NM-162—Shelter Tents and Doughboys, 3 khaki Tents, 1 U. S. Soldier mounted, 2 Soldiers marching, 2 Soldiers charging, 1 Machine Gunner.

## U. S. SOLDIERS OF 1918—4" IN HEIGHT

- NM-200—4 marching, 1 standing, 1 kneeling, 1 Flag Bearer.
- NM-201—1 standing, 2 kneeling, 2 Signalmen, 1 Machine Gunner, 1 Aviator.

PACKING SPECIFICATIONS	Retail Price	Sets Per Carton	Weight Per Carton
NM- 50 to 80 inc.	\$ .50	48	34 Lbs
NM-100 to 162 inc.	1.00	24	34 Lbs.
NM-200 and 201	1.00	24	45 Lbs.



This attractive Display, and other Dealer Helps have been designed to assist you in your Sales of LINCOLN LOGS and ALLIED TOYS.

Write us for detailed information as to how you can secure, FREE OF CHARGE, the above and other Displays.

*Manufactured by:*

**J. L. WRIGHT, INC., 1443 Merchandise Mart, CHICAGO, ILLINOIS**

**A. H. Holtermann**  
*Pacific Coast Representative*  
 905 Mission Street, San Francisco, Calif.

**E. Roy Clarke**  
*Canadian Representative*  
 14 McCaul Street, Toronto, Canada.

**J. Warren Wiley**  
*Eastern Representative*  
 200 Fifth Avenue, New York, N. Y.

**C. W. Schaefer**  
*Southern Representative*  
 1105 Jackson St., Lynchburg, Va.