

# 1940 LARGE LINCOLN LOG AND TIMBER DESIGN BOOK

For 3/4-in. Logs and Timbers

9 3/4 in. wide by 13 in. tall

4 Numbered Pages

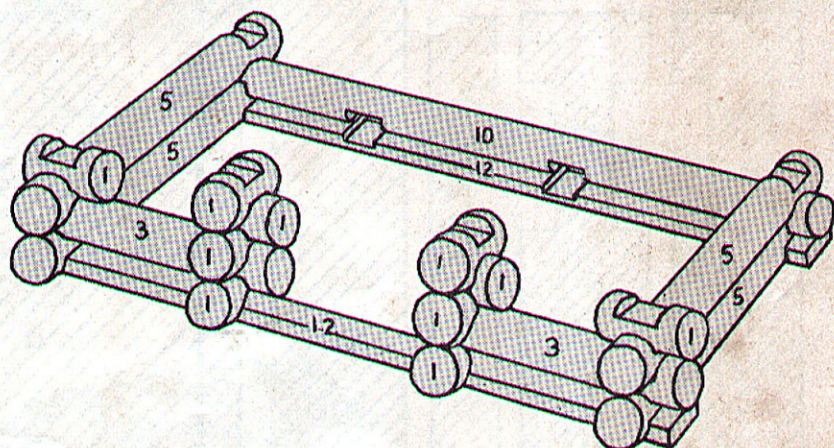
# ONLY LINCOLN LOGS AND TIMBERS HAVE THESE EXCLUSIVE AND PATENTED FEATURES

DESIGN BOOK COPYRIGHT-1940

J. L. WRIGHT, INC.

NAME REGISTERED AUGUST 28, 1923

U. S. PATENTS 1,351,086 AND 2,012,160



## ★ LINCOLN LOG FOUNDATION PLAN SHOWN ABOVE

### How to Start Your Building

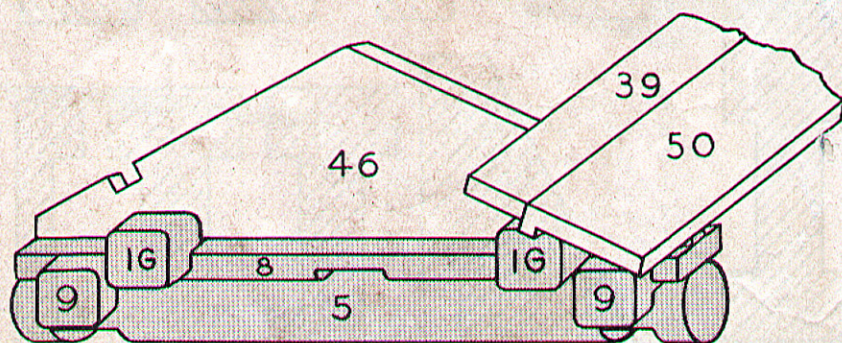
1st. Pick out the half Logs No. 12. Flat side down, notched side up, these half Logs are used to form the front and back of the base of the building.

2nd. Connect the ends of the half Logs with two No. 5 Logs.

3rd. Lay a No. 10 Log over No. 12 at the rear.

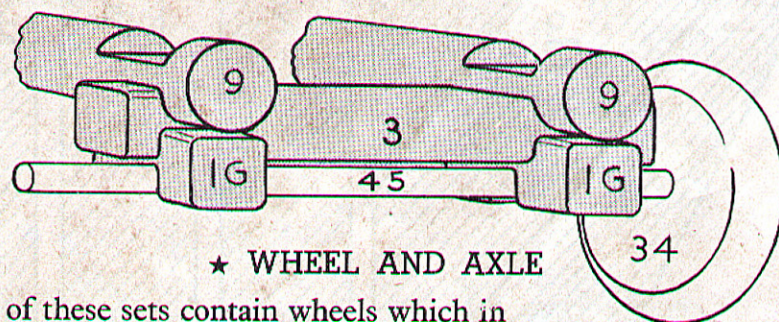
4th. Place a No. 1 Log in each of the middle notches of No. 12 at the front and connect them with the No. 5 Logs by two No. 3 Logs.

5th. Follow the numbers shown in the diagram; then read about the other construction features illustrated on this Page and you will be ready to build the structures shown on Pages 3 and 4. Before long you will be designing your own buildings. Rubber bands may be used to hold them together, if desired.



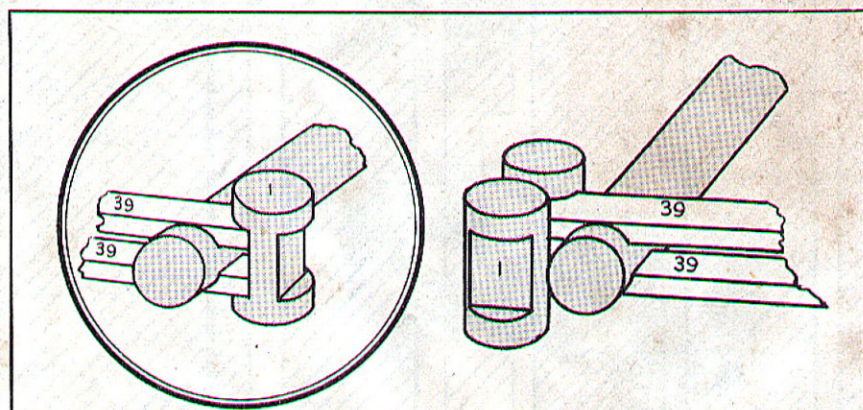
## ★ GABLE AND ROOF CONSTRUCTION

The new Lincoln Log Gable and Roof is illustrated above. When the sides and ends of your building have reached the desired height, place a No. 8 Timber on the uppermost Logs at each end of the building to receive two No. 1G Logs which hold the gable in position. Then place the wide roof planks No. 50 on the lower corners of the gable with the projection on the plank fitting in the notch on the gable. Place narrow roof planks, No. 39 above them on the gables to complete the roof.



## ★ WHEEL AND AXLE

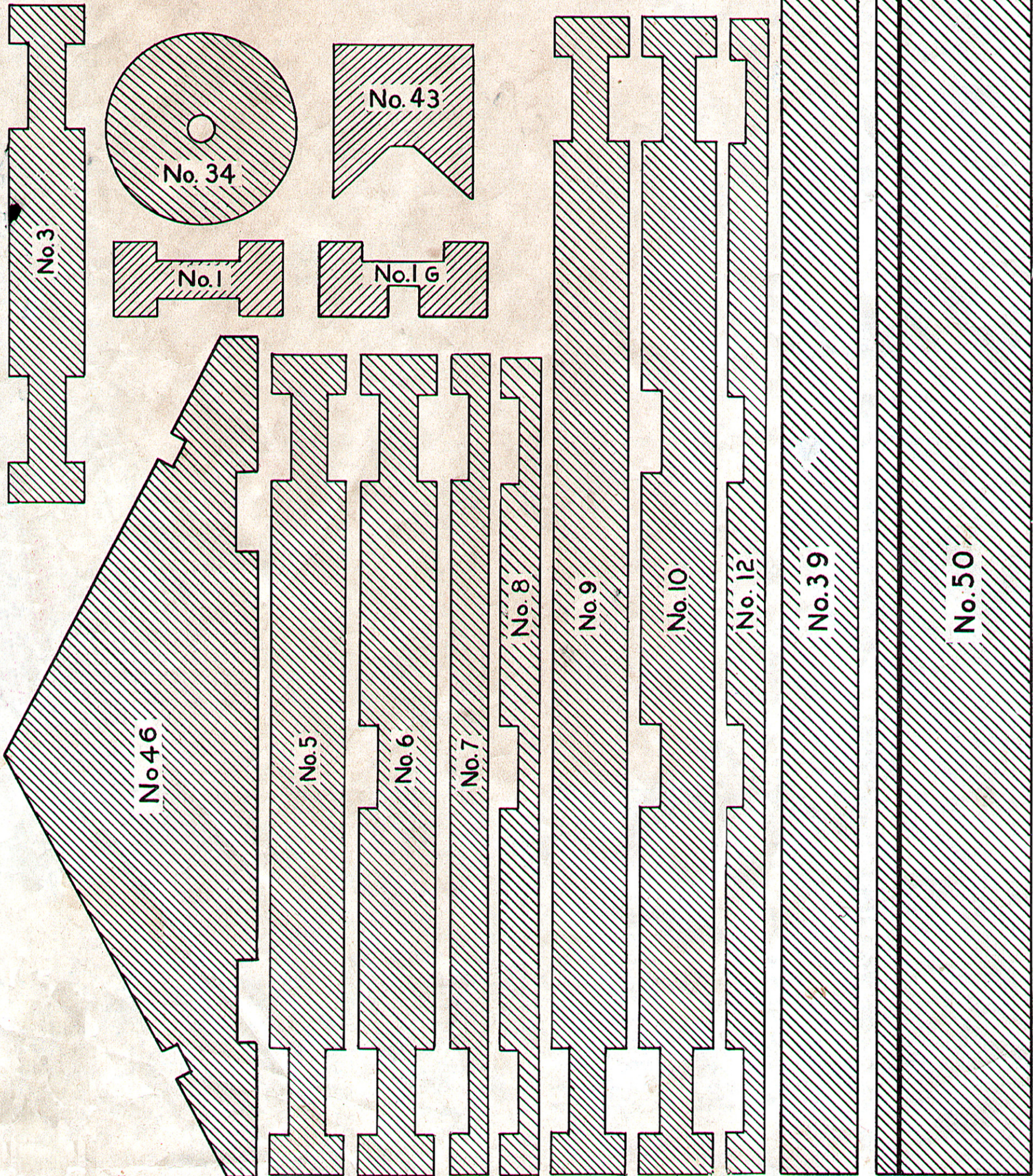
All of these sets contain wheels which in the early days were made from cross sections of Logs. Among the first things made with wheels were the wheelbarrow, hand truck and the ox cart. Later on man designed the wagon and the automobile. Two grooved Logs No. 1G are used as bearings for the axle, No. 45, on the ends of which are placed the wheels, No. 34. These wheels are held securely to the axle by friction while the axle turns freely in the groove. A No. 3 Log is placed parallel to the axle in the notches of the No. 1G Logs, and longer Logs are then placed in the notches of the No. 3 Logs to form the chassis on which the desired body may be constructed.



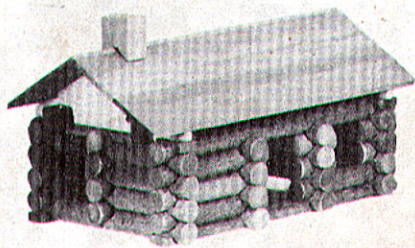
★ A NEW DEVELOPMENT IN LINCOLN LOG CONSTRUCTION is the use of the narrow roof planks No. 39 as beams or girders by placing two of the planks in the opposite notches of a Log, as shown in the above illustrations, and locking the ends together with No. 1 or other Logs. The planks and Logs thus locked together may be placed either vertically or horizontally to build towers, bridges, fences, platforms, etc., as illustrated within. When both ends of a pair of planks are thus locked together, the elasticity of the planks provides enough tension to hold the pieces securely.

# DIAGRAM OF PIECES—Actual Size

Because of lack of space, the following pieces are not illustrated: Nos. 14 and 15, the same length as No. 9, but having more notches; No. 22, the longest Timber with six pairs of notches; No. 41 and 51, the longest roof planks; No. 45, the axle; and No. 47, the long gable, same length as No. 9 Log.



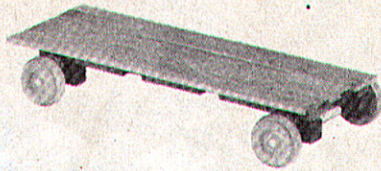
# These Structures Can Be Made with Either the 1L or the 1T Set



FRONT

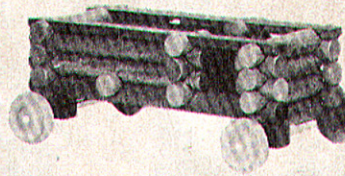
### PIONEER CABIN

No. 1G.. 4	No. 10... 2
No. 1...33	No. 12... 2
No. 3...10	No. 39... 8
No. 5... 3	No. 43... 1
No. 6... 2	No. 46... 2
No. 8... 2	No. 50... 2



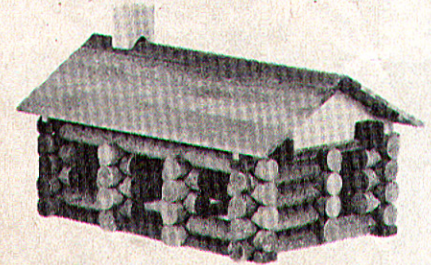
### FLAT WAGON

No. 1G.. 4	No. 34... 4
No. 12... 2	No. 39... 6
No. 45... 2	



### MILK TRUCK

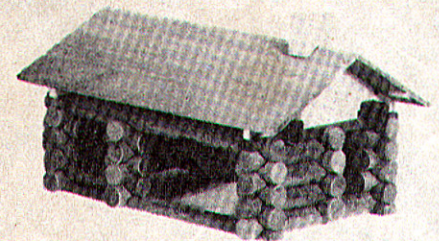
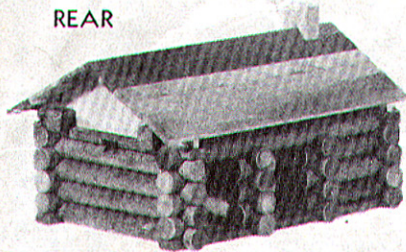
No. 1G.. 4	No. 6... 2
No. 1...12	No. 10... 2
No. 3... 8	No. 12... 2
No. 5... 2	No. 34... 4
No. 45... 2	



STORE

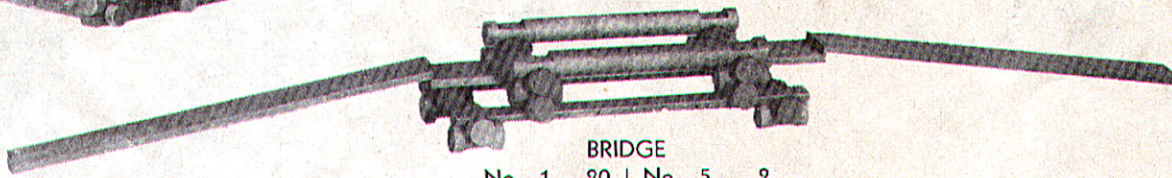
No. 1G.. 4	No. 10... 2
No. 1...31	No. 12... 2
No. 3...10	No. 39... 8
No. 5... 3	No. 43... 1
No. 6... 2	No. 46... 2
No. 8... 2	No. 50... 2

REAR



GARAGE

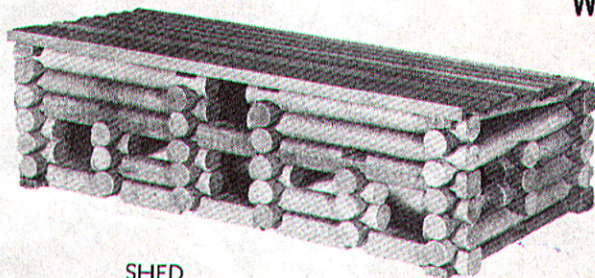
No. 1G.. 4	No. 10... 2
No. 1...26	No. 12... 2
No. 3...10	No. 39... 8
No. 5... 3	No. 43... 1
No. 6... 2	No. 46... 2
No. 8... 2	No. 50... 2



BRIDGE

No. 1...20	No. 5... 2
No. 3... 2	No. 12... 2
No. 39... 6	

# These Structures, Together with Those Shown Above, and Many Others Can Be Made with Either the 2L or the 2T Set



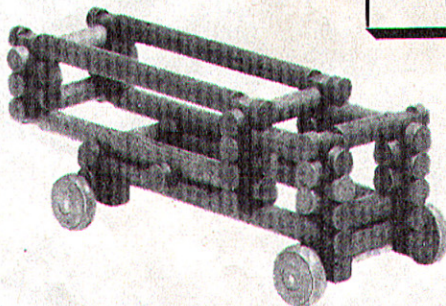
SHED

No. 1...47	No. 8... 3
No. 3... 4	No. 9... 2
No. 5... 8	No. 10... 1
No. 6... 2	No. 22... 4
No. 7... 1	No. 41... 8
No. 51... 1	

### CONTENTS OF 2L and 2T SETS

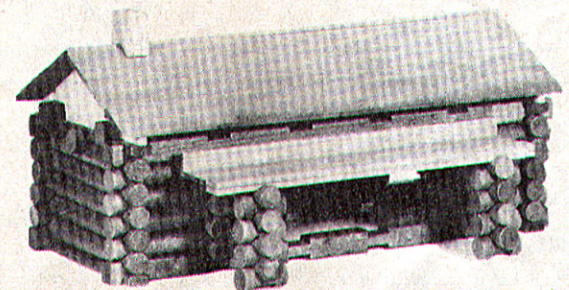
No. 1G... 4	No. 22... 4
No. 1...56	No. 34... 4
No. 3...10	No. 39... 8
No. 5... 9	No. 41... 8
No. 6... 2	No. 43... 2
No. 7... 1	No. 45... 2
No. 8... 3	No. 46... 2
No. 9... 2	No. 50... 2
No. 10... 4	No. 51... 2
No. 12... 2	

Total of 127 pieces



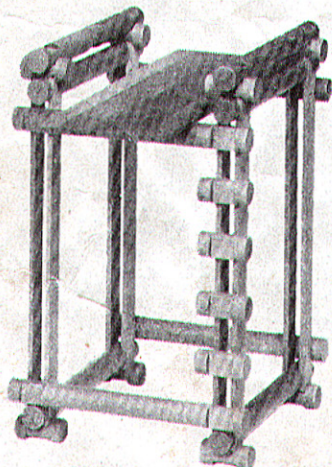
### CIRCUS WAGON

No. 1G.. 4	No. 9... 2
No. 1...23	No. 10... 4
No. 3...10	No. 34... 4
No. 45... 2	



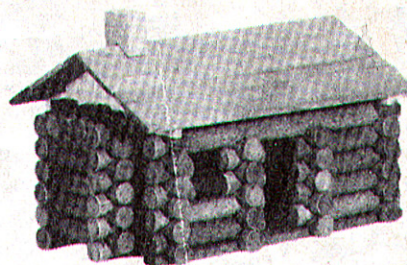
RANCH HOUSE

No. 1G.. 4	No. 7... 1	No. 39... 5
No. 1...46	No. 8... 3	No. 41... 8
No. 3...10	No. 9... 1	No. 43... 1
No. 5... 8	No. 10... 1	No. 46... 2
No. 6... 2	No. 22... 4	No. 51... 2



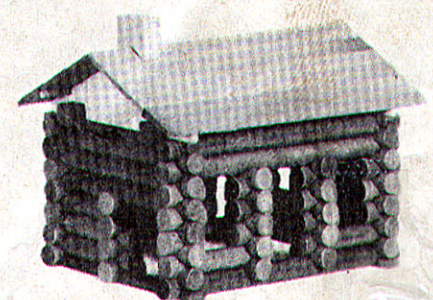
### DIVING PLATFORM

No. 1...16	No. 6... 2
No. 5... 8	No. 39... 4
No. 41... 8	



LINCOLN CABIN

No. 1G.. 4	No. 6... 2	No. 39... 8
No. 1...49	No. 8... 2	No. 43... 1
No. 3...10	No. 10... 2	No. 46... 2
No. 5... 9	No. 12... 2	No. 50... 2

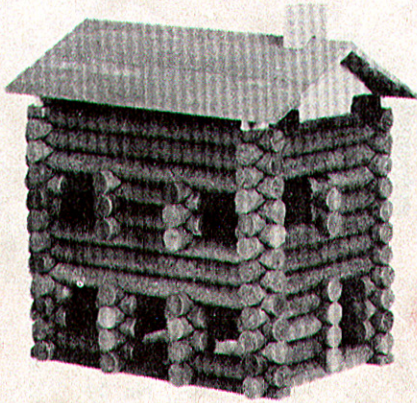


SCHOOL HOUSE

No. 1G.. 4	No. 6... 2	No. 39... 8
No. 1...47	No. 7... 1	No. 43... 1
No. 3... 9	No. 8... 3	No. 46... 2
No. 5... 7	No. 9... 2	No. 50... 2
No. 10... 4		

This is a copy of the Log Cabin near Hodgenville, Kentucky in which Abraham Lincoln was born on February 12, 1809.

# These Structures, Together with Those Shown on Page 3, Can Be Made with the 3L or the 3T Set



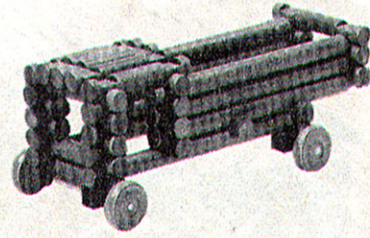
**TWO STORY DWELLING**

No. 1G.. 4	No. 10... 4
No. 1... 47	No. 12... 2
No. 3... 13	No. 14... 1
No. 5... 15	No. 15... 2
No. 6... 3	No. 39... 8
No. 7... 1	No. 43... 1
No. 8... 1	No. 46... 2
No. 9... 7	No. 50... 2

**CONTENTS OF 3L and 3T SETS**

No. 1G.... 4	No. 9..... 7	No. 39..... 8
No. 1.....77	No. 10..... 4	No. 41..... 8
No. 3.....14	No. 12..... 2	No. 43..... 2
No. 5.....16	No. 14..... 4	No. 45..... 2
No. 6..... 3	No. 15..... 2	No. 46..... 2
No. 7..... 1	No. 22..... 6	No. 50..... 2
No. 8..... 3	No. 34..... 4	No. 51..... 2

**Total of 173 pieces**

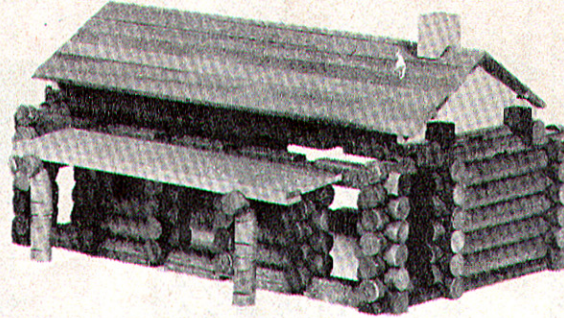
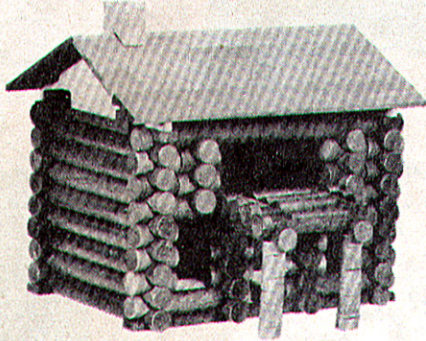


**COAL TRUCK**

No. 1G.. 4	No. 9... 4
No. 1... 20	No. 10... 4
No. 3... 13	No. 34... 4
	No. 45... 2

**MEETING HOUSE**

No. 1G.. 4	No. 10... 4
No. 1... 43	No. 12... 2
No. 3... 8	No. 14... 1
No. 5... 16	No. 39... 8
No. 7... 1	No. 43... 1
No. 8... 1	No. 46... 2
No. 9... 5	No. 50... 2

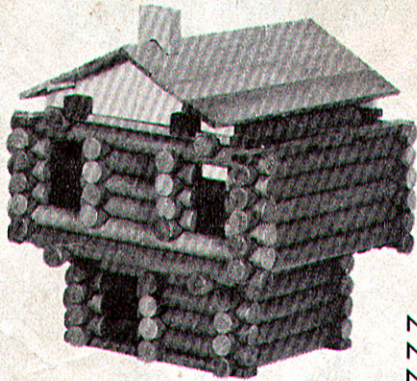
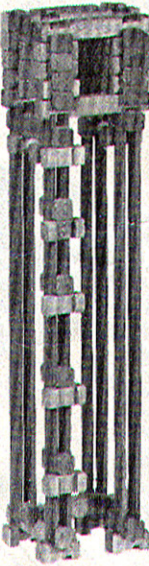


**RAILWAY STATION**

No. 1G.. 4	No. 8... 1	No. 39... 8
No. 1... 68	No. 12... 2	No. 41... 8
No. 3... 10	No. 15... 2	No. 43... 1
No. 5... 14	No. 22... 6	No. 46... 2
No. 7... 1		No. 51... 2

**LOOKOUT TOWER**

No. 1... 41
No. 3... 14
No. 41... 8



**BLOCK HOUSE**

No. 1G.. 4	No. 9... 7
No. 1... 42	No. 10... 4
No. 3... 9	No. 14... 4
No. 5... 16	No. 15... 2
No. 6... 3	No. 39... 8
No. 7... 1	No. 43... 1
No. 8... 1	No. 46... 2
	No. 50... 2

These Structures, together with all the others shown in the Design Book can be made with the De Luxe 5LTF Set, which Consists of Large Logs, Timbers and Metal Figures.

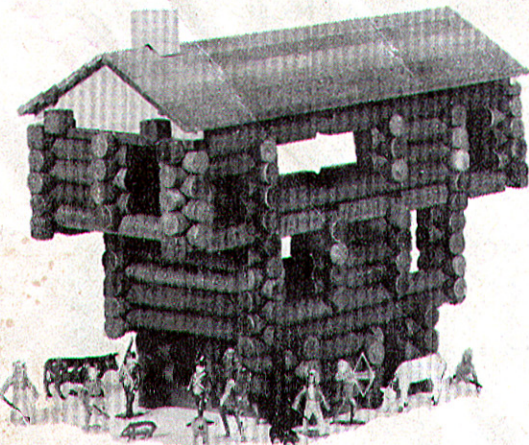
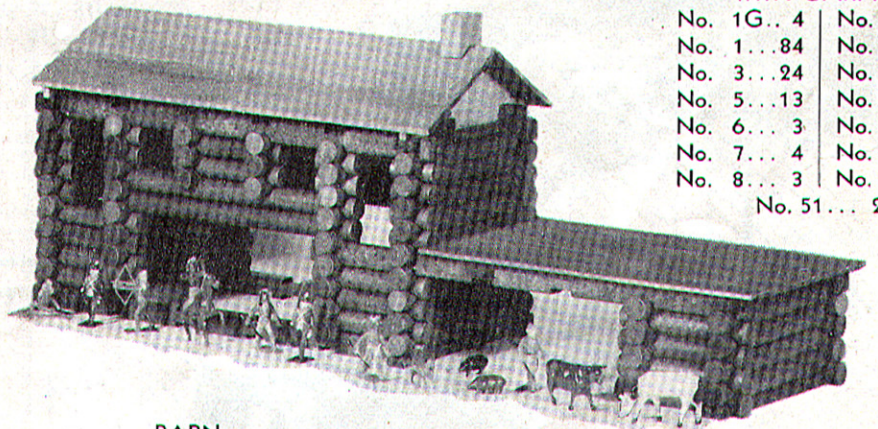
**CONTENTS OF DE LUXE 5LTF SET**

No. 1G... 8	No. 8..... 4	No. 15..... 2	No. 43..... 2
No. 1... 103	No. 9..... 7	No. 22..... 6	No. 45..... 2
No. 3... 24	No. 10..... 6	No. 34..... 4	No. 46..... 2
No. 5... 15	No. 12..... 4	No. 39..... 8	No. 47..... 2
No. 6... 4	No. 14..... 4	No. 41..... 12	No. 50..... 2
No. 7... 4		No. 51..... 2	

Total of 227 pieces, 13 Figures and 1 Mesh Bag

**TWO STORY BLDG. WITH GARAGE**

No. 1G.. 4	No. 9... 5
No. 1... 84	No. 10... 1
No. 3... 24	No. 22... 6
No. 5... 13	No. 39... 8
No. 6... 3	No. 41... 8
No. 7... 4	No. 43... 1
No. 8... 3	No. 46... 2
	No. 51... 2

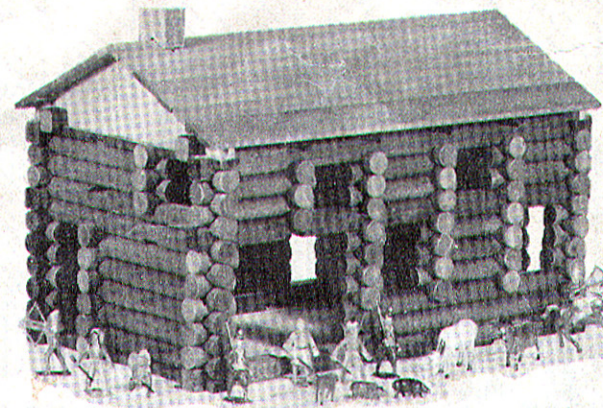


**THREE STORY BLOCK HOUSE**

No. 1G.. 4	No. 9... 3
No. 1... 81	No. 10... 4
No. 3... 9	No. 14... 2
No. 5... 15	No. 22... 4
No. 6... 4	No. 41... 8
No. 7... 1	No. 43... 1
No. 8... 3	No. 46... 2
	No. 51... 2

**BARN**

No. 1G.. 4	No. 12... 4
No. 1... 89	No. 15... 1
No. 3... 20	No. 22... 6
No. 5... 12	No. 41... 8
No. 6... 2	No. 43... 1
No. 9... 2	No. 47... 2
No. 10... 6	No. 51... 2



Complete catalog of LINCOLN LOGS and ALLIED TOYS will be gladly furnished on request  
J. L. WRIGHT, INC., Merchandise Mart, Chicago, Illinois