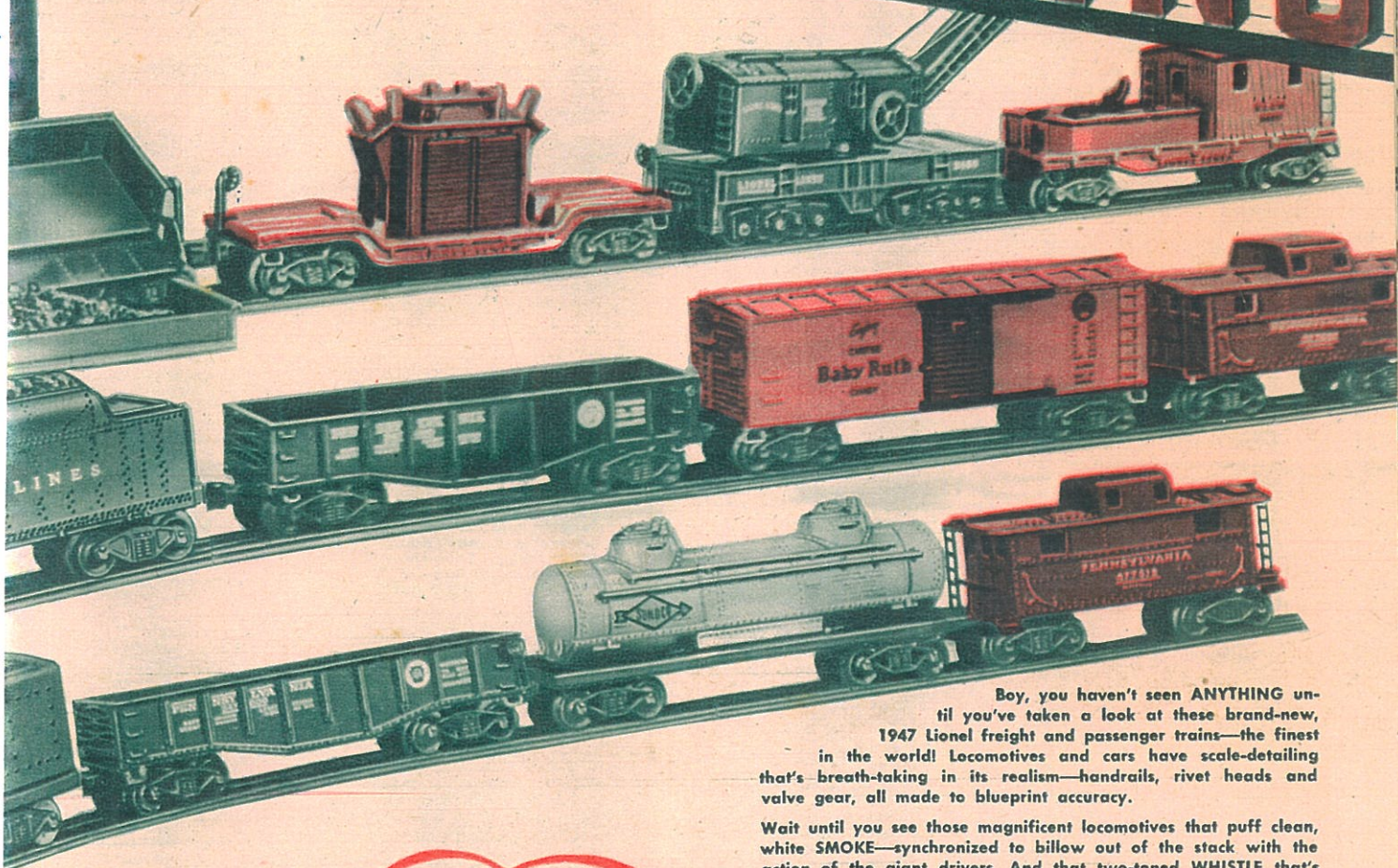


all boys!

LIONEL TRAINS



Boy, you haven't seen ANYTHING until you've taken a look at these brand-new, 1947 Lionel freight and passenger trains—the finest in the world! Locomotives and cars have scale-detailing that's breath-taking in its realism—handrails, rivet heads and valve gear, all made to blueprint accuracy.

Wait until you see those magnificent locomotives that puff clean, white SMOKE—synchronized to billow out of the stack with the action of the giant drivers. And that two-toned WHISTLE that's made Lionel locos famous the world over is just like the real thing! Yes, sir, there's a new thrill in store for you when you highball one of these extraordinary Lionel trains along the pike, whistle blowing and smoke streaming out of the stack! You'll agree there's no fun in the world like model railroading—the LIONEL way!

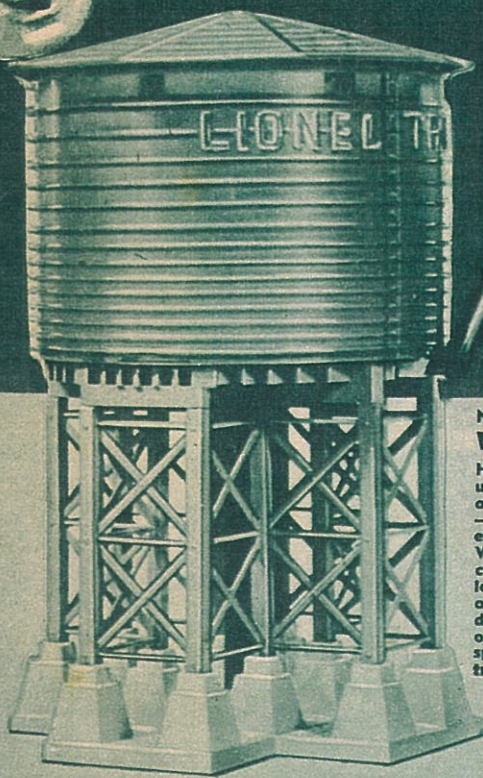
**WATCH 'EM
PUFF REAL
SMOKE!**

**HEAR 'EM
ACTUALLY
WHISTLE!**

EIGHT

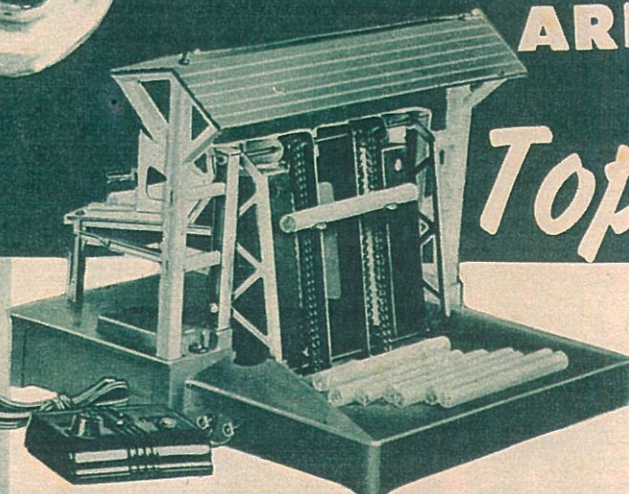
1 No.
1654W
Gondola
—1 No.
ns No.
section
—1 No.
ack Set
1042
27.50
1431W,
tle and
mer.
22.50

LIONEL TRAIN ACCESSORIES ARE *Tops*



**NO. 38
WATER TOWER**

Here's one of the most unusual model railroad accessories ever made—and it's fully operated by remote control! When you press the control button, spout lowers over loco tender and water level in tank drops, creating illusion of water flowing from spout! Tank is made of translucent polystyrene. **\$13.95**



NO. 164 LOG LOADER

This realistic Log Loader will make your freight yards a beehive of activity. Hooks on revolving, endless chain carry the logs to the elevated loading platform. When control button is pressed, logs tumble into waiting car. 9" high, 11 1/4" wide, 10 3/4" long. Logs included. **\$18.95**

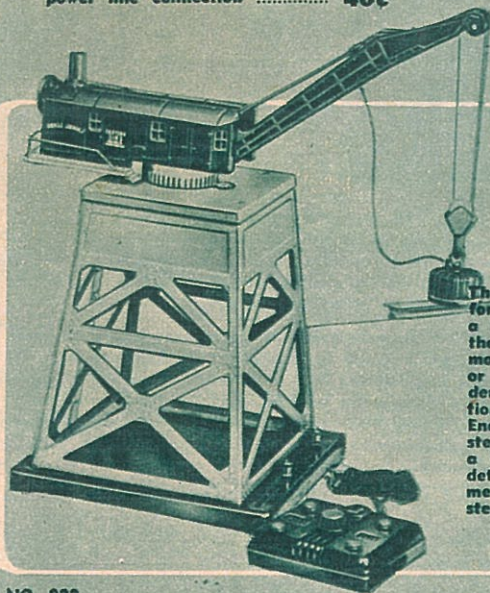
CTC LOCKON

An indispensable part of your track layout. This lockon can be clamped to the track in order to provide a perfect power line connection. **40¢**



**NO. 152
CROSSING GATE**

When train approaches the crossing, red warning light flashes on and gate lowers automatically stopping highway traffic. When last car passes, light is extinguished and gate rises. 10 1/2" long. Contactor, bulb and wires included. **\$4.50**

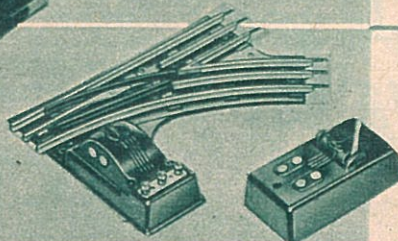


**NO. 182
MAGNETIC CRANE**

This exciting model will perform all of the operations of a real crane—at a touch of the buttons. Remote control motor supplies winch to raise or lower block and tackle; derrick revolves in either direction in a full 360° circle. Energized magnet picks up steel scrap and unloads it into a waiting car. Cab is super-detailed. Height is 10". Base measures 6" x 6 1/2". Bin and steel scrap included. **\$22.50**

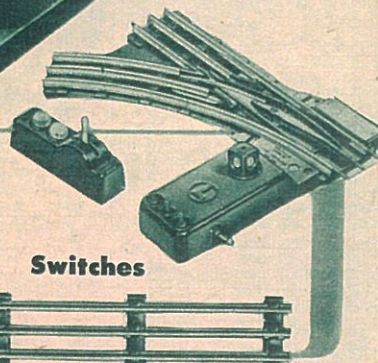
**NO. 022
'O' GAUGE SWITCHES**

These remote control switches are equipped with a Lionel exclusive Non-Derailling device which automatically throws swivel rail on open switches, thus preventing accidents. Intricately molded bakelite base supports rails. Per pair (one left, and one right-hand switch). **\$16.75**



**NO. 1121
'027' Gauge**

With each of these Remote Control switches a cleverly designed mechanism containing red-and-green colored lights indicates position of the swivel rail. Switch controller has a corresponding set of lights which indicates position even though switch may not be visible to operator. Price (includes one right-hand and one left-hand switch): **\$10.95**



Switches



**'027' GAUGE
CURVED TRACK**

NO. 1013
Running rails of each track section are made with double flanges to insure long life and help guard against warping. Ties are oxidized black to give them a real railroad appearance. Curved track measures 9 1/2". **25¢**

Each section of '027' track is insulated and put through a series of flaw-finding tests. Three steel pins at one end of section insure perfect current connection and tight fit. Track measures 8 7/8". **25¢**

**NO. 1018
'027' GAUGE
STRAIGHT TRACK**

Billy and Ruth say "NOTHING LIKE LIONEL"

FOR A MERRY CHRISTMAS



AND HAPPY HOBBIES!

CHALK & SLATE SET

Use chalk on the real slate board, then turn it over and use crayon on the white composition back. Make all sorts of designs, erase them and start over when the slate is filled. Lots of fun for kiddies. The set includes chalk, crayons, large felt eraser, stencils, cut outs, one ABC chart and plenty of white paper for drawing.

ASK FOR 23BR1

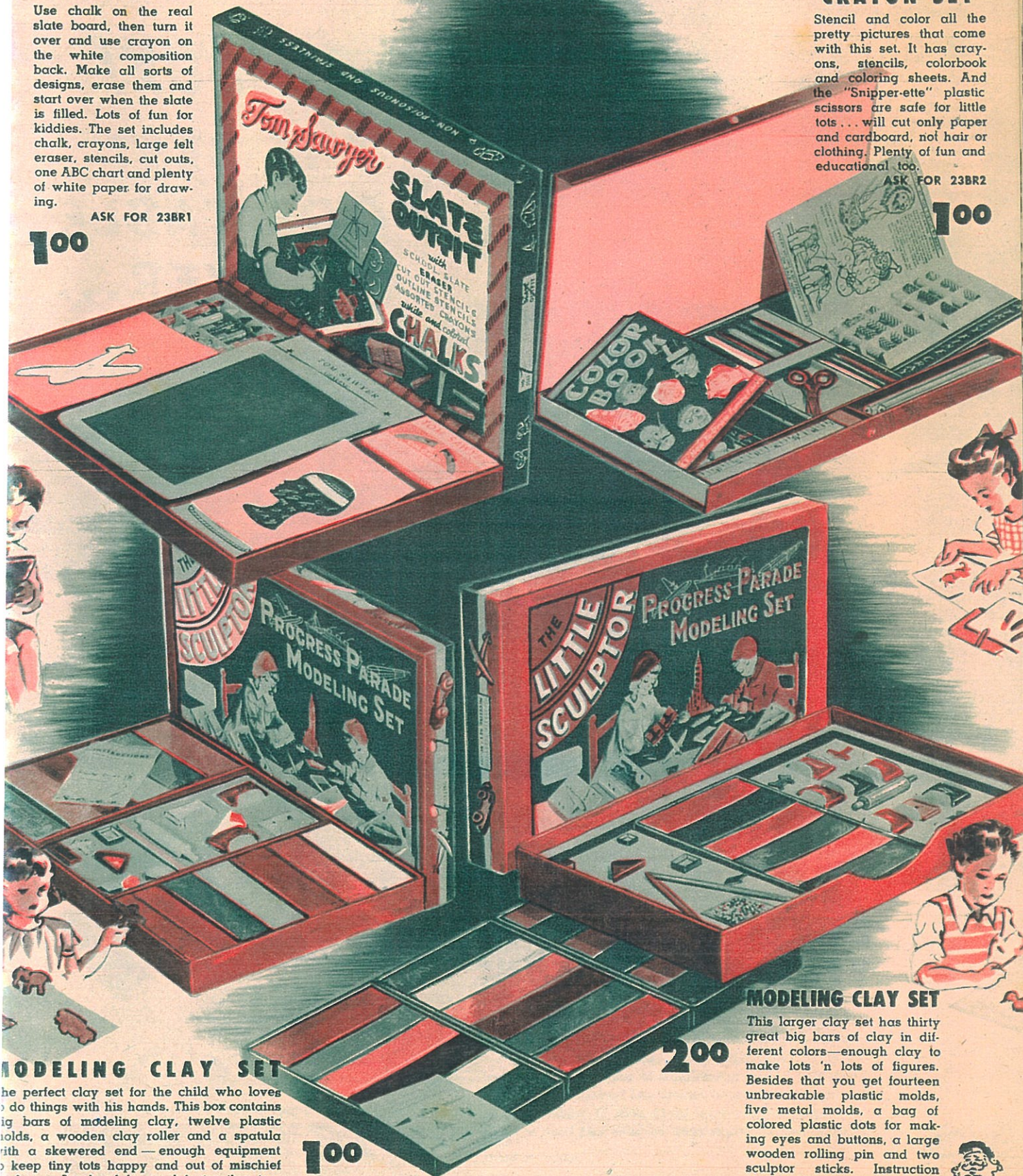
100

STENCIL & CRAYON SET

Stencil and color all the pretty pictures that come with this set. It has crayons, stencils, colorbook and coloring sheets. And the "Snipper-ette" plastic scissors are safe for little tots... will cut only paper and cardboard, not hair or clothing. Plenty of fun and educational too.

ASK FOR 23BR2

100



MODELING CLAY SET

The perfect clay set for the child who loves to do things with his hands. This box contains big bars of modeling clay, twelve plastic molds, a wooden clay roller and a spatula with a skewered end—enough equipment to keep tiny tots happy and out of mischief for hours. Loads of fun and instructing too.

ASK FOR 23BR3

100

MODELING CLAY SET

This larger clay set has thirty great big bars of clay in different colors—enough clay to make lots 'n lots of figures. Besides that you get fourteen unbreakable plastic molds, five metal molds, a bag of colored plastic dots for making eyes and buttons, a large wooden rolling pin and two sculptor sticks. Instruction sheet included.

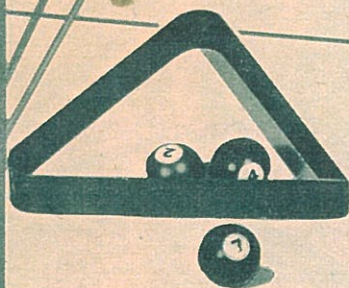
ASK FOR 23BR4

200





**OH
BOY!
THE BEST
POOL TABLE
EVER...**



Attractively Priced

ENDLESS AMOUNT OF YEAR 'ROUND FUN!

Oodles of fun for the entire family with this collapsible pool table. It's 44 x 24½ inches. Green Cloth playing surface and sturdy, double-braced legs afford professional table rigidity. Roll-A-Way feature returns balls to end tray. And just see the streamlined, rounded corners and beautiful ivory finish! Fully equipped with 1 set of 15 balls, 1 white cue ball, Triangle, two 32" maple cues, counters and book of rules.

ASK FOR 24BR1



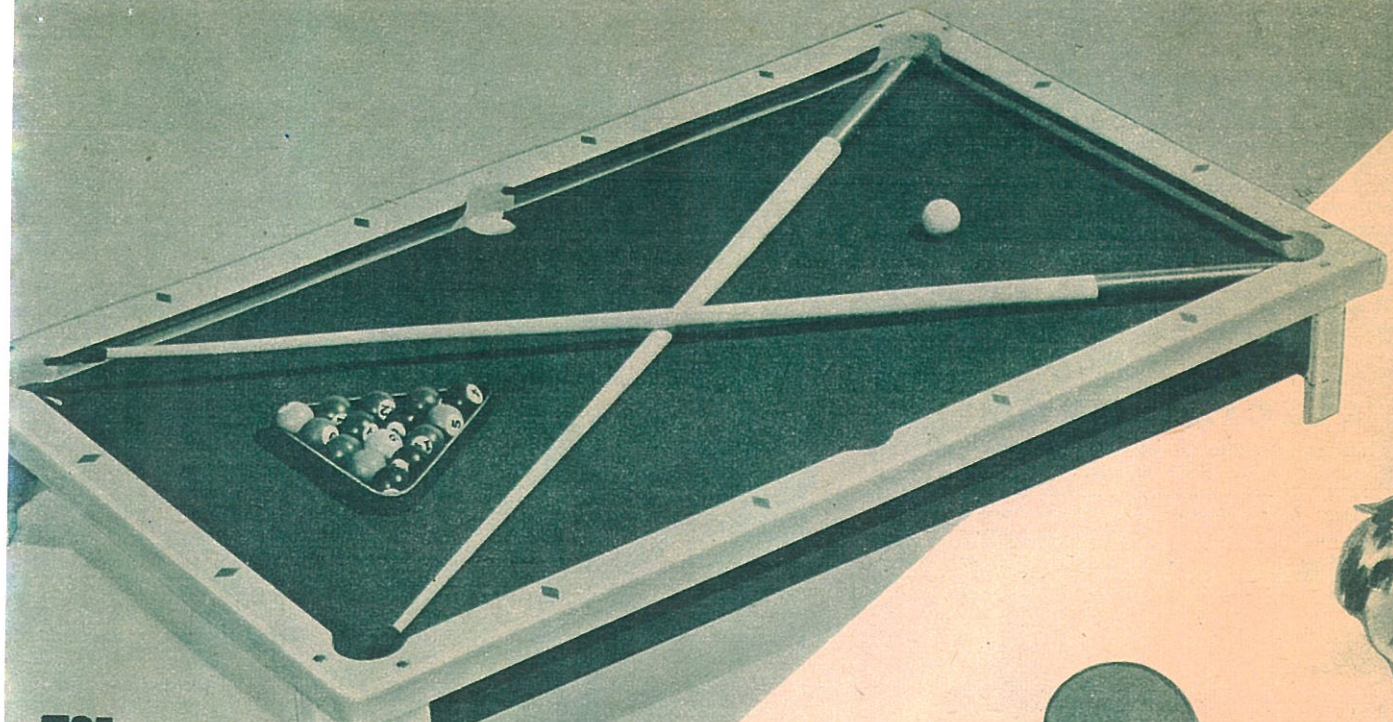
BOY'S WALLET

Real leather wallet has a secret pocket to carry valuable papers or extra money. Send 50c in coin or stamps to Billy and Ruth, Box 333, Philadelphia 5, Pa.



GIRL'S WALLET

Swell leather wallet with a handy change purse attached. Send 50c in coin or stamps to Billy and Ruth, Box 333, Philadelphia 5, Pa.

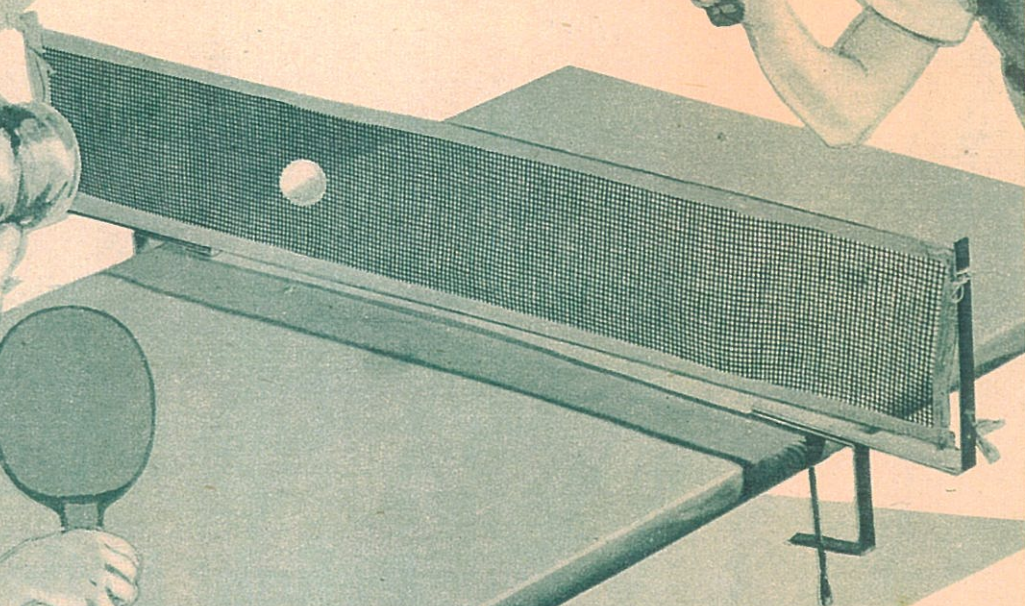
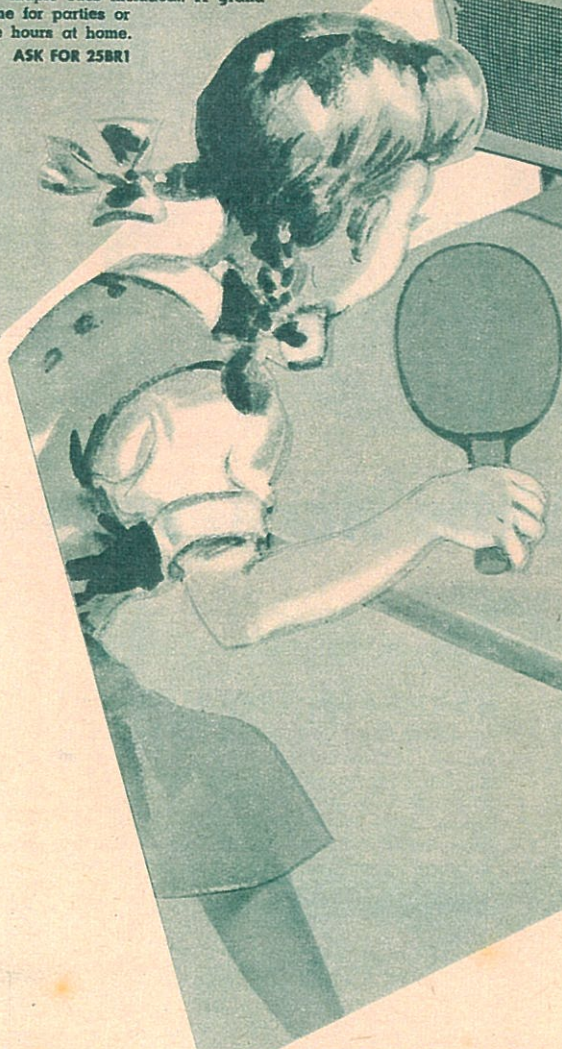


595

TABLE MODEL POOL TABLE

Easy to store, easy to use . . . this table model pool table with its gleaming ivory finish and green felt like, playing surface will delight the whole family. Size 30" x 17½" with set of fifteen numbered colored balls, one white cue ball, triangle and two 30" maple cues included. A grand game for parties or free hours at home.

ASK FOR 25BR1



300

TABLE TENNIS SET

A fast-moving fun-packed game for all the family. This set of two cork faced bats, steel extension posts, sixty-six-inch regulation tie net and two official balls is tops in table tennis equipment. Loads of fun for everyone.

ASK FOR 25BR2

TOASTER SET

Make "toast" for Dolly's breakfast on this non-electric play toaster. With its spring-action pop-up the lovely nickel-plated toy looks just like Mother's real toaster. You'll love the handsome tray and four matching relish dishes that come with it.

ASK FOR 26BR1

145

ELECTRIC IRON

Every Little Mother needs an iron like this to press Dolly's clothes. Cool, ebonized open-end handle designed to fit tiny hands. Underwriters' tested cord attached.

ASK FOR 26BR2

145

LEMONADE SERVER SET

Let's have a party and drink lemonade! This smart set of four glasses in a neat metal tray will delight the heart of any little hostess. So fill up the pitcher and we'll all have a glass.

ASK FOR 26BR3

100

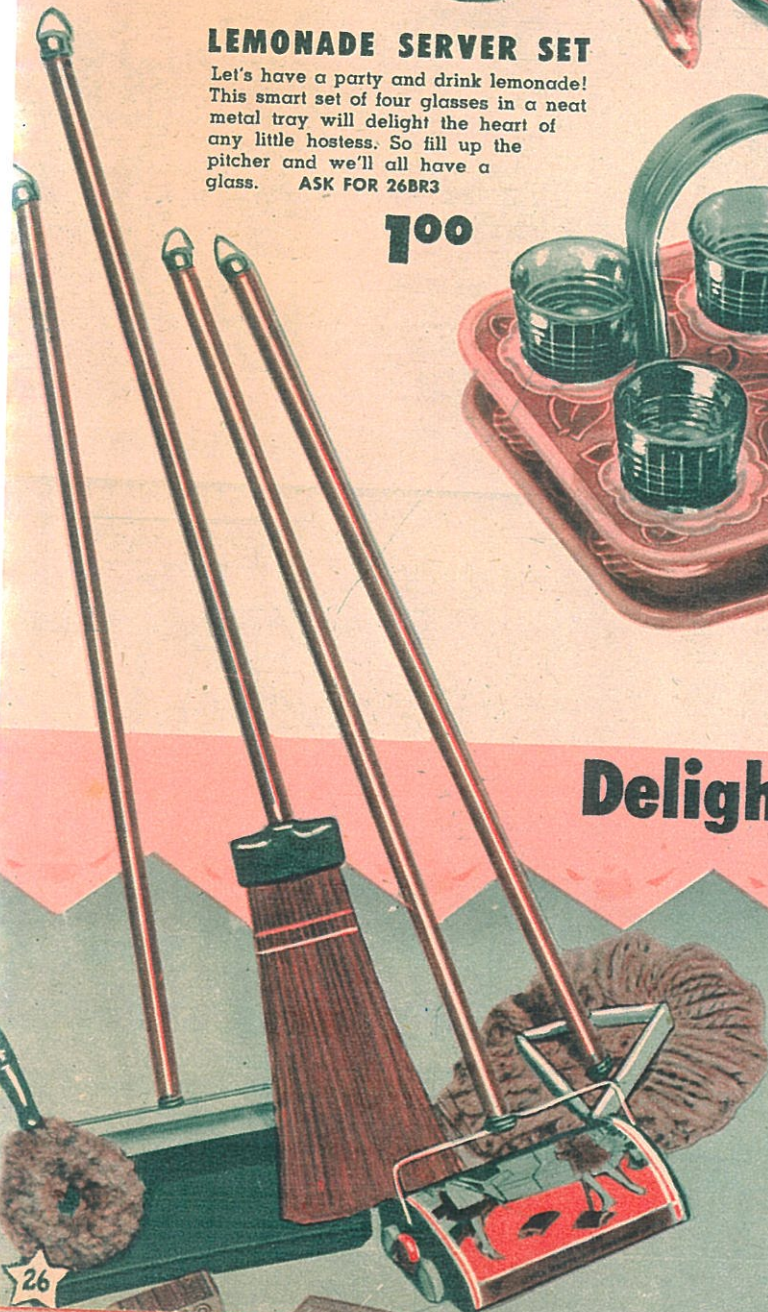
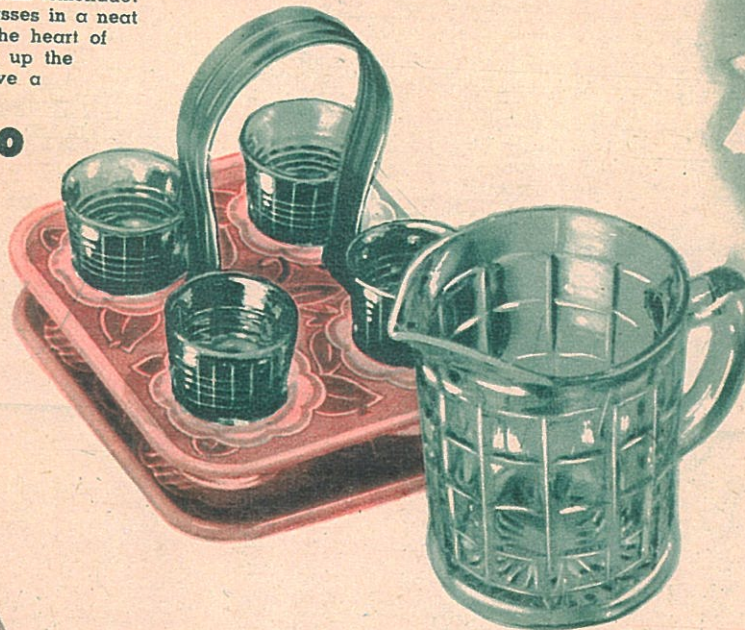
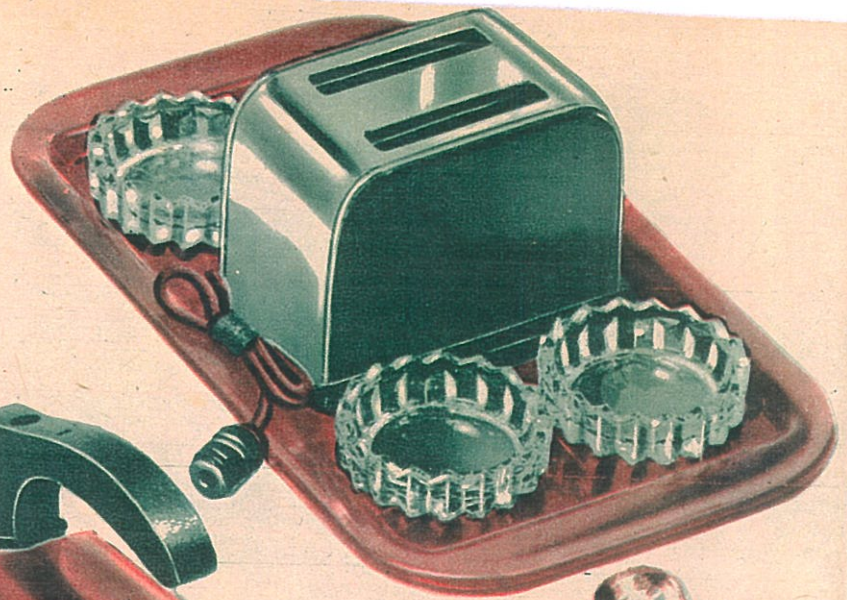
Delight Little Housekeepers

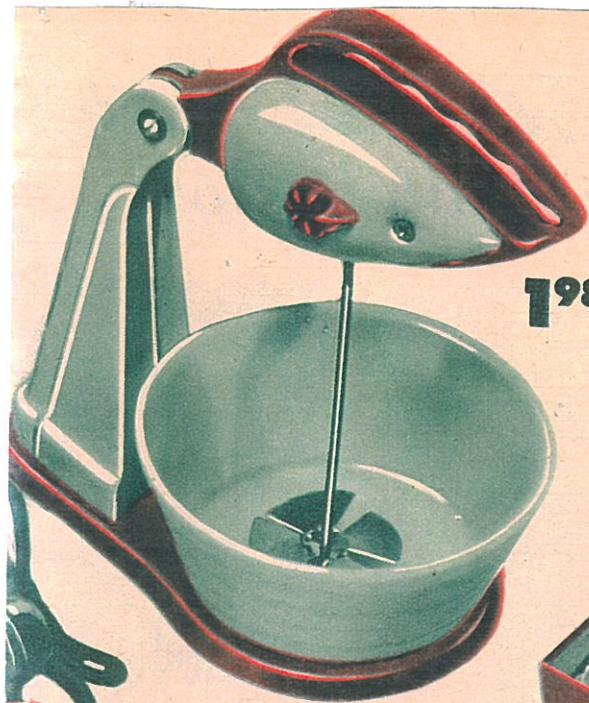
HANDI-AID CLEANING SET

Help Mother houseclean with your own cleaning set. This sturdy set contains all you need to keep your house spick and span—a metal carpet sweeper, triangular floor mop, hand mop, metal dustpan with a long handle, Life-buoy, Brillo, and Bab-O boxes. All tools painted in bright colors.

ASK FOR 26BR4

295





MIXER MAKER

You can whip cream for strawberry short cake or beat eggs for an omelet with this useful, non-electric toy. Just turn the handle of the sturdy mixer, and the beaters whirl. A "must" for the little girl who likes to help Mother cook.

198

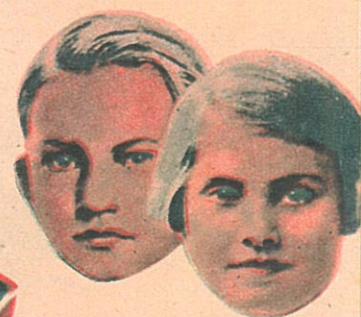
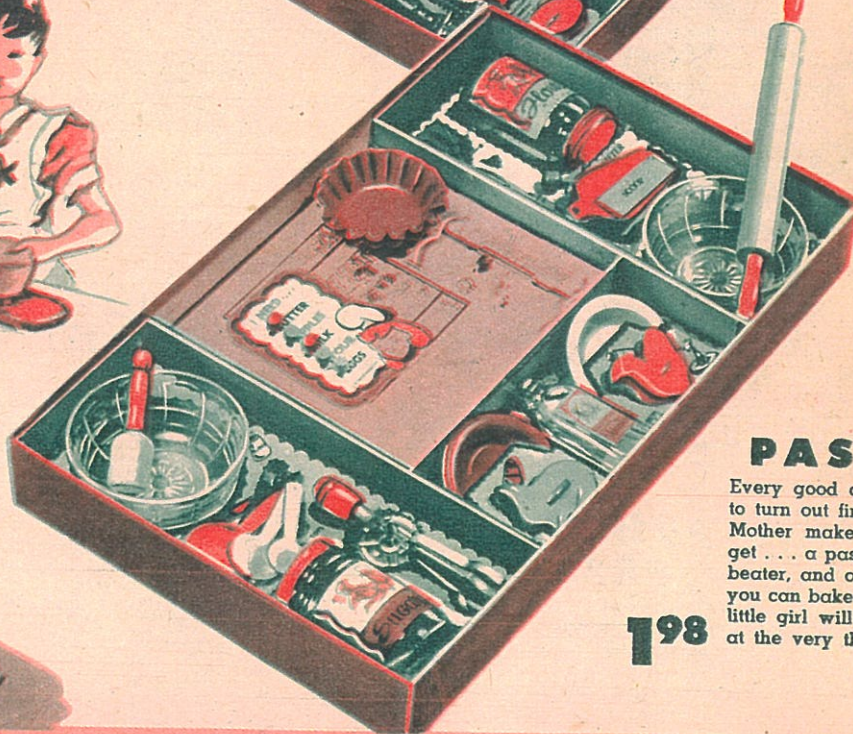
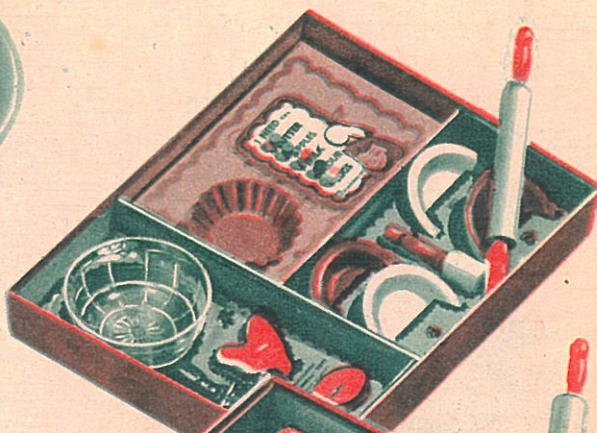
ASK FOR 27BR1

PASTRY SET

This smaller pastry set has a pastry board, rolling pin, glass mixing bowl, cookie cutters, pie plates, wood masher, egg beater, "I Need" board with pegs, an oven thermometer and some recipes for you to make.

ASK FOR 27BR2

98c



PASTRY SET

Every good cook needs a set like this to turn out fine baked goodies just like Mother makes. Just look at what you get . . . a pastry board, rolling pin, egg beater, and oh ever so many things so you can bake your pies and cakes. Any little girl will clap her hands with joy at the very thought of owning this set.

198

ASK FOR 27BR3

with Clever Kitchen Creations

TEA SET

Let's have a tea party! Invite your friends and serve them on this lovely glass tea set for four. Tea pot, sugar bowl and cream pitcher included. A treasure you'll be proud to own.

ASK FOR 27BR4

100



Billy and Ruth's VOCATIONAL TOYS...



750

PRINTING PRESS

Print your own club or neighborhood newspaper on this all-metal press. Not just a toy—it's the real thing! Metal printers' type, wood spacers, ink, brush, roller—everything a printer needs is included. Prints up to sizes $5\frac{1}{2} \times 3\frac{1}{2}$.

ASK FOR 28BR1



200

TELEGRAPH SIGNAL SET

It flashes for visual operation, clicks for telegraphic communication, and has a high frequency buzzer that sounds like short wave transmission. Made of heavy steel. Double set. Equipped for both sending and receiving. Batteries included.

ASK FOR 28BR2



595

TELEPHONE SET

This durable bakelite phone set actually works. Use them for room to room, or house to garage conversations. The two phones have a receiver-buzzer system built into it. Simply press the button and start to talk. Comes ready to use with fifty feet of wire. Only one battery required for both phones.

ASK FOR 28BR3

More than a Mere Toy!

STAR STUDDED TOYS

SCIENTIFIC — MECHANICAL



3⁰⁰

ELECTRIC CASTING SET

Set up a toy foundry in your own home. Mold and paint your own toy figures. It's swell fun. Outfit contains a three-figure mold, two mold handles, vise, electric ladle and stand, two jars of paint, brush, candle and twelve bars of casting metal.

ASK FOR 29BR1

SAF-TOY ENGINE

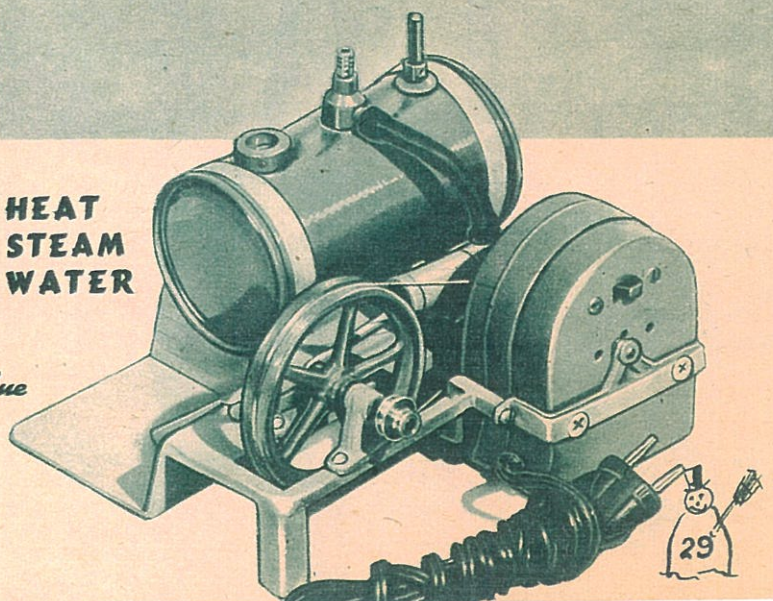
This all-metal electric engine that looks just like a real power plant. Boiler is of heavy gauge steel. Two-speed pulleys on motor and flywheel shafts provide a variety of speeds and powers. Equipped with compressed air line. No danger of fire or explosion. Fully enclosed and sealed for safety and is so durable it can not burn out.

ASK FOR 29BR3

A Perfect Miniature Engine!

**NO HEAT
NO STEAM
NO WATER**

Real Value



WORK BENCH

Hey, fellows here's a nifty work bench just like Dad's. Sturdily constructed of wood, it's a swell place to work and to store your tools. Attractively enameled in bright red except for the top which is natural finish. Comes with a vise, tool rack to keep your tools handy and a large drawer for storing equipment. **ASK FOR 29BR2**

Priced Right

BILLY AND RUTH'S

BABY DOLLS ARE

THE MOST GORGEOUS

EVER SHOWN!

... Santa



ASK FOR 30BR3

ASK FOR 30BR4

AMERICAN BEAUTY

A lovely doll just waiting for a mother. She has a soft body with composition arms, legs and head and looks so pretty in her beautiful dress and bonnet. She can cry and move her head and go to sleep. Just look at her lovely hair peeping out from under the bonnet! And she has a petticoat, panties, shoes and stockings, too.

ASK FOR 30BR1

SWEETUMS

You'll want to hold this doll and rock her to sleep the minute you set eyes on her. She has curly hair and long eyelashes. She cries and turns her head. You'll love her pretty doll clothes—a lovely organdy dress with a bonnet to match, petticoat and panties, shoes and stockings.

ASK FOR 30BR2

Priced Right

DOLL-E-HICHAIRS

Dolly will eat all her vegetables when you put her in this lovely 18½" high steel highchair. Non-slip rubber feet protect your floors from scratching. Movable food tray. Beautifully finished in pastel colors. Decorated with a colorful decal.

ASK FOR 30BR4

A steel highchair to top them all! It's thirty inches high and is just the thing for the dolly who is accustomed to only the finest. Non-slip, non-scratching rubber feet protect your floors. Colorful baked enamel finish in pastel blue with an ivory food tray and decorative decal.

ASK FOR 30BR3

Attractively Priced