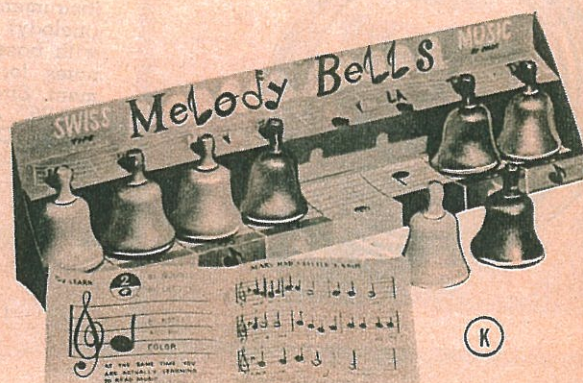
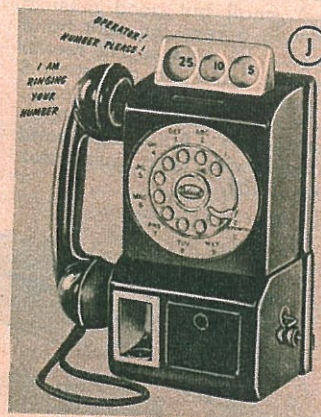
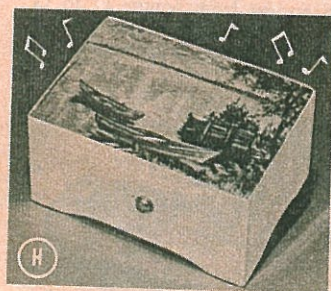
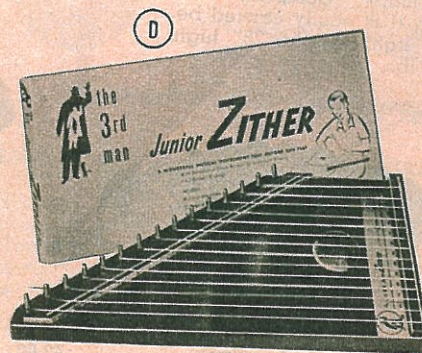
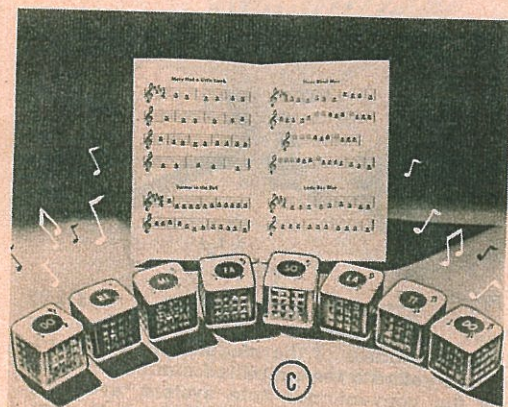




**A 44-7 SPINET PIANO WITH BENCH** ..... \$28.95  
(5 yrs. up)—A pleasingly modern version of piano design, this toy instrument employs the highest grade steel sounding bars. It is very accurately tuned and helps to train the ear and accustom the child to the musical scale. Full width keys initiate the youngster to big piano touch. With 30 keys, sharps and flats, finished in mahogany with matching bench. 20 3/4 x 15 1/4 x 24 1/4" high. Ship. wt. 28 lbs. Express only.



**B 4-16 TOY PIANO Ship.** wt. 7 lbs. .... \$5.50  
(3 yrs. up)—Make your concert debut with this baby grand piano. The piano with mirrored front panel is 13" long, 13" wide and stands 5 1/2" high with the hinged top raised. Keyboard has 25 sharp and flat keys—mello-tone chromatic chime sounding bars of steel.



**C 3-17 KARILLON BLOCKS** Ship. wt. 2 lbs. .... \$3.00  
(1 to 8 yrs.)—Eight very colorful 2" plastic blocks each containing a bell. Each bell is in tune with the others to complete the scale, each rings when the block is shaken. Because of the size, shape and color these blocks attract small children, while their musical scale enables older ones to play simple tunes with them.

**D 11-34 JUNIOR ZITHER** Ship. wt. 3 lbs. .... \$6.00  
(7 yrs. up)—By sliding any one of the song charts (10 in all) under the strings and plucking the strings where the black dots appear this 2 full octave, 15 stringed instrument can be instantly played. Beautifully made of hardwood with mahogany finish. Tuning key, pick and extra strings, instruction manual included. Measures 16 1/2".

**E 3-134 FLAMINGO UKE WITH GODFREY PLAYER** ..... \$5.00  
Arthur Godfrey's short cut to harmonizing happiness—a full sized smart looking plastic ukelele with slip on button operated chord maker. Eliminates complicated fingering. No lessons, no experience needed. Just follow the 16-page song fest book. Ship. wt. 3 lbs.

**SWISS MUSIC BOXES WITH CRANK HANDLES** — Enchanting music boxes that play a delightful tune and especially constructed so that children may turn the crank either way without breaking. Round metal cases with attractive pictures on top. Ship. wt. 1 lb. ea.

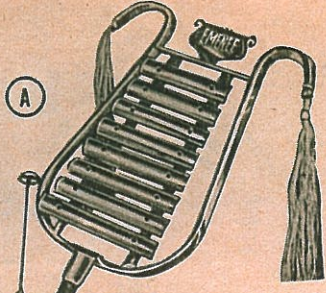
**F 2-315 CRANK MUSIC BOX, 18 notes** 2 1/4" in diam. .... \$3.75  
**G 2-313 CRANK MUSIC BOX, 22 notes** 2 3/4" in diam. .... \$4.75

**H 2-314 SWISS MUSIC BOX (Wind Up)** Ship. wt. 2 lbs. .... \$10.00  
A beautifully finished natural wooden case with a charming picture on hinged cover. Plays two delightful tunes when wound up.

**J 4-89 TALKING WALL TELEPHONE BANK** Ship. wt. 4 lbs. .... \$3.95  
A combination play phone that's a bank and talking toy. Hand-wind, unbreakable record repeats: "Operator . . . operator. Number please. What number are you calling? . . . Thank you, I'm ringing your number." In addition to slots for coins of 5c, 10c, and 25c, there's a bill slot too. Has clicking dial with return spring. Coin return slot actually works. Comes with play money. Black plastic. 9 3/8 x 6 3/4".

**K 17-207 SWISS MELODY BELLS** ..... \$5.00  
(3 to 12 yrs.)—Only the ability to distinguish color is needed to produce familiar tunes on these eight, true-tone Swiss Melody Bells. Each note on the music in the 16-page note book is colored to match the correct bell, suspended inside the 4" high shell. Wt. 2 lbs.



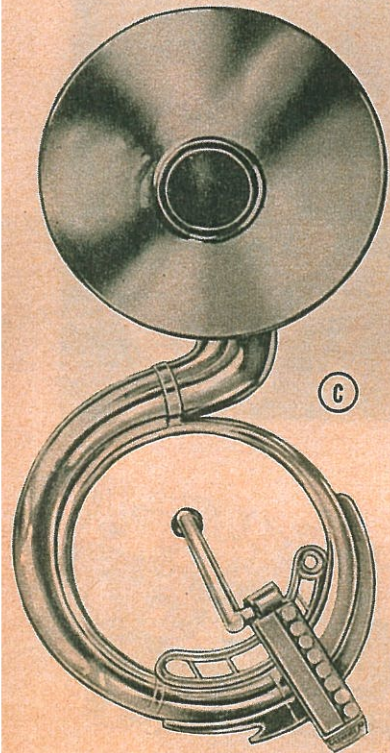


**WIND INSTRUMENTS (4 to 10 years)**—Encourage the musical talent among youngsters with these toy instruments. All are made of durable plastic with shiny, bright, engrave-effect, metallic finish (like professional instruments). All have brass reeds, assuring true clear tones. Each comes complete with luggage carrying case, detachable music stand and music book.



**A 4-72 GOLDEN GLOCKENSPIEL** .....\$4.00  
Eight clear-toned bars provide the octave for the melodic music that seems to float above the crash of cymbals and the beat of the drums in any parade. Can be used indoors as a xylophone or outdoors as a marching band instrument. Decorated with colorful silken tassels. 25" long. Ship. wt. 4 lbs. See page 75 for Drum Major costume.

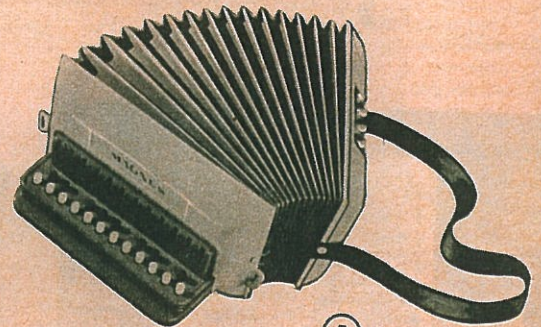
**B 17-301 GOLDEN TRUMPET** .....\$4.00  
Youngsters can soon play all of the many bugle calls and some marches. Has four brass hand-turned reed notes and authentic looking trumpet mute. 13" long. Ship. wt. 2 lbs.



**C 4-76 GOLDEN TUBA** .....\$15.00  
A full octave of eight "oom-pah" notes which can be played singly as parade accompaniment or in organlike harmony. Complete with music holder, it is easily carried because of its light weight. 28" high. Ship. wt. 8 lbs.



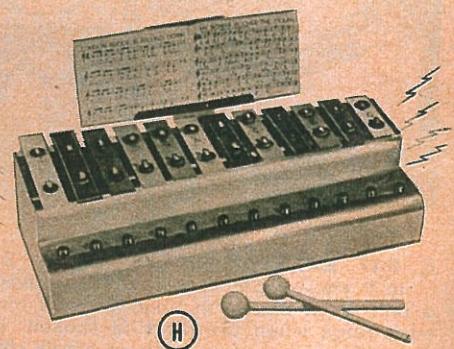
**D 11-35 CONCERTINA** .....\$3.00  
(4 yrs. up)—A small but good musical instrument having 6 keys for right hand (melody) playing 1½ octaves (12 reeds) with base key for left hand actuating 6 notes for chord or rhythm accompaniment. Strong 9 fold fabric bellows open to 11½", closes to 5½". Adjustable hand straps. Complete with song instruction folio. Ship. wt. 2 lbs.



**E 12-21 STUDENT ACCORDION** .....\$12.95  
(7 yrs. up)—A real instrument . . . conforms to all the standards of the modern piano accordion and yet with the simplified numbers system plus the conventional note system, everyday popular songs and melodies are easy to play. Light and beautifully constructed in rich plastic, pyroxalin coated bellows. Has full vibrant tones in key of C—more than one and one-half octaves and a range from lower C to G above middle C. Twenty treble buttons, 4 bass. Instruction song folio included. Ship. wt. 3 lbs.

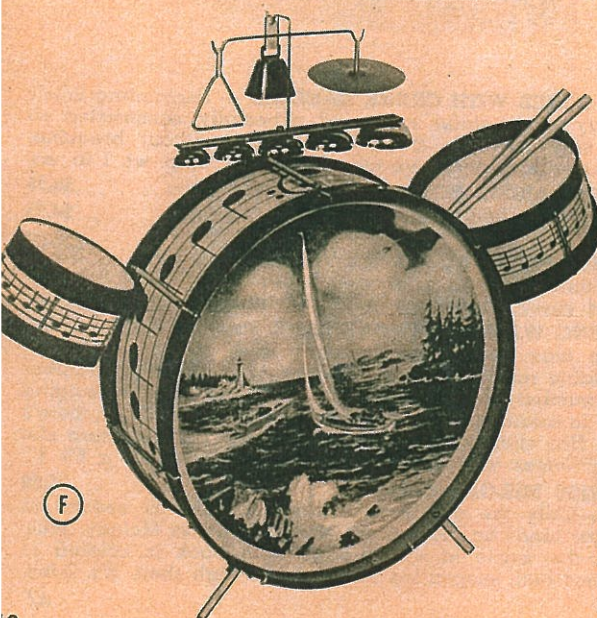


**F 40-240 CHILDREN'S JAZZ SET** .....\$16.50  
(6 to 12 yrs.)—Fine for improving personal accompaniment to radio or phonograph music. Set features a gaily colored 18" bass drum decorated with nautical scene and a 9" snare drum, each having a genuine skin head. Included are a 6½" tom-tom drum, foot pedal, pair of drum sticks, crash cymbal, foot pedal cymbal; 5 gong bells, triangle and cow bell. Express only. Ship. wt. 9 lbs.



**G 11-39 XYLOPHONE** .....\$3.75  
(4 yrs. up)—It is so easy to play a tune on the 12-true-toned, gold finished tone-bars of this sweet sounding xylophone. All metal construction, 18" long, one wooden and one rubber topped mallet, plus a simple to follow 16 page music book and a helpful instruction sheet. Ship. wt. 4 lbs.

**H 19-21 ELECTROMATIC XYLOPHONE** .....\$10.00  
(4 yrs. up)—A musical innovation with great eye and ear appeal. The mellow tones of an xylophone are produced by pressing the buttons opposite their respective bars. All 12 bars and their corresponding buttons are colored to match with the easy-to-read colored notes in the music book. Beautifully finished in chrome, the xylophone has a removable music rack and is 18½" long and 5" high. Can be played as regular xylophone. Ship. wt. 7 lbs.

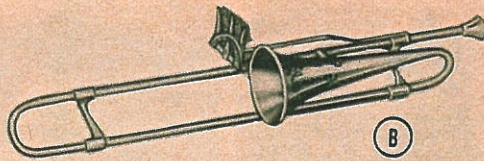






(A)

**A 4-88 EBNY & SILVER CLARINET**...\$4.00  
Has 14 durable hand-turned brass reeds (full scale plus 2 triple reed harmony chords). 17" long. Ship. wt. 2 lbs.



(B)

**B 4-92 GOLDEN TROMBONE**...\$7.00  
Has 8 brass reeds... full scale notes play as slide moves in and out. With new automatic play indicator. 27" long. Ship. wt. 4 lbs.



(D)



(E)

**D 19-17 THREE-SPEED PHONOGRAPH**...\$26.95  
Exceptionally fine tone, plays 33, 45 or 78 RPM records up to 12" size. Good performance is assured by a HI-Gain amplifier, crystal pickup, Alnico V speaker and all purpose needle. Tone control knob. Wood case covered in two-tone fabric finish. UL approved. AC current. Size 13 x 10 x 5 1/2". Ship. wt. 9 lbs.



(F)

**F 19-10 CHILD'S PHONOGRAPH**...\$13.95  
A portable electric kiddie phonograph that will play 7", 10" and 12" records at 78 RPM. It can be left plugged in since it has an 'ON - OFF' switch and no shock hazard (UL approved). Wood case attractively covered with contrasting plaid and solid color. Size 10 x 12 x 5 1/2". No winding. AC current. Ship. wt. 8 lbs.

**E PHONOGRAPH RECORDS** Each set consists of 6 double-sided, unbreakable, 10" records. Ship. wt. 3 lbs. each.

**17-214 NURSERY RECORDS**...\$3.00

Consists of Snow White and 7 Dwarfs, Ugly Duckling, Alice in Wonderland, Peter and the Wolf, Marches for Children, Tippet Tap Toes.

**17-217 CHRISTMAS RECORDS**...\$3.00

Consists of Jingle Bells, Rudolf The Red Nosed Reindeer, Xmas Carols, Red Shoes by Hans Christian Anderson, God Rest Ye Merry Gentlemen, Silent Night.

**G 44-1 CHILD'S CONSOLE**

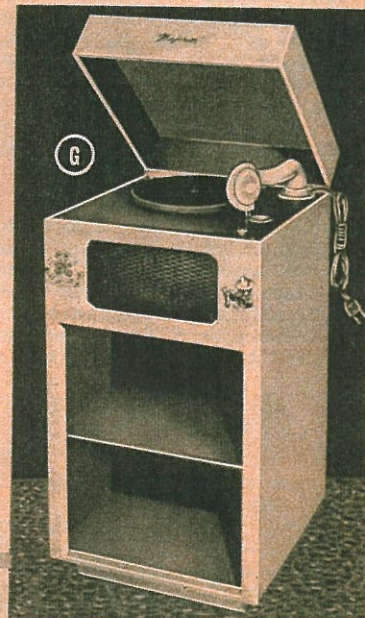
**PHONOGRAPH** Ship. wt. 23 lbs. Exp. \$25.00

Eye and ear appeal are combined in this attractive consolette that plays all 78 RPM records up to 12". Balanced arm and reproducer results in longer record wear. All wood case covered with washable fabric, of eggshell background with red designs. Two record shelves help the youngsters keep their records neat and safe. UL approved. AC current. Size 25 x 13 1/4 x 13 1/4".



(C)

**C 4-90 SILVER SAXOPHONE**...\$6.00  
Has 14 brass reeds (not only plays melody but 2 triple reeds automatically provide harmony chords). 17" long. Ship. wt. 4 lbs.



(G)



(H)



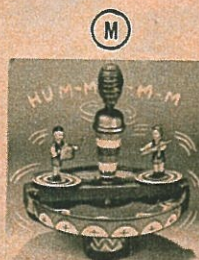
(J)



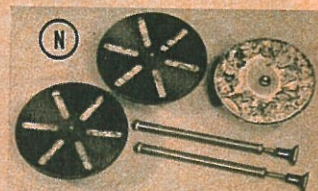
(K)



(L)



(M)



(N)

**H 17-381 MUSICAL TOP** (With Swiss Music Box)...\$6.75  
(2 years up)—The traditionally large handle spun top (8" diam.) with the added feature of a concealed Swiss music box that plays a merry tune as the gleaming red and gold top spins around and around. Imported. Ship. wt. 2 lbs.

**J 11-37 CHORAL TOP** (Imported)...\$3.00  
(2 yrs. up)—The motion and hum of this old favorite continues to amuse. Spinning handle makes it easy for the top to spin and hum long and fast. Made of metal, 7 1/2" diameter. Plate Base. Choral Tone. Colorfully lithographed. Ship. wt. 3 lbs.

**K 3-4 MUSICAL BELL TOP** (With Swiss Music Box)...\$5.75  
(2 yrs. up)—This bright red all metal bell, 6" in diameter, decorated with stripes and musical notes, has a round Swiss music box instead of the usual tone. When wound up the bell top will slowly revolve on its musical base or better yet, suspended it will swing while playing its cheerful tune. Ship. wt. 3 lbs. (Imported.)

**L 17-333 MUSICAL TOP** (Imported)...\$2.50  
(2 to 6 yrs.)—Several firm pushes on the handle of this 10" tall, metal top make it spin causing it to play in soft organ-like tones chords in diminishing progression for the full scale. Color effect changes simultaneously under the plastic cover. Ship. wt. 3 lbs.

**M 3-7 DANCE TOP** (Imported)...\$2.50  
(2 yrs. up)—A few pushes on the handle of this very colorful all metal 6" top make it spin and hum while the two small figures mounted on the top slowly revolve. The musical instruments which they hold are for effect only. Ship. wt. 2 lbs.

**N 2-8 SPIN-N-SEE TOP** (Imported)...\$2.50  
(3 yrs. up)—Here are three groups of colored pictures, one of Egyptian scenes, another of fish and the third of Indians and Cowboys. The pictures, mounted on a rubber suction base, are covered by a black slotted metal disc. By causing the discs to spin with the special plunger, the pictures can be clearly seen and enjoyed which before were hardly discernible. Picture discs measure 4" in diameter. Ship. wt. 2 lbs.



**FAD SCHWARZ**  
745 FIFTH AVENUE, N.Y.

FREE DELIVERY  
TO 13 EASTERN  
STATES SEE IN-  
SIDE BACK COVER

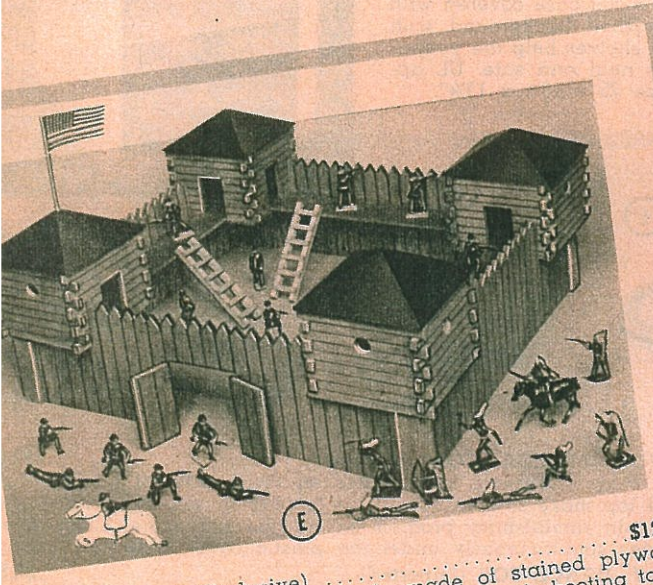


**17-11 STAGE COACH WITH FIGURES** (Imported).....\$5.00  
(5 yrs. up)—A typical Stage Coach as used in the frontier days. Made of metal, carefully detailed and drawn by two spirited horses. Naturally there is a driver and a cowboy armed to guard the stage coach through exciting Indian Territory. Measures 6 3/4" long overall. Included are 12 assorted figures of fighting Cowboys and Indians, averaging 3" mounted and 2" standing. Ship. wt. 4 lbs.

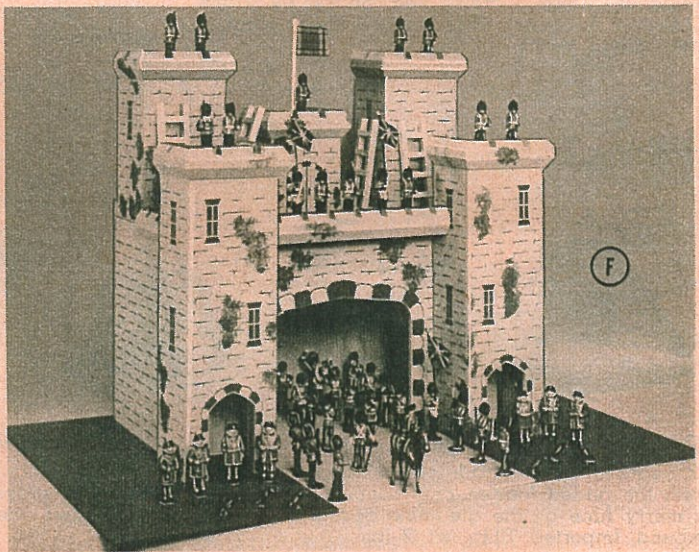
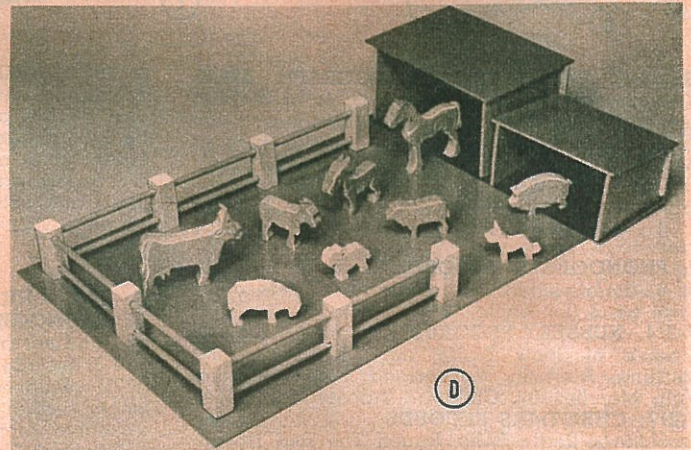
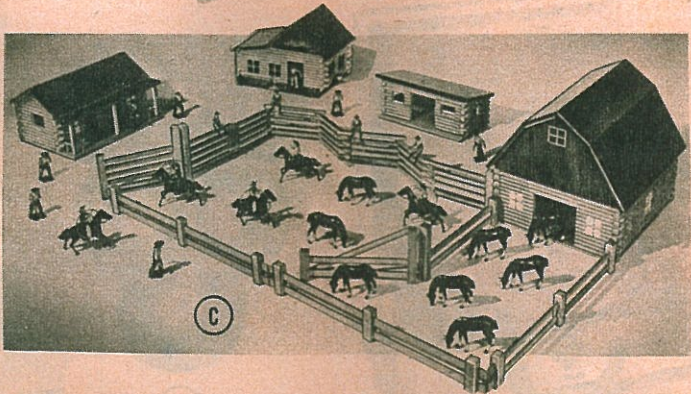
**12-7 COWBOY-INDIAN CAMP** (Exclusive).....\$22.50  
(5 yrs. up)—Playing Cowboys and Indians is great fun especially with this realistic setting. Consists of a 24 x 30" green base, two wooden Cowboy cabins surrounded by a rustic fence, two colorful spees, 4 trees, birch logs, also extremely fine composition figures (Cowboys, 11 Indians), in various positions, having excellent detail and are beautifully painted. Ship. wt. 12 lbs.

**12-11 BONES BROTHERS RANCH** (Exclusive).....\$23.75  
(For boys or girls of 5 yrs. up)—A real breath of the old Wild West. This ranch (on a 30 x 30" base) provides a degree of authenticity that is sure to please the most particular young western authority. The wooden ranch-house, bunk-house, barn and stable are painted and stained with a real rustic western effect. The metal Cowboys, on foot and in the saddle, stand ready to guard their "hosses". Fence and corral is in movable sections. Ship. wt. 17 lbs.

**11-8 FARMYARD** (Imported) Ship. wt. 3 lbs.....\$4.75  
(For boys or girls of 5 yrs. up)—A neat and bright farmyard with 9 hand-etched wood animal figures designed to withstand the rigors of active play. The 5" x 7" barn and 5" x 6" shed have slotted wood sides and removable red roofs and rest on brown wood bases. The yard itself is made of two 12" x 9" wood slabs painted a pastoral green. The animals, in varnished natural wood finish, ranging from a dog to a horse can be kept from "running away" by the 7-section rail fence which can be taken down or changed at will. Especially designed for very young children.

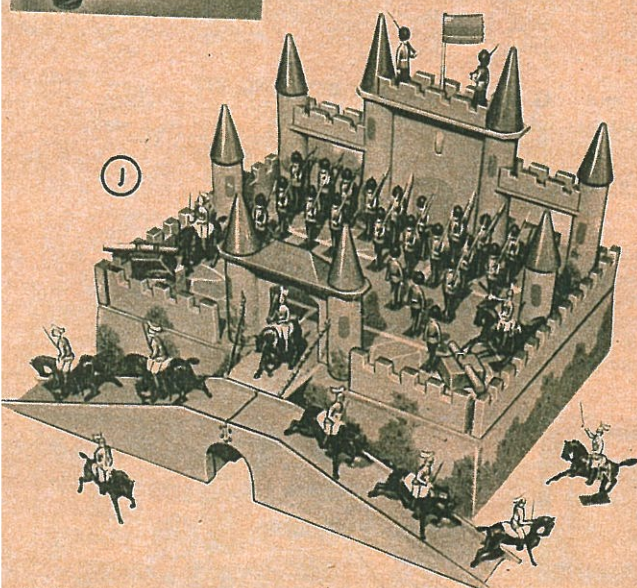
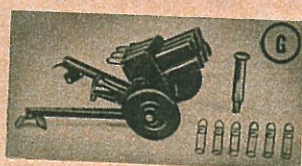
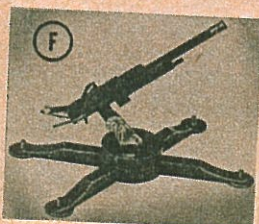
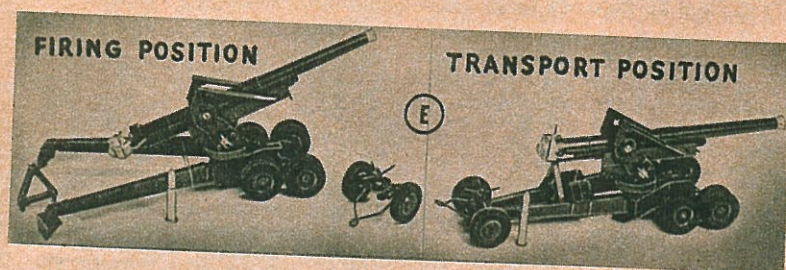
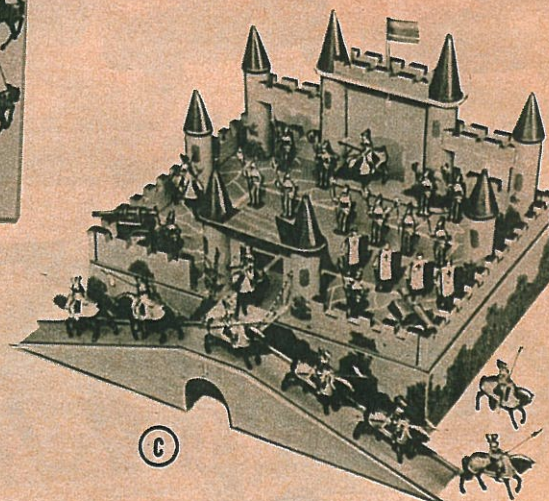
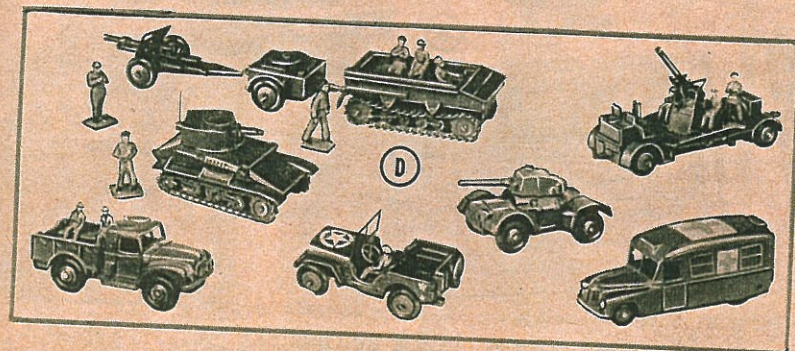
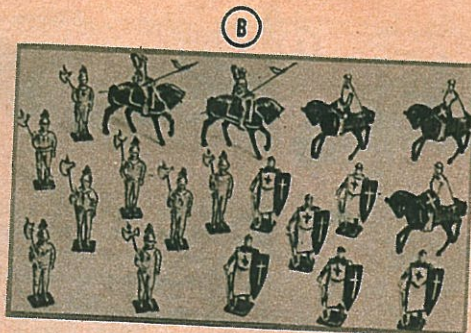
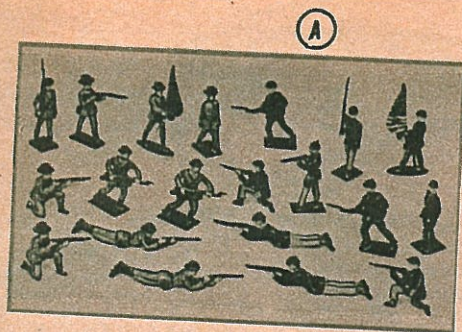


**4-5 STOCKADE** (Exclusive).....\$12.75  
(For boys or girls of 5 yrs. up)—An all wooden stockade made of stained plywood, measuring about 16" square, having a lookout and shooting tower in each corner, also a ramp running around inside for the Cowboy and Cavalry occupants who are constantly molested by the Indians from the outside. Set includes 23 all metal figures in assorted dress in various poses. A very well made set, an inspiration to relive many exciting hours of bygone days. Ship. wt. 7 lbs.



**F 11-32 FORT WITH SOLDIERS** (Exclusive).....\$30.00  
Amid a medieval setting, the mounted Queen reviews her troops. Set on a green and gray 3-piece masonite base, the Fort 18 x 18 x 28 1/2" is constructed of wood, painted to simulate stone. Its effectiveness is increased by the "ivy" on the tower walls. Four towers, reached by removable wooden ladders, are manned by armed soldiers, while the honor guard, including an officer, beefeaters, a band, flag bearers and ravens, is reviewed by the Queen. Ship. wt. 17 lbs.  
**11-16 FORT** Without soldiers. Ship. wt. 15 lbs.....\$15.95





**A 4-41 UNION CONFEDERATE SOLDIERS** (Imported) **\$4.50**  
Set consists of 20 metal soldiers, 16 in various fighting positions, two flag bearers and two commissioned officers. Half wear the gray of the Confederate Army, the others the Union blue. Standing figures 2 1/4\"/>

**B 17-174 KNIGHTS-CRUSADERS** (Imported) **\$4.50**  
Just as original Crusaders (the 2nd) came from England so do these. Nineteen figures in all, 5 mounted (2 in plate armor, 3 in chain-mail) 14 on foot (6 in typical white and blue robe with sword and shield and 8 in gold plate-armor). Average height 2 1/4\"/>

**C 11-41 CASTLE WITH KNIGHTS** (Exclusive) **\$16.75**  
(4 yrs. up)—A perfect setting for "King Arthur and His Knights". Like all good citadels this castle has towers, turrets, arches, parade ground, ramp and draw bridge. 10 x 16 1/2 x 23\"/>

**12-23 CASTLE WITHOUT KNIGHTS** Ship. wt. 8 lbs. **\$10.95**

**D 2-15 DINKY TOY MECHANIZED ARMY** **\$8.95**  
(5 yrs. up)—A splendid collection of accurate miniatures of a motorized Army unit. The all-metal, 1/4\"/>

**E 17-158 155MM GUN** (Britain) **\$10.75**  
A fully working scale model with excellent detail of the American 155MM gun used in both the British and American Services. The olive green gun carriage measures 9 1/2\"/>

**ASTRA FIELD PIECES** (6 to 12 yrs.)—Excellent accessories for soldier play, these faithful scale reproductions of world famous field guns actually shoot by spring action harmless projectiles up to ten feet. The "gun crew" sights for direction, cranks for elevation, loads and fires. (Imported).

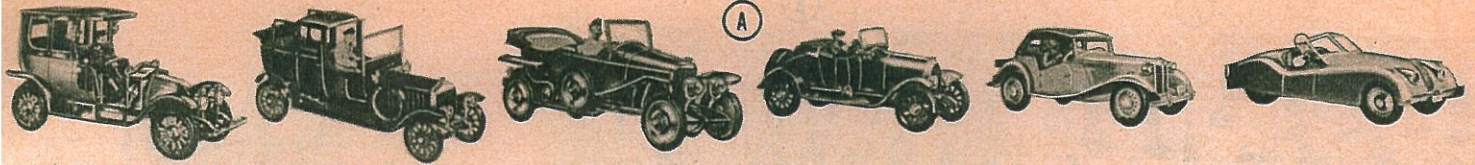
**F 18-110 ANTI-AIRCRAFT GUN** Elevated height 7\"/>

**G 18-111 ROCKET GUN** (Imported) **\$6.00**  
The six metal rockets can be propelled singly or in two tiers of three. Split trails for stability; elevation knob for accuracy. 6 3/4\"/>

**H 4-102 ANTI-AIRCRAFT GUN** **\$2.50**  
Turns on metal base. Barrel 4 1/2\"/>

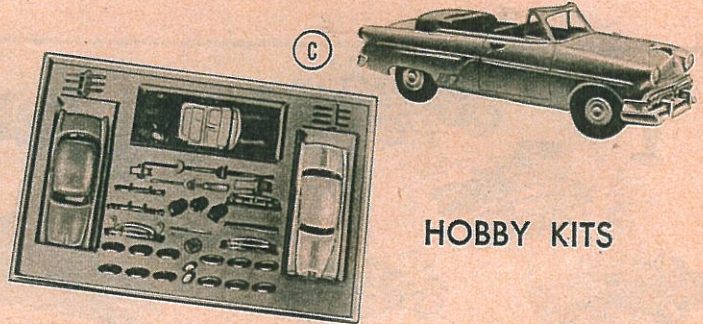
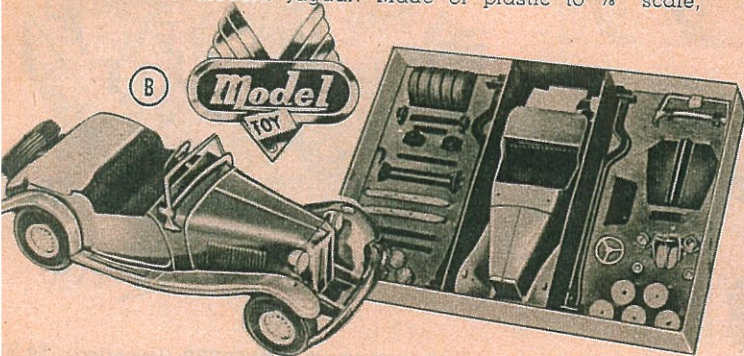
WHEN ORDERING FROM CATALOG, BE SURE TO STATE  
ITEM NAME AND NUMBER, COLOR AND SIZE WHERE  
NEEDED, AND SHIPPING WEIGHT AND PRICE



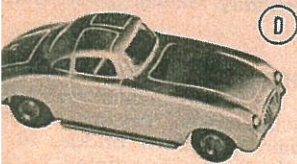
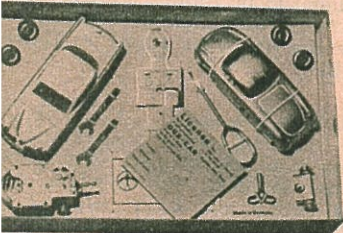


**A 18-206 HIGHWAY PIONEERS KIT** .....\$4.95  
(8 yrs. up)—Each of the five kits makes a valued non-mechanical collectors item when finished, ranging from the 1907 Renault limousine to the modern Jaguar. Made of plastic to  $\frac{3}{8}$ " scale,

each of the cars has a driver. Set contains paints, brush, thinner and cement for the assembly and decoration of the autos. Besides the two already mentioned, there are 1913 Mercedes-Benz, 1915 Fiat, and 1953 MG Model TD. Ship. wt. 3 lbs.



## HOBBY KITS



**B 12-1 SPORTS CAR KIT (Model MG)** .....\$10.95  
(8 yrs. up)—A very substantial model of the internationally popular English MG sport car to be assembled with only a screw driver. While the 14", all metal, die cast, prime coated body comes already assembled, the chassis and all its component parts do not. By following the very understandable chart, the frame, floor boards, steering column, wheel yokes, springs, tie rods, rubber tired wheels and their rims are cleverly assembled ready to be combined with the body to form the complete job. Finished color and refinements can be applied according to individual taste. Car can be disassembled at any time and the 26 steps for assembling repeated. See below for paints. Ship. wt. 8 lbs.

**12-20 ENAMEL PAINTS (Not illustrated)** .....\$1.00  
Set of 14 decorative assorted paints in jars including plastic cement and thinner, excellent for above and any other model work. Wt. 2 lbs.

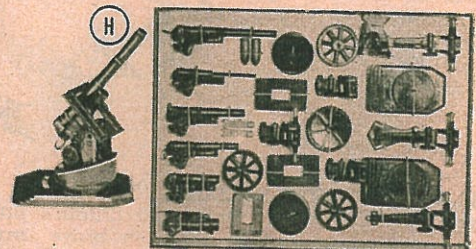
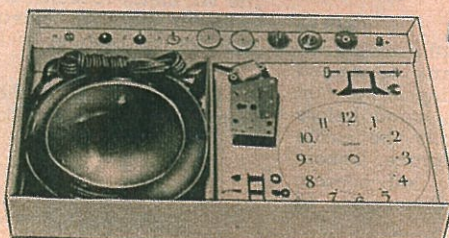
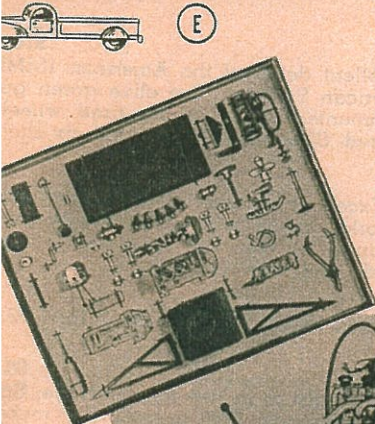
**C 4-65 CAR ASSEMBLY KIT** .....\$5.00  
(8 yrs. up)—An interesting set for the young mechanic. Here are three  $7\frac{1}{2}$ " plastic bodies into which the one piece metal chassis must be fitted and then equipped with axles, wheels, bumpers, etc., to make a handsome non-operating 1954 Ford Convertible, Pontiac Catalina and Buick Roadmaster. Paints included for two-toning. Ship. wt. 4 lbs.

**D 19-36 AUTO ASSEMBLY KIT (Imported)** \$4.50  
An assembly job but not an intricate one for boys 8 or older. A quality combination consisting of two completed metal bodies approximately 5" long of a Mercedes and a Studebaker into which the chassis must be first secured, then the already assembled spring motor, axles and finally the rubber tires to make each car operative. Wrenches and tools for the instructive job included. Ship. wt. 3 lbs.

**E 4-15 TRUCK BUILDER SET** .....\$12.00  
(7 to 10 yrs.)—Miniature mechanical trucks, approximately 5" in length, can be easily assembled by joining together with small bolts the die-cast, finely enameled metal parts of this set imported from France. Set consists of 2 chassis, 2 wind-up motors, a dump truck body, a fire truck with elevating ladder, a tractor truck and two trailers for hauling cargo one of which has a tail ramp, the other a hoist. All parts are interchangeable for absorbing fun. Ship. wt. 3 lbs.

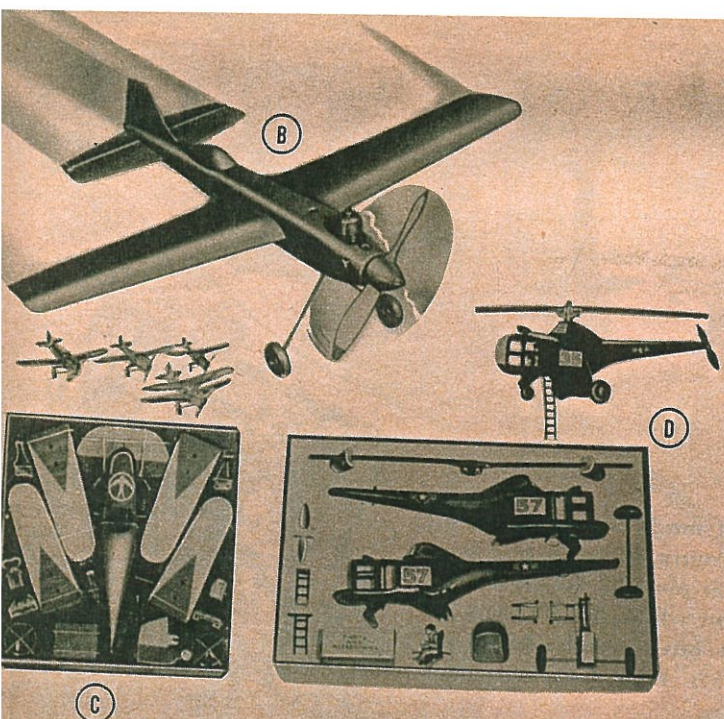
**F 3-109 TRANSPARENT ENGINE ASSEMBLY KIT (Imported)** .....\$22.50  
(10 yrs. up)—An ingenious study model of an engine that is something more than a toy. This educational outfit will enable boys to understand the construction and operation of a four cylinder combustion engine, learn to know its various parts and after assembly can actually see its working parts move through the transparent plastic housing as the crank shaft is manually turned. Kit consists of forty metal and plastic parts including necessary tools, instructions and battery. Non-operating engine 3 x 6 x 8". Ship. wt. 5 lbs.

**G 18-114 CLOCK BUILDING KIT** .....\$5.95  
(9 yrs. up)—A challenge for young hobby fans, this new kit tests the dexterity and develops the mechanical ability of youngsters so interested in what makes everything tick, yet is not too complex for young hands and minds. When finished, the result is a worthwhile electric wall clock in a mahogany finished plastic case  $6\frac{1}{2}$ " wide and  $1\frac{1}{2}$ " deep. A convex crystal for easy-to-read legibility from all angles covers the  $4\frac{1}{2}$ " dial. Each part is carefully identified with full instructions and detailed drawings. Assembling tool and special clock oil included. Operates on AC house current. Ship. wt. 3 lbs.



**H 4-25 CANNON CONST. SET** \$18.00  
(8 yrs. up) Imported. All pieces are bronzed metal. Most parts already intact so that assembly job is a very easy one. Guns average 4". Set consists of 4 artillery and 2 emplacement guns. Ship. wt. 6 lbs.





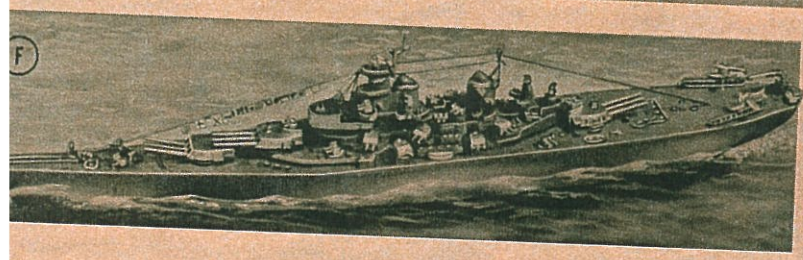
**12-15 AEROMITE AIRPLANE** ..... **\$9.95**  
 (12 yrs. up)—A ready to fly all plastic model plane with 17" wingspan, a real one cylinder engine and flight control unit. Plane is assembled from the ground. Stout linen threads attached to the elevator make it loop and stunt, come in for a perfect 3 point landing. Being all plastic, it's good for the green pilot. See Kit below. Ship. wt. 4 lbs.

**18-27 ACCESSORIES KIT FOR ABOVE PLANE** ..... **\$2.50**  
 Consisting of fuel, pouring spout, fueling tube, connector clip, wires & battery. Ship. wt. 4 lbs.

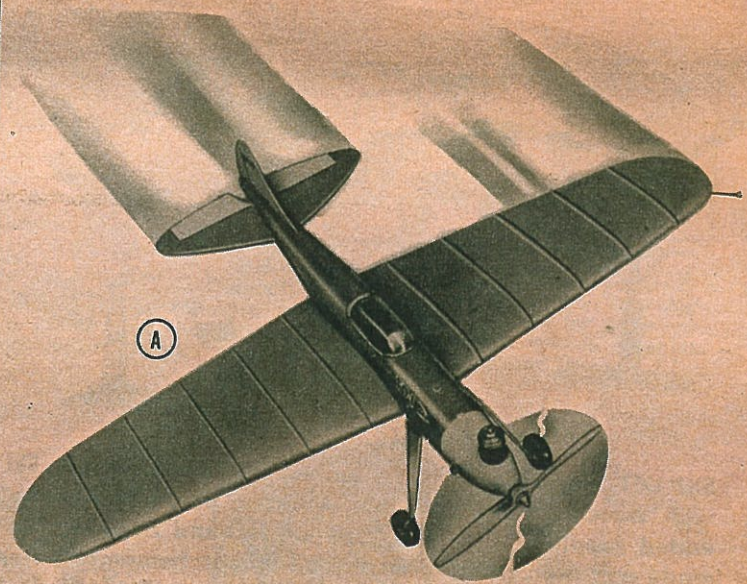
**19-42 AIRPLANE ASSEMBLY KIT (Imported)** ..... **\$4.50**  
 (10 to 10 yrs.)—A rather simple assembly assignment. All the parts are metal, colored red and silver, are joined by small bolts. To complete the 9' fuselage, wings, tail piece, struts, wheels, etc. are added to make either a non-flying monoplane or biplane with a rubber motor for turning the propeller. Ship. wt. 2 lbs.

**19-9 HELICOPTER KIT** ..... **\$4.00**  
 (12 yrs. up)—An easy to assemble 27 piece construction kit made of metal and plastic parts. When assembled, the non-flying realistic model is 15" long, 16 1/4" high with 17" rotor blade. Friction motor rotates the propeller as helicopter taxis. Has pilot, flexible landing gear, a stretcher, decals for decoration, tail propeller, side struts, and blue body. Ship. wt. 3 lbs.

**18-226 ADMIRAL'S FLEET KIT** ..... **\$6.95**  
 (12 yrs. up)—Hobbyists of all ages will enjoy this set of 5 authentic reproductions of famous U. S. Navy fighting ships. The vessels range from the 9" model of the menacing Torpedo Boats of the "Mosquito Fleet" to the 20" model of the battleship, U. S. Missouri—the "Mighty Mo" of worldwide fame. Others in the set are the atom-powered sub Nautilus, the destroyer Sullivan, and the heavy cruiser Los Angeles. The detailed scaled components of the deck and superstructure are assembled on the one-piece plastic hull and then painted. Paints, brush, thinner and cement are included with the 5 instruction sheets. The result is a colorful Task Force, easily recognized. Ship. wt. 3 lbs.

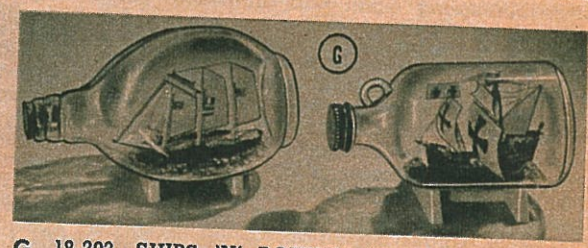
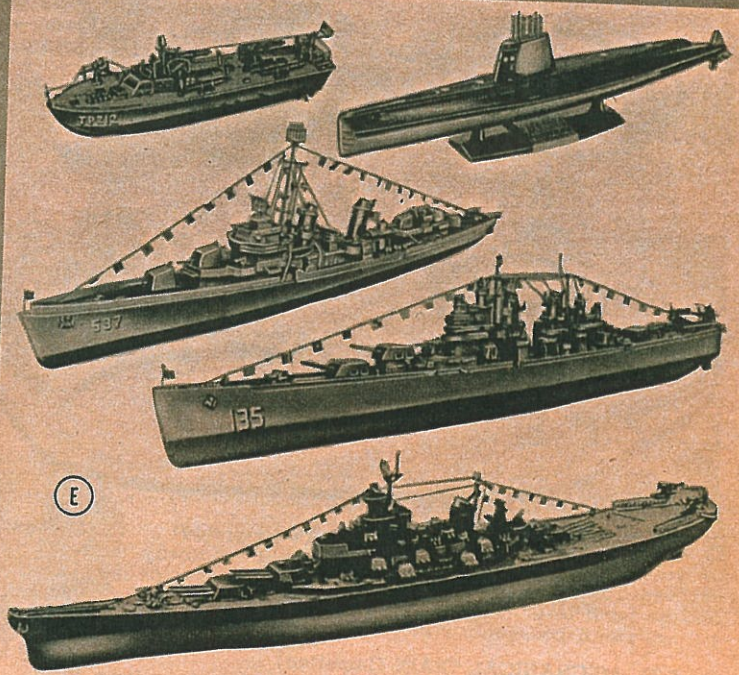


**18-78 ELECTRIFIED "BIG MO" Kit** ..... **\$4.95**  
 (12 yrs. up)—Here's the pride of the fleet! Powered with a ready assembled electric motor and counter rotating twin screws which drive her 20" length through the water at about 16 feet per minute, this authentic reproduction of the U. S. S. Missouri is fun to assemble and paint. Paint, brush, thinner and cement are included, along with detailed instructions. Beautifully molded in plastic and assembled as in kit above. Batteries not included. See below. Wt. 3 lbs. Set of 2 batteries required for above. **.25**



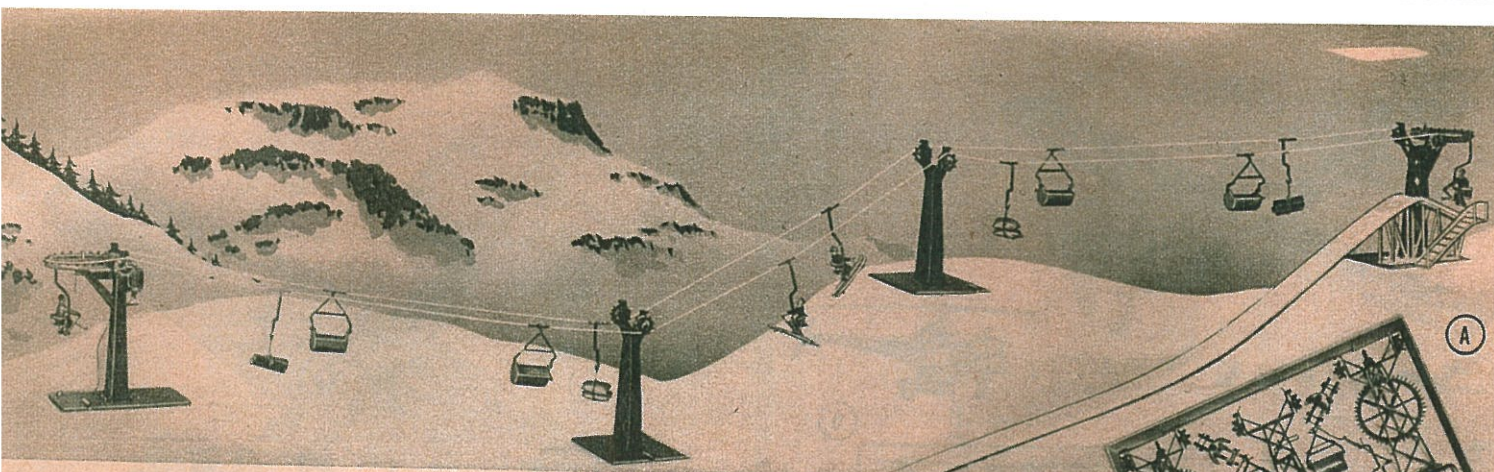
**A 40-255 THIMBLE-DROME TD1 PLANE** ..... **\$19.95**  
 (12 yrs. up)—Like all flying planes, the lines of this model are sleek, clean and graceful. From take-off, to stunting, to landing, it is something for all ages to enjoy. Attached to the 18" plastic fuselage are the aluminum wings of 24" spread and it is powered by a .049 "Space Bug" combustion motor. It is ready to fly. For controlled flying, two nylon lines lead from the plane to a plastic unit with reel held in the hand. Equipment with fuel filler hose, battery wires, wrench and finger guard. Shipped EXPRESS ONLY. See kit below. Ship. wt. 7 lbs.

**18-27 ACCESSORIES KIT FOR ABOVE PLANE** Wt. 4 lbs. **\$2.50**  
 Consisting of fuel, pouring spout, wires and battery, etc.



**G 18-203 SHIPS 'N' BOTTLES** Wt. 2 lbs. .... **\$3.00**  
 (9 yrs. up)—The young hobbyist who can show off a ship in a bottle has something to crow about, and this set makes it easy. There's no carving and no sanding—the ships are all plastic. A miniature jug with the Santa Maria and a pinch bottle with a three-masted schooner provide two worthwhile projects that yield their own rewards. Also included are an assortment of paints, thinner, brushes and cord for rigging.

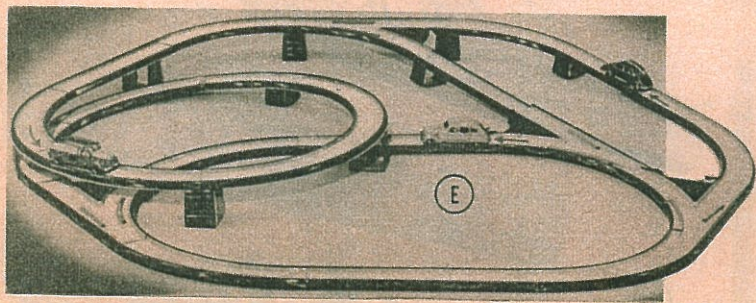
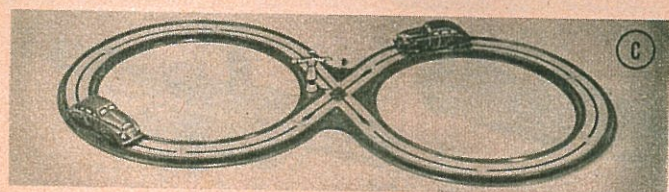
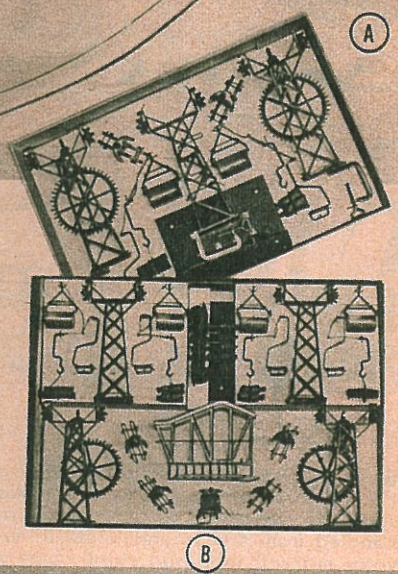




**SKI LIFT (Imported)**—(8 yrs. up)—A perfect miniature Ski Lift made of tough plastic with stanchions, gears, cable, buckets, hooks and chairs to transport skiers and their varied supplies to the top. One set is hand cranked, the other electric. Both are well made and are certain to inspire an indoor homemade slope on which the lift may be assembled for the absorbing sport of skiing. The skier's skis have small wheels for year round use. Orange stanchions with blue gears measure 5½" high. Generous supply of tough cotton cable included.

**A 18-325 SKI LIFT** Ship. wt. 5 lbs. .... \$12.75  
Hand operated. Has 3 stanchions plus two of each: hooks, buckets, chairs and skiers. Also bases and clamps to make steady for operating.

**B 18-329 SKI LIFT** Ship. wt. 10 lbs. .... \$25.00  
Operated by its electric motor from battery (included) or transformer. A more elaborate set consisting of four skiers, a skiing run, 4 stanchions plus additional hooks, buckets, chairs, etc.

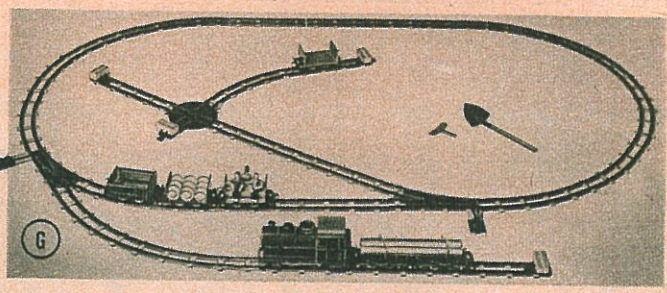
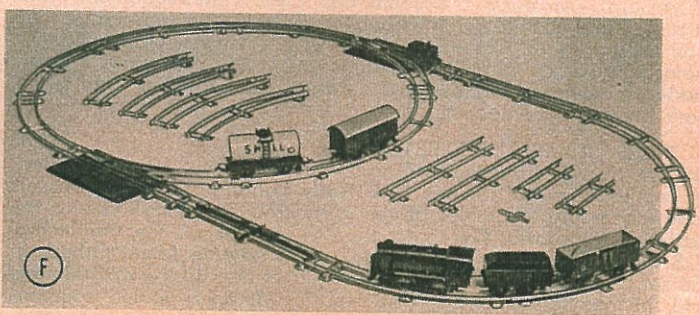
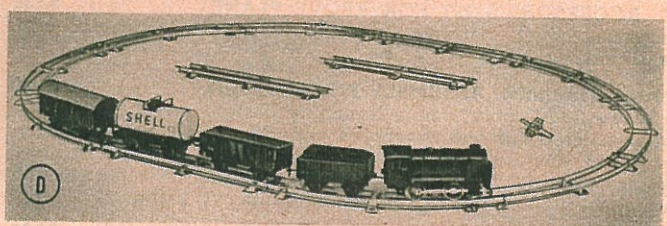


**C 4-8 MECHANICAL AUTO ROADWAY (Imported)** ..... \$3.75  
(4 yrs. up) — An all metal figure "eight" roadway made of grooved track measuring 28" overall. At the crossroads is a stop and go hand lever to control the traffic of the two spring driven 4½" all metal passenger cars. Ship. wt. 3 lbs.

**D 4-30 MECHANICAL TRAIN (Imported)** ..... \$8.00  
(4 yrs. up)—This excellent set is sure to give the young train dispatcher much pleasure. The set features a locomotive with reversible spring motor and adjustable speed control, tender, gondola car, Shell oil tank car, box car, plus 4 straight and 8 curved track, making a 30 x 48" oval. Ship. wt. 5 lbs.

**E 20-282 LARGE TRAFFIC LAYOUT (Imported)** ..... \$10.00  
(4 yrs. up)—This set contains material for building many (one at a time) varied and intricate connecting roadways. By manipulating the hand-operated switches, traffic can be diverted from one roadway to another. Raised sides of the metal sections keep the cars from going off the roadway on the hairpin turns and overpass. Spring motors power these three fast moving little (3½") cars. Largest layout approximately 40 x 40". Ship. wt. 6 lbs.

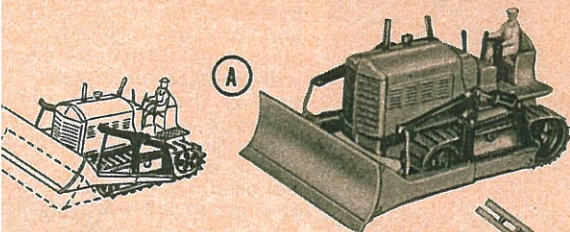
**F 12-38 UNCOUPLING TRAIN SET (Imported)** Wt. 7 lbs. \$12.95  
A very handsome wind-up train set providing all the fun of model railroading for the pre-electric train age group of 4 to 5 years. It is the only set of its kind combining all the features of reversible spring motor, automatic speed control regulator, brakes, coupling and uncoupling. Engine and tender, oil tank car, box car, gondola car, straight and curve tracks, 18 pieces in all, a starting and stop rail and one pair of switches included.



**G 20-251 WORK TRAIN (Imported)** ..... \$14.75  
(4 yrs. up)—A perfect miniature work train of top quality. The stubby diesel type locomotive is powered by a strong wind-up spring driven motor. It has controls for reversing its direction, for stopping and also starting it. It can easily pull the flat-car, gondola-car, oil-car with barrels, work-crew-car with three figures, and the lumber-car with its load of timber. The 51" oval layout includes 2 hand-operated switches, bumpers, hand-operated turntable and shovel. Rails are realistically spiked to wooden cross ties. Ship. wt. 5 lbs.

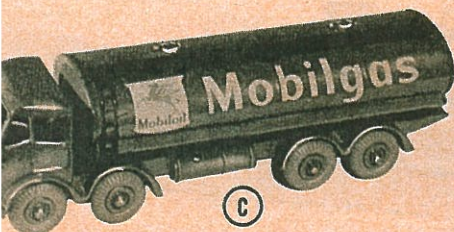


# DINKY TOYS



(A)

**2-129 BULLDOZER** .....\$3.95  
scale model of the famous English Blawox machine; blade is raised by pulling back lever which locks in position—lowered by pushing lever forward. Realistic creeper track. Enamelled red, cylinders and actuators black. 5½" long; scale 11/32" to 1". Ship. wt. 2 lbs.

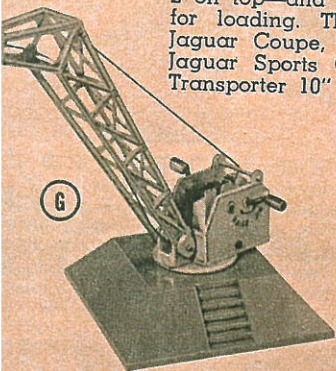


(C)

**2-229 MOBILGAS TANKER** .....\$3.00  
famous Foden 14-ton Tanker made more active by the addition of the well-known Mobilgas. The body and cab are enameled in bright red, while the ladder and tank along the top of the tank are in black. 10" long. Ship. wt. 2 lbs.

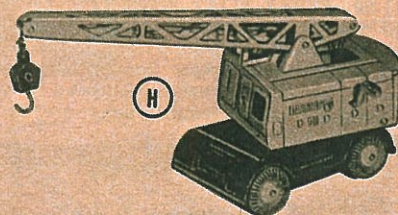
## F 2-14 PULLMORE CAR TRANSPORTER

.....\$7.95  
An accurate model of the well-known vehicles used by manufacturers for conveying cars from factory to destination. It carries 4 Passenger Cars—2 inside and 2 on top—and has a hinged rear ramp for loading. The cars are the Riley, Jaguar Coupe, Austin Convertible, and Jaguar Sports Car, and are about 3" long. Transporter 10" overall. Ship. wt. 3 lbs.



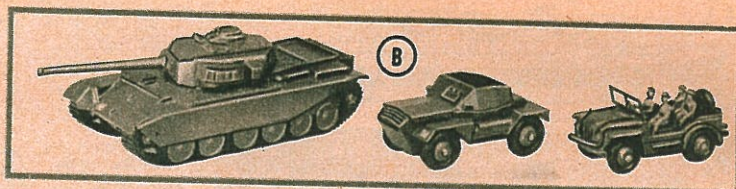
(G)

**531 YARD CRANE** .....\$3.50  
heavy base provides stability when crane is turned around to any position. The jib can be raised or lowered by a handle and there is a hook attached to a rope which can be raised or lowered by means of a second handle. Can be used with O-gauge train layouts. 10" high. Ship. wt. 2 lbs.



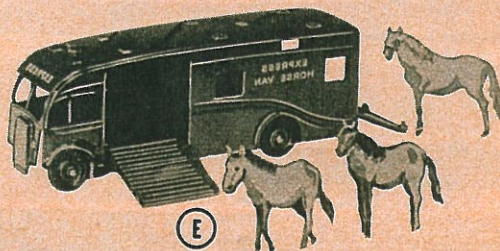
(H)

**H 2-456 MOBILE CRANE** .....\$3.50  
A splendid 7½" model of the English Coles Mobile Crane; this crane's jib can be raised or lowered by turning one crank handle and the load by turning another. Super-structure rotates. Enamelled metal, with rubber wheels. Operator sits in cab. Ship. wt. 2 lbs.



(B)

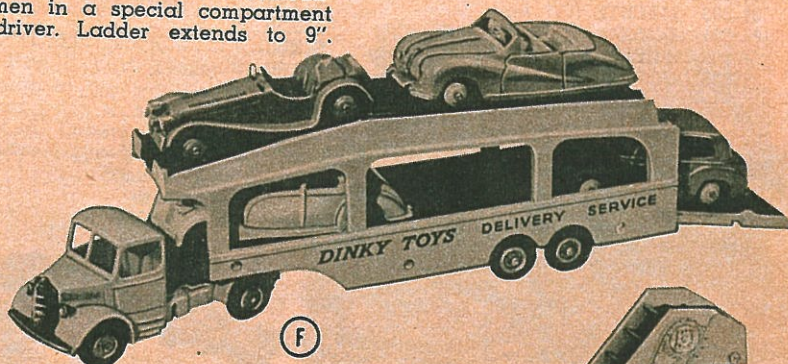
**B 2-147 CENTURION TANK & MILITARY CARS** .....\$4.85  
Exciting model of the famous 52-ton 25 m.p.h. Centurion Tank with swiveling turret and creeper tracks; Scout Car as used for reconnaissance patrol work, and Austin Champ all-purpose vehicle complete with driver and spare wheel. Has in all 6 sitting figures. Ship. wt. 2 lbs.



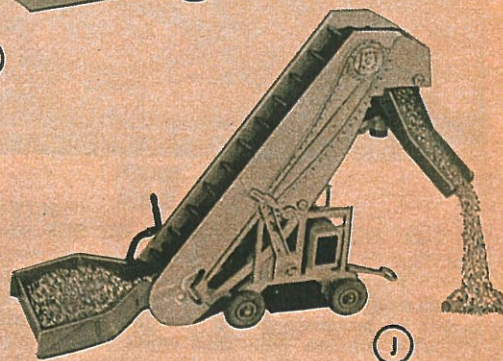
(E)

**E 2-454 HORSE VAN** .....\$4.15  
A detailed model of a modern Horse Van richly enameled in maroon with gold lettering. Interior is divided into two compartments which are entered by ramps from side and rear. Length overall with ramp down 8¼". Complete with three horses. Ship. wt. 2 lbs.

**D 2-450 FIRE ENGINE** Wt. 2 lbs. ....\$2.50  
The Fire Engine and water tender with extending ladder has every detail, from a reel of hose to the pumps. There are accommodations for firemen in a special compartment behind the driver. Ladder extends to 9" 5½" long.



(F)



(J)

**J 2-455 ELEVATOR LOADER** .....\$5.00  
A model of the Barber Greene Olding Elevator Loader, full of action. Loading scoop with removable back is raised and lowered by a lever; the endless rubber belt is rotated by turning a handle at the side and the delivery chute turns on a swivel. Brightly enameled, in yellow and blue with black endless belt. Overall length 9", height 6". Ship. wt. 2 lbs.



(K)



**K 2-451 RACING CARS** Ship. wt. 2 lbs. ....\$3.75  
Set of 5 famous Racing Cars includes the Ferrari, a name used in international motor races; the H. W. M., finished in light

green, the Maserati, a scale miniature in the racing colors of Switzerland; the Cooper Bristol with its long hood and realistic exhaust pipes plus the Talbot Lago-Racer. Each approximately 3½" long.