



AMERICA'S FAMOUS TOY CHILDREN

Billy and Ruth



1963



FENSTERMACHER & SON

Phone: 683-3541

KUTZTOWN, PA.

HARDWARE - TOYS - GIFTS - APPLIANCES

LIBERTY
Trustworthy
STORES

FRIENDLY AND COURTEOUS SERVICE



All Little Girls will just Love these Dolls . . .

A—17 IN. WALKING NURSE TODDLER DOLL: She has moving glassine eyes, lashes, rooted hair, and wears rayon stockings, vinyl shoes, and realistically designed nurse ensemble. She carries a baby doll wrapped in a blanket. Fully jointed.
No. 8517 By Roberta **4.94**

B—15½ IN. TODDLER DOLL: Has moving eyes, rooted snowball bob hair, movable arms and legs. Her navy and white polka dot taffeta dress has cotton puffed sleeve blouse and is trimmed with edging and ribbon belt. Panties, shoes, and socks. Vinyl and poly.
No. 6571 By Eegee **4.14**

C—19 IN. TWIN PONY TODDLER: A lovely doll wearing a rick-rack trimmed cotton dress, shoes and stockings. All vinyl, fully jointed toddler . . . long rooted double ponytail hairdo . . . beautiful sleeping eyes.
No. 1904-33 By Uneeda **6.57**

D—20 IN. RUTH DOLL: Dressed in a flannelette sweater and simulated corduroy skirt . . . wears knit panties, rayon stockings and vinyl shoes. All vinyl plastic. Rooted hair in a long "curly-tie-back" style hairdo. Turning head.
No. 5502 By Horsman **5.96**

E—17 IN. BABY BUTTERCUP: So like a real "life-like" baby that it is startling! All vinyl. Soft, baby-like, chubby arms and legs. Drinks! Wets! Turning head. Coo voice. Sleeping glassine

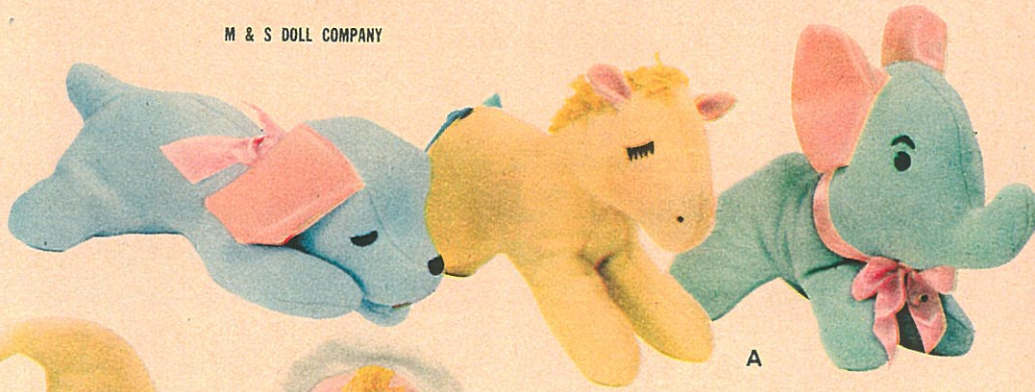
eyes. Fully jointed. Rooted hair in a "Wispy Baby" style hairdo. Dressed in printed flannel nightgown, panties and booties. With nursing bottle.
No. 2495 By Horsman **4.94**

F—16 IN. CO-ED DOLL with WARDROBE ENSEMBLE: Teenage fashion doll is smartly dressed in a cheerleader's costume. Her glassine eyes and lashes move . . . her hair is rooted. Her ensemble consists of vinyl hi-heel shoes, plastic handbag, slacks, scarf, jacket with hood, skirt, and printed percale blouse. Fully jointed.
No. 1575 By Roberta **7.87**

G—18 IN. POOR PITIFUL PEARL: Change "Poor Pitiful Pearl" from a waif to a glamour girl . . . instructions included. Long rooted hair can be put up in many different styles. Fully jointed. Dressed in patched cotton print dress, kerchief, long stockings, panties and shoes. She owns a lace trimmed nylon party dress, taffeta slip, white shoes, socks.
No. 54301 By Horsman **7.77**

H—17 IN. SNUGGLE SOFTEE with LAYETTE: Soft, life-like chubby arms and legs make her look like a real baby. Dressed in lace trimmed embossed cotton sunsuit. Hair is rooted in a "Pixie" hairdo. Sleeping glassine eyes. Voice. Complete with cotton dress and matching bonnet, bed jacket and matching diaper, booties, extra diaper, sponge.
No. 64303 By Horsman **5.93**

The prices in this book are suggested prices only—for current prices consult your dealer. In some places of the South and West prices may be slightly higher.



A



B

A—ACRYLIC FLEECE "Cuddly Soft" ANIMALS: New non-allergic washable acrylic fleece animals are filled with soft foam rubber. Ears of marshmallow-plastic—perfect for teething. Choice of Dog, Horse, Elephant.

No. 320 By M & S **1.77 EA.**

B—ACRYLIC FLEECE "BABY'S FRIEND" INFANT DOLLS: Safe, sanitary, foam filled dolls are soft, cuddly with plastic hands for teething. Non-allergic washable Acrylic Fleece. Choice of Baby Doll, Clown.

No. 400 By M & S **2.74 EA.**



C

EEGEE DOLLS

C—12 IN. MUSICAL BABY DOLL: Wind-up Brahms lullabye music box enclosed in her back, and she will move her body and rotate her head. Cotton stuffed, vinyl head and curved arms and legs, moving eyes, rooted pixie hair, white cotton dress trimmed with lace.

No. 1232M By Eegee **4.76**



D

UNEEDA



E

Horsman

D—21 IN. BABY SWEETUMS—DRINKS AND WETS: Drinks from a baby bottle—wets, too! All vinyl, fully jointed baby . . . hair is rooted . . . has sleeping eyes. Wears a lace trimmed nylon party dress and booties.

No. 910-4 By Uneeda **5.66**

E—17 IN. SNUGGLE SOFTEE with MAMA VOICE: She calls for "Mama." Realistically sculptured head. Soft, baby-like chubby arms and legs. Sleeping glassine eyes. Rooted hair in a "Pixie" style hairdo. Dressed in beautiful organdy dress with bonnet.

No. 6432 By Horsman **5.97**



F

EEGEE DOLLS



G

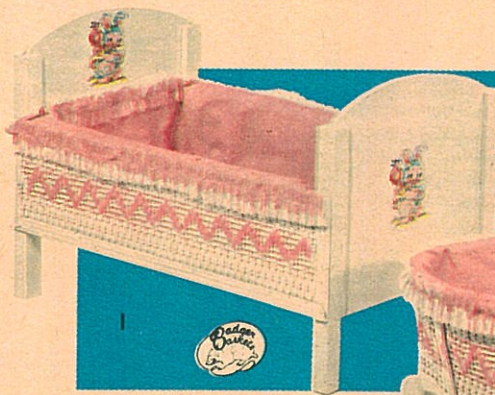
Valentine

F—16 IN. NEWBORN BABY DOLL: Resembles an adorable newborn infant. Dressed in diaper, pink cotton dress, white fleece jacket and booties. Cloth body, cotton stuffed, vinyl head, and curved arms and legs, moving eyes, rooted pixie hair.

No. 4671 By Eegee **4.94**

G—12 IN. DRINK and WET BABY DOLL: Dressed in a lovely little party dress, shoes, panties and hat. Has movable arms, legs and head, and go-to-sleep eyes. Rooted hair can be washed, waved and set.

No. 8202 By Valentine **2.87**



Everything for the Little Mother...

A—BIG 'N LITTLE DIAPER BAG SET with MAGIC NURSER: Consists of 2 printed satchel diaper bags (1 big, 1 small), Magic Nurser with disappearing milk, waterproof plastic panties, bib, absorbent diaper with safety pins, milk bottle, feeding bowl, spoon, sterilizer pot and lid, 6 nursing bottles and sterilizer rack.

No. 202 By Miner **2.86**

BABY CARE DIAPER BAG SET: Smaller set than above.

No. 101 By Miner **1.83**

B—WONDER PERK with PLAY STOVE: Just add water and it actually perks! No moving parts, no wire or batteries—based on a scientific principle. Stops itself when coffee is ready.

No. 1830 By Amsco **2.44**

C—MAGIC BOTTLE LAYETTE SET: Everything "Little Mothers" need to care for dolly. Layette includes, 2 large size Magic Bottles—Pet milk, Minute Maid orange juice, bottle warmer, divided feeding dish, spoon, empty oatmeal box, vinyl bib, rattle, half orange, juicer, sponge, 2 Chix diapers, Ivory soap, diaper tongs, box diaper pure, 4 clothes pins and clothes line, box of Johnson's Q-Tips.

No. 1563 By Amsco **2.76**

MAGIC BOTTLE FEEDING & DYDEE SET (Not illustrated): Smaller version of the above set.

No. 1562 By Amsco **1.86**

D—COSCO HI-CHAIR with MAGIC BOTTLE FEEDING SET: Safe, all steel hi-chair with sliding feeding tray. Feeding set features: Pet milk Magic Bottle, bottle warmer, orange juicer, strainer and play orange, divided feeding dish, spoon, cereal box, measuring spoon and cup.

No. 1019 By Amsco **4.44**

E—"THE NURSES" PLAY AND DRESS-UP SET: Everything needed to keep "Dolly" in good health. Patterned after the famous TV show "The Nurses". Set contains: nurse's cape, apron and cap... plus nurse's safety miniature plastic instruments.

No. 673 By Standard Toykraft **2.72**

F—American Maid DOLL COACH: Attractively styled in white and trimmed in gold with decoration and crest on body. Folding hood and liner in quilt embossed gold vinyl. 23" high handle, 6" wheels, white tires.

No. 4165 By South Bend **9.78**

G—American Maid FOLDING DOLL COACH: Blue with white embossed gold vinyl trim. Collapsible frame. Full size, 23½" high handle. Complete with lock clips, mattress board, and easy moving 5" wheels.

No. 1330/6 By South Bend **2.93**

H—FOLDING STROLLER WITH SHOPPING BAG: Styled like the big ones. Red with red and blue print on white embossed vinyl. Full size tubular handle 29" high. Features: Polystyrene baby tray, fringed canopy, shopping bag, baby's footrest, spring lock clips, 6" wheels, red hub-caps.

No. 760 By South Bend **5.86**

I—18 IN. DOLL BED: Attractively designed doll bed with high sides so baby doll won't fall out. Size: 18 in. x 13 in. x 12¼ in.

No. 1915 By Badger **Priced For You**

20 IN. BED Also Available No. 1920

J—16 IN. CRADLE with HOOD: Little Mother can safely rock their dolls to sleep in this practical, basketweave cradle. Plastic lined cradle with hood is 16 in. x 9 in. x 14 in.

No. 310 By Badger **Attractively Priced**

21 IN. CRADLE Also Available No. 315



A—GIFT LAYETTE TRAY: A complete layette set with reusable styrofoam nursery tray. Included: 2 milk bottles, 4 nursing bottles (2 small, 2 large — 1 small orange juice colored, 1 large milk colored) absorbent diaper with safety pins, 2 plastic spoons, funnel, saucepan, tumbler, feeding bowl, rattle, soap, bottle carrier, cotton buds, napkin and baby gift card.

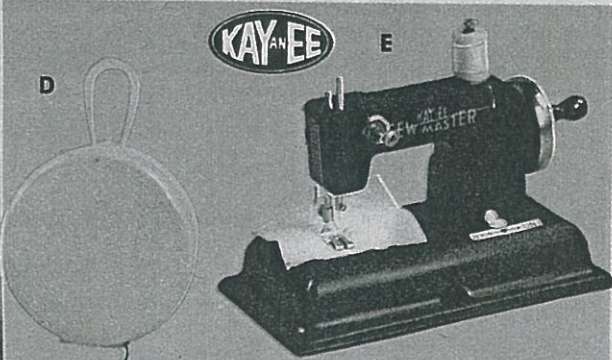
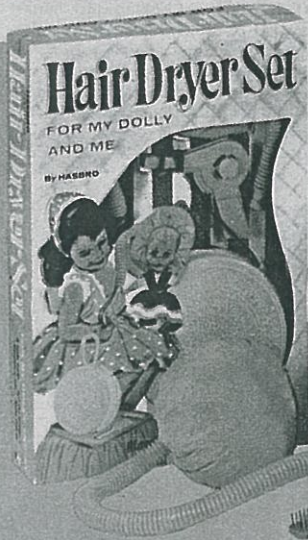
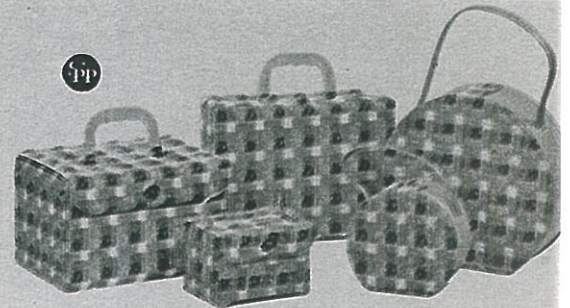
No. 1135 By Miner **1.84**

B—JUNIOR FASHION 5 PC. PLAID LUGGAGE SET: A touch of elegance for the young travelers. All vinyl, contrasting lining, matching handle. Fully washable. 5 piece quality set fills every need of the junior sophisticate on the go.

No. 50 By Standard Plastics **4.84 SET**

C—TAMIE AND HER MODEL KIT: Pearl colored model kit set consists of: 3 piece mirror, brush and comb set, manicure implements and scissors, 3 piece compact set, play nail polish, lotion, cologne and Tamie Hat box.

No. 3504 By Standard Pyroxoloid **1.92**



D—LITTLE MISS HASBRO HAIR DRYER SET: For little girls and their dolls, hair-dryer set complete with carrying case and battery operated blower (batteries not included). Blows safe, cool air. Also includes comb, brush and instructions.

No. 1934 By Hassenfeld **3.92**

E—BATTERY OPERATED SEWING MACHINE: Sews like Mother's. Safe to operate. Sews strong chain stitch. Has automatic clutch for hand operation and to preserve life of batteries (not included). It's threaded . . . ready to sew. Fully guaranteed. Precision built, sturdy steel construction.

No. 725 By KAY an EE **6.93**

HAND OPERATED SEWING MACHINE: Safe, educational, practical.

No. 554S By KAY an EE **3.96**

F—NECCHI SEWING MACHINE SET: Toy Necchi sewing machine is factory tested and backed by Hasbro warranty. Complete with carrying case, dresses, material, needle and thread, and scissors for making stunning outfits for the enclosed doll.

No. 1543 By Hassenfeld **3.67**

G—Cathy goes to the PROM COSMETIC SET: Features a quality vinyl handbag plus assorted grooming needs, brush, comb, cologne, talc, puff mitt and a squeeze bottle dispenser.

No. 1970 By Hassenfeld **2.76**



Barbie® every Girls Favorite

H—"BARBIE AND ME" VANITY SET: Teaches good grooming. 10 piece set consists of mirror, brush and comb, 3 piece compact set, real vanity table with compartments for Barbie, adjustable mirror, and 3 piece dresser set with Barbie picture back designs. Satin Pearl colors.

No. 3450 By Standard Pyroxoloid **1.94**

BARBIE VISITS NEW YORK VANITY SET: (Not illustrated) 11 piece vanity set.

No. 3440 By Standard Pyroxoloid **97¢**

I—BARBIE AND MIDGE DOLL CASE: Fashion doll case and wardrobe combination. Molded insert holds 2 dolls, clothes and accessories. Pockets built into the cover for more accessories or children's clothes.

No. 300 By Standard Plastics **4.92**

J—BARBIE, KEN AND MIDGE FASHION EMBROIDERY SET: Barbie and Ken are joined by a new friend, Midge. Set features colorful, all-occasion cut out costumes which adhere to the stand-up dolls plus embroidery needle, thread, safety scissors and instructions.

No. 503 By Standard Toykraft **2.76**

BARBIE AND KEN FASHION EMBROIDERY SET: (Not illus.)

No. 502 By Standard Toykraft **1.84**





"ELECTRIC" PARTY PERK SET: Service for 4 . . . permits li'l hostess to entertain in elegant style. Set contains 4 ea. cups, saucers, spoons, napkins, 1 party perk, and 1 tray. Rustproof aluminum.
No. T-0256 By Mirro-Aluminum **2.94**



COOK and BAKE SET: For real baking and "make-believe" cooking. Set contains, muffin pan, saucepan, layer cake pan, mixing bowl, fry pan, pie pan, cooky sheet, Brillo, 2 measuring cups, and 3 cookie cutters. Rustproof aluminum.
No. T-0157 By Mirro-Aluminum **1.97**

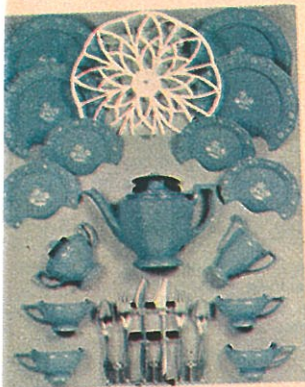
Hours of Fun for "Make-Believe" Homemakers

31 PC. BLUE IRONSTONE TEA SET: Patterned after world famous English china. Dainty white embossed border decorations enhance the rich blue color. Break-resistant polystyrene. Service for four.
No. 334 By Worcester **2.92**

25 PC. BLUE DAISY TEA SET: Decorated in gay Blue Daisy design . . . modern styling and refreshing color scheme will please any little hostess. Break-resistant polystyrene. Service for four.
No. 424 By Worcester **1.94**

23 PC. PATIOWARE DINNER SET: Modern design set features different sizes of Patioware covered servers plus skillet, percolator and warming stand. Gay printed decorations. Break-resistant polystyrene.
No. 1223 By Worcester **2.94**

SWANS DOWN CAKE MIX SET: Contains: 10 real food mixes . . . 6 Swans Down Cake mixes, Decorator mix and 3 frosting mixes . . . plus 2 cake pans, loaf pan, muffin tin, mixing bowl, measuring spoon, decorator and 2 nozzles, and recipe book.
No. 6213 By Argo **2.92**
SMALLER CONTENT CAKE MIX SET
No. 6212 **1.87**



CHILTON HOUSE "ELECTRIC" COFFEE MAKER SET: Play electric coffee maker with see-thru cover set contains: 2 large plates, 2 saucers, 2 forks, 2 knives, 2 cups and 2 spoons. Aluminum.
No. 3443 By Aluminum Specialties **1.94**



CHILTON HOUSE "ELECTRIC" FRY PAN SET: Contains play-electric Fry Pan large and small Windsor sauce pans, double boiler with see-thru covers, plus angel food cake pan and pie pan. Aluminum.
No. 3446 By Aluminum Specialties **2.97**



A—TWIN APRONS EMBROIDERY SET: Make them, wear them . . . one for mother, one for daughter. Simple, easy to follow instructions.
No. 269 By Davis **1.87**
B—CAMPUS KNIT: Colorful carrying case contains 13 balls of colored wool, needles, and knitting spools.
No. 334 By Davis **1.94**
SMALLER CAMPUS KNIT SET 97¢



C—ADJUSTABLE METAL WEAVING LOOM: Weave bags, mufflers, sweaters, pot holders. Loopers and yarn included.
No. 602 By Davis **1.97**
SMALLER ADJ. METAL WEAVING LOOM SET No. 600 94¢
BOX OF LOOPERS (For Weaving on a loom set) No. 100 94¢