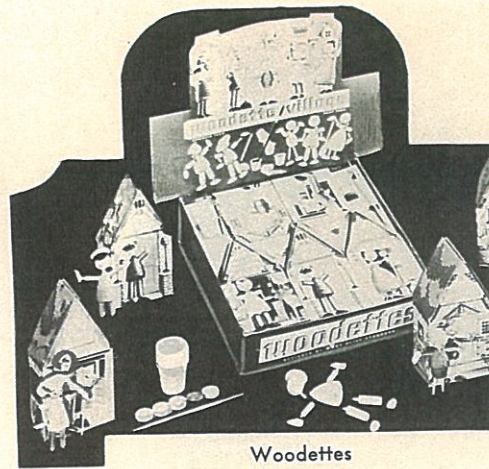
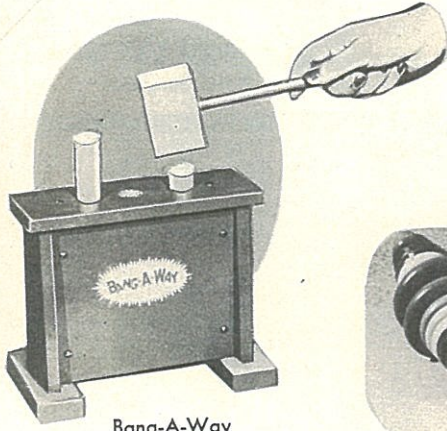


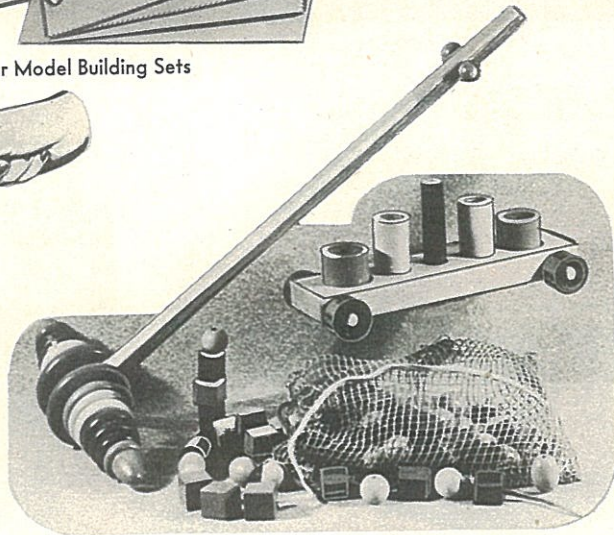
Architector Senior Model Building Sets



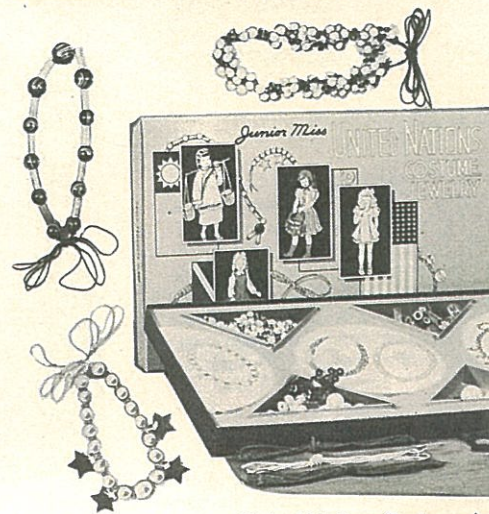
Woodettes



Bang-A-Way



No. 11-48 Educational Group No. 5



United Nations Costume Jewelry



Story Book Blocks

No. 10-3—Bang-A-Way—For sheer fun and stimulation, here is something that will give youngsters much joy, when they take

the wooden mallet in hand and bang away. The child by pounding a peg into a hole caused another peg to appear from the opposite hole. It gives the youngster practice in muscular control and eye-hand coordination. Sturdily built and complete with light wooden mallet. Shipping weight 5 lbs. . . . . \$2.00

No. 9-29—Story Book Blocks—A very versatile toy for nursery age children. Each book or block is solidly made of wood with the front and back covers hinged together making, when closed, a book measuring 1 x 4 3/4 x 5 3/4". There are 8 colorful books in each set with a colored picture and rhyme or story on each of the 4 surfaces of each book—32 pages in all. It's a library that can be turned into bridges, tunnels, houses, chairs, tables, etc., in endless array since the books open up and are rigid in an endless variety of angles. Shipping weight 5 lbs. . . . . \$6.50

No. 9-44—Woodettes—Putting together and then painting the Policeman, Farmer, Johnny, Maid, and Grocer will prove to be not only fun but educational as

well. Each figure averages 4" in height and is made out of hard white birch turned and bored to dimension assuring perfect fit and balance. The set includes a house for each doll, 5 special water paints with brush and finishing. Shipping weight 4 lbs. . . . .

Architector Senior Model Building Sets—As teen age boys and girls will find it a challenge to plan as the architect and then construct these easy-to-build sets. No experts are necessary. Instructions are clear and concise. After it has served its purpose, it can be dismantled and reclaimed for the construction of another very interesting story of "How Architecture is Made." A well known architect is included with the set. Model bricks, cement, lumber, wind

No. 11-61—Small Set—Packed in hard slide cover, 12 x 18 x 3 3/4". Shipping weight 10 lbs. . . . .

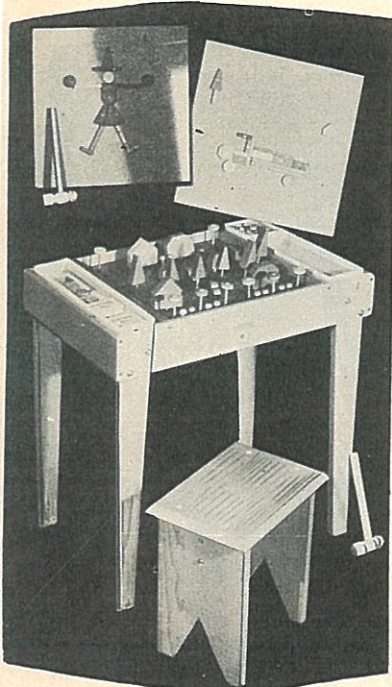
No. 10-9—Medium Set—Packed in hard slide cover, 12 1/2 x 16 x 2 1/4". Shipping weight 10 lbs. . . . .

No. 11-30—Large Set—Packed in hard slide cover, 12 x 18 x 3 3/4". Shipping weight 10 lbs. . . . .

No. 11-31—De Luxe Set—Packed in hard slide cover, 12 x 21 x 3 3/4". Shipping weight 10 lbs. . . . .

No. 11-48—Educational Group No. 5—Educational toys to keep the small youngster busy and happy. This group consists of: **Baby Push**—A push toy to encourage the one year old to take his first steps and a "take-apart" toy as he grows older. **Nesting Cup Cart**—Each piece fits into the other. Once a youngster learns, the nesting cup cart becomes a favorite. **Kindergarten Beads in Bag**: Large wooden beads that children can't swallow. Colors are bright and harmless. Large holes and strings with extra long tips insure easy stringing. Shipping weight 7 lbs. . . . . \$3.95

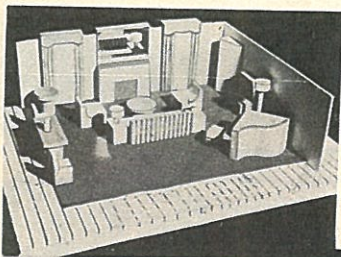
No. 9-67—United Nations Costume Jewelry—You will find it very easy and great fun to make each lovely necklace in this set—one for each of the four great United Nations—United States, Great Britain, Russia, and China. The thought that one has made the necklace will add a great thrill. Directions are shown on the inside of box cover. The 11 x 17" box contains the necessary material. Shipping weight 4 lbs. . . . . \$2.00



Hammer-Nail and Peg Table



Plantcraft Set



Plan-A-Room



Charlotte Steiner's Story Book Theatre



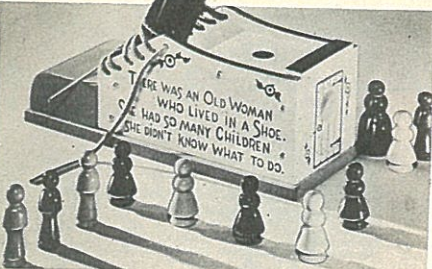
Who has been sleeping in my bed?  
Who has been sleeping in my bed and rumpled all the bedclothes?  
Who has been sleeping in my bed and—  
he catches sight of Goldilocks  
Oh! Oh! Come quickly! Mama! Papa! Look, there she is!

Mama and Papa Bear rush over to the little bed.

MAMA BEAR: Land sakes, a little girl! And she's sound asleep!

PAPA BEAR: Well! Well!

The bears are so surprised, they forget to roar. Baby Bear forgets to cry. They just stand and stare at Goldilocks.



Old Woman of the Lacing Shoe

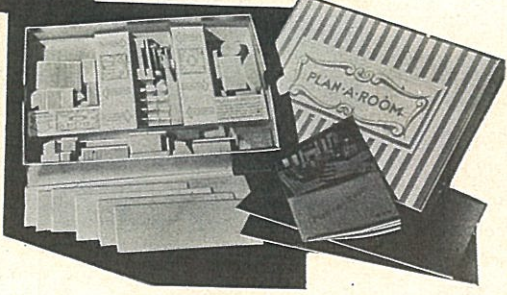
No. 11-59—Old Woman of the Lacing Shoe—A colorful wooden shoe for children to lace and unlace to their hearts' content. Has 10" blue sole, white sides, blue lacer with red tongue. Unlace the shoe and the red tongue swings forward disclosing 12 small wooden figures and a larger one, representing the "Old Woman" and her numerous children in their house inside. Shipping weight 3 lbs. \$2.00

No. 6-8—Plantcraft Set—Included in the 19 x 11 x 4" box are all the materials and chemicals needed for the growth of plants without soil. A 12-page booklet reveals how it is done by either water or sand culture—so simple that any child old enough to read can follow the step-by-step process of growing vegetables and flowers in this amazing way. The set consists of 4 brightly colored clay pots with saucers, sterilized sand and litter, nutrient chemical, and 5 packages of assorted seeds. Shipping weight 6 lbs. \$2.00

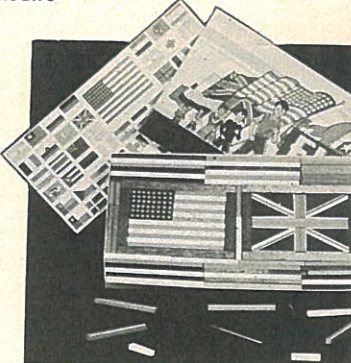
No. 3-40—Plan-A-Room—Originated by Paul R. MacAlister, internationally-known interior decorator. With this set one can redecorate and re-furnish any room in the house on a small scale and most inexpensively. It is all done on an 11 x 16" wooden block, scored in both directions so that walls may be set at variable distances. Windows and doors can be in effect set in place while the furniture, made simply of unpainted wood and in a large variety for all rooms, can be moved about until the desired balance has been achieved. Then the decorative touches are supplied with scraps of cloth or colored paper. It's a lasting, original and constructive pastime. Shipping weight 7 lbs. \$5.00

No. 3-60—Special Wall Paper—(small design) per package \$ .50

No. 40-85—Hammer-Nail and Peg Table—It's a happy experience for a child to make town and country scenes with these wooden trees, houses, flower tops, cars, automobiles, garages, and other shapes in this set. Each is beautifully lacquered in bright colors, and has holes drilled in them through which the various pegs



Animal Model-Craft Molding



Flag Stix



Spell It

fit to hold them in place. For constructive designing and the sheer fun of hammering, there are two 1 1/2" square composition pounding boards, liberal supply of laying sticks, dots, blocks, wheels and trees in various sizes, shapes and colors, two wooden hammers and nails. The wooden table and stool are sturdily built and lacquered in maple finish. Table measures 12 1/2 x 19 1/2 x 19 1/2" high. Shipping weight 12 lbs. \$5.50

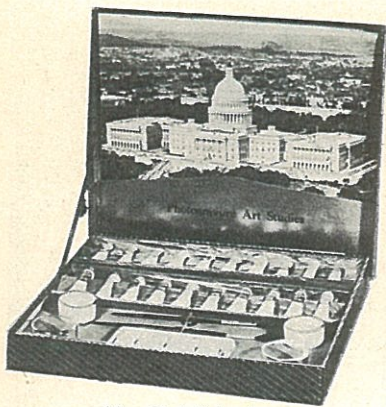
No. 10-78—Flag Stix—Flags of 53 different nations are made by fitting colored wooden pieces together inside a wooden frame measuring 4 x 6". For the more intricate insignia colored paper is supplied and used where necessary. A colored flag chart may be referred to for suggestions. Set may be used indefinitely and by all ages. Shipping weight 4 lbs. \$2.50

No. 9-68—Spell It—An outstanding educational toy. It spells, adds, multiplies and subtracts. Operated exactly like a telephone dial. Pictures of objects correctly spelled appear in the "Magic" doors. Of durable construction, the SPELL-IT game is educational fun at its best. Designed for children five years and older. Any

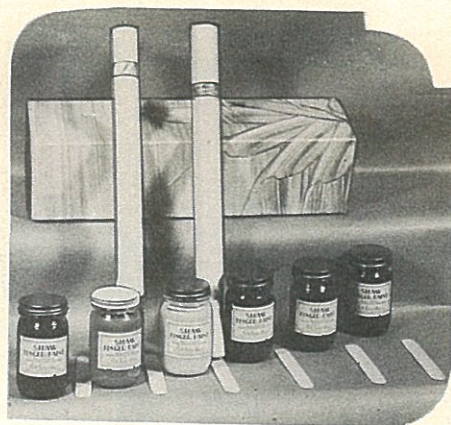
number of players will enjoy dialing the answers to their knowledge of spelling and arithmetic. Shipping weight 4 lbs. \$

No. 10-93—Animal Model Craft Molding—There are 5 flexible molds, Brer Rabbit, Penguin, Sheep, Brer Bear and Ducky Wucky, in this set into which creamy mixture of water and powder is poured and to harden. When hard, the rubber mold can be removed (rubber glove fashion) and the form allowed to then painted and mounted for ornamental purposes. The process can be repeated indefinitely. All materials included—powder, glass, spoon, paints and brush. A hobby having excellent creative and rainy-day value for adults and children. In an attractive box 12 x 18". Shipping weight 3 lbs. \$

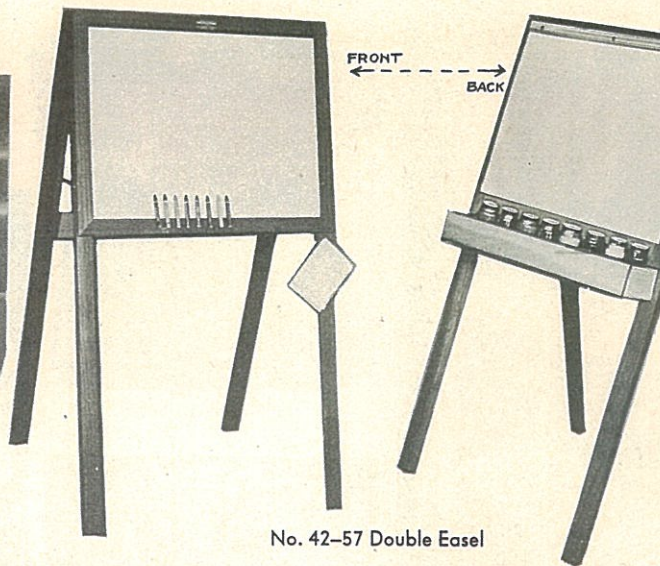
No. 11-60—Charlotte Steiner's Story Book Theatre—The ever popular children's fairy tales dramatized on a cardboard stage. The six favorite stories—Red Riding Hood, Hansel and Gretel, Little Black Sambo, Snow White, The Gingerbread Man, and the Three Bears—printed in pamphlet style with pictures of the scenes in each story. Shipping weight 2 lbs. \$1



No. 10-2 Paint Set



No. 9-23 Finger Paints



No. 42-57 Double Easel

**No. 10-2—Paint Set**—Twenty tubes of the 7 basic water colors, 2 point brushes, 2 glass jars, 2 mixing jars and enameled mixing tray all neatly arranged in the 12 x 11 x 2" handsome, hinged cover box. Also included are a mixing chart and outline pictures to color, an inspiration to the young artist for better work. Shipping weight 5 lbs. . . . . \$3.00

**No. 9-23—Finger Paints**—As the name implies, no brush is required. After the paint is spread on the proper paper two-tone designs can then be drawn with the finger tips in the fluid surface. The paints are, of course, non-poisonous and very soluble in water so that the clean-up job, after the fun is over, is not a hard task. A quantity of paper, 6 large jars of colored paint, 6 wooden spatulas and instructions, in a 3 x 4 1/2 x 16 1/2" box. Shipping weight 10 lbs. . . . . \$3.75

**No. 9-61 — Finger Painting Set**— So tremendously popular, we're including this finger painting outfit. Children as young as 4 "gloat" in spreading these paints lavishly on paper in grooves, waves or straight lines, and so making intricate and worthwhile designs, depending on the age of the artist. Paint is of course non-poisonous and will not spot or stain, and dissolves immediately in cold water. A quantity of special finger-painting paper, 6 cans colored paint, 6 wooden spatulas, and instruction book are nicely packaged in a 19 1/2 x 11 1/2 x 2 1/2" box. Shipping weight 8 lbs. . . . . \$2.00

**No. 4-55—Finger Paints (Not illustrated)**—As the name implies no brush is required. After the paint is spread on the proper paper two-tone designs can then be drawn with the finger tips in the fluid surface. The paints are, of course, non-poisonous and very soluble in water so that the clean-up job after the fun is over is not a hard task. A quantity of paper, 6 cans of assorted paints, 6 wooden spatulas and instruction book are nicely packaged in a 3 x 4 1/2 x 16 1/2" box. Shipping weight 7 lbs. . . . \$2.25

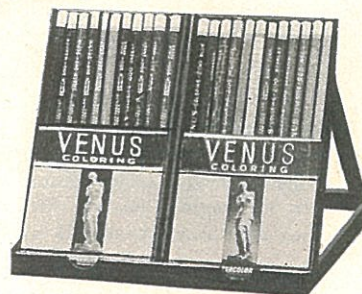
**No. 42-56—Kindergarten Easel**—Heavy maple frame, 48" high, with hinged legs, supports a 3-ply 20 x 26" wooden board on which a thick pad of special drawing paper is clipped and below which is conveniently located a deep tray containing 6 bottles of poster paints, 2 water jars and paint brush. Shipping weight 26 lbs. . . . . \$9.95

**No. 2-119—Mongol Pencils**—Twenty-four extra strong thin lead pencils in different colors ranging from Burnt Carmine to French Green. Can be used for water coloring as well. Shipping weight 1 lb. . . . . \$2.00



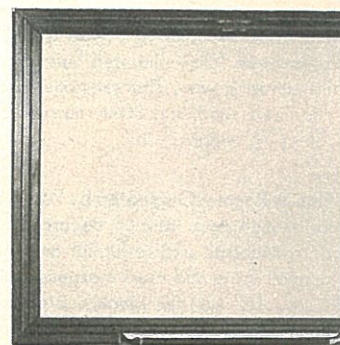
No. 9-61 Finger Painting Set

**No. 3-1 — Venus Pencils**—These fine quality pencils are appreciated by those who wish to use them to crayon as well as water color. The 24 assorted colored pencils come neatly boxed and fitted into an easel holder. Shipping weight 1 lb. \$2.00



Venus Pencils

**No. 42-4 — White Drawing Board**— This 26 1/2 x 20 1/2" white composition board with red wooden edge, is very popular with children because its special drawing surface is for colored crayon use, eliminating chalk dust and dirt, yet the drawings, which by the way stand out very distinctly against the white background, can be easily removed with the cloth which is included. The special crayons of 8 different colors, will not spot, stain or break when dropped. Board is for wall or desk use. Shipping weight 6 lbs. . . . . \$3.95

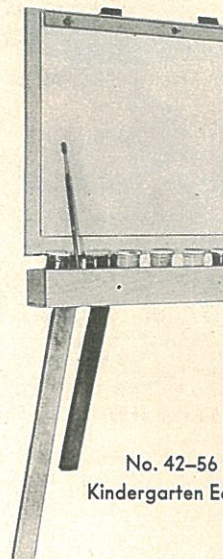


White Drawing Board

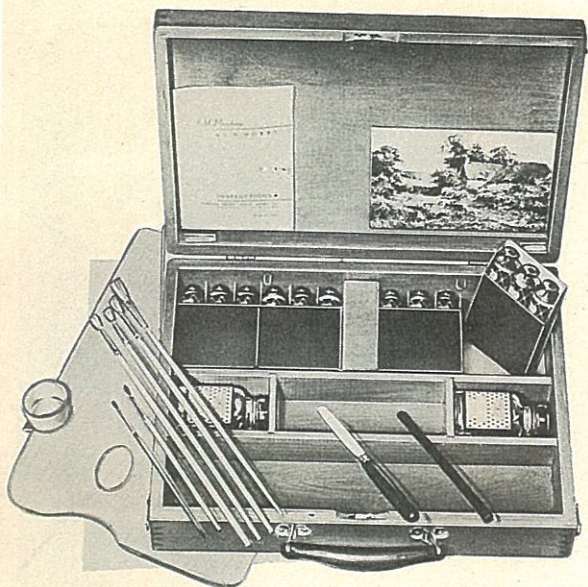
**No. 42-57 — Double Easel**— Drawing can be carefully or casually done. In any case, it's fun, especially when two can draw simultaneously. This double easel performs well for two artists, since it has a 3-ply 20 x 26" drawing board on one side of the 48" high hinged leg support with a large pad of drawing paper clamped at the top with tear-strip, besides having a tray of 6 jars of poster paints, 2 water jars and brush. On the other side is a 20 x 26" white composition board with red wooden edge. This is very popular with children because of its special drawing surface for colored crayon use. No chalk dust and dirt, yet the drawings stand out against the white background and they can easily be removed with a cloth. Includes special crayons of 8 different colors. Shipping weight 39 lbs. . . . . \$13.75



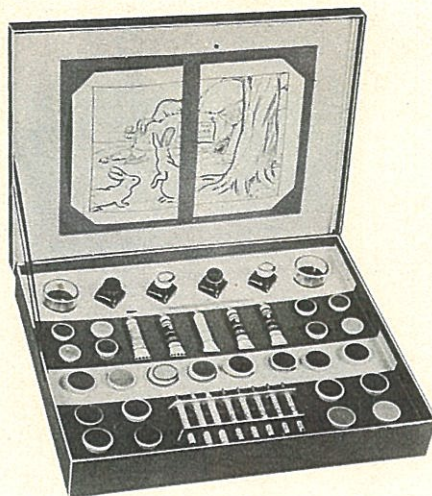
Mongol Pencils



No. 42-56 Kindergarten Easel



No. 10-13 Oil Paint Kit



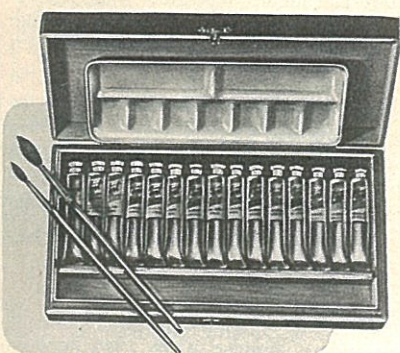
No. 9-22 Golden Glow Paint Box



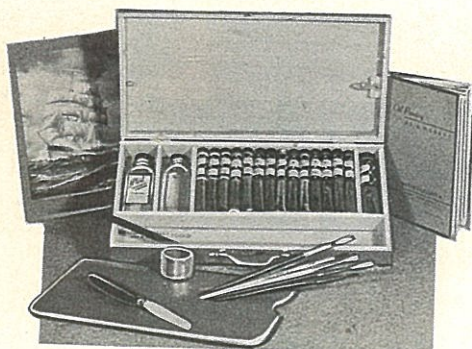
Brookside Color Kit

No. 10-13—Oil Paint Kit—Oil paint answers the almost universal desire for artistic expression. Whether it be in painting landscapes or in decorating household articles of design, this fine quality set has the necessary

equipment. The sturdy, hinged cover wooden case with handle is 15 1/4" and contains 11 large tubes of good quality paint, 1 tube of zinc oxide, 1 bottle each of linseed oil and turpentine, 6 brushes, palette knife and canvas board. Shipping weight 11 lbs. . . . .



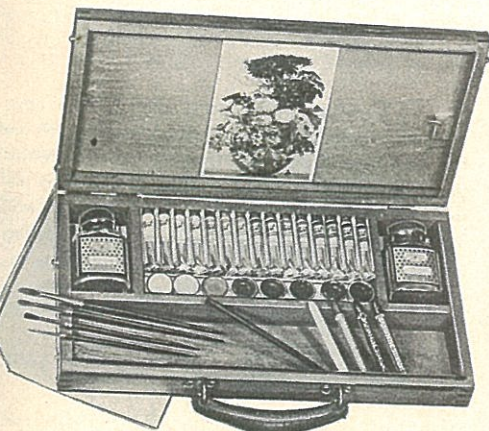
No. 9-27 Water Color Set



No. 9-43 Oil Paint Kit

No. 9-43—Oil Paint Kit—This outfit has the same good quality as the larger set. The strong hinged cover wooden case with handle is 6 1/2" x 1" and contains 14 small tubes of fine quality paint, 1 tube of zinc oxide, 1 bottle each of linseed oil and turpentine, 5 brushes, palette knife and heavy piece of cardboard. Shipping weight 5 lbs. . . . .

No. 9-27—Water Color Set—Fifteen 3" tubes of Hi-test artists colors, selected for their permanency and mixing qualities packed in attractive varnished wooden box, 9 5/8 x 5 x 1 3/4" with a sable hair brush and mixing pans. Shipping weight 5 lbs. . . . .



No. 9-24 Water Color Set



No. 9-20 Color Kit

No. 9-24—Water Color Set—Any young artist that likes to work in water colors would be interested in having this set of 15 tubes of Hi-test Water Colors, 8 brilliant moist water colors in round pans, one bottle of gum water and water color varnish, 4 layout crayons, charcoal sticks, brushes, art study and tracing paper packed in a hand polished wooden box 15 1/2 x 8 1/4 x 2 1/4", with carry handle. Shipping weight 5 lbs.

No. 9-20—Color Kit—A practical coloring outfit for the artistically inclined, containing 14 wood cups of water colors; 8 wax crayons, 2 enameled water cups, an assortment of outline pictures to color and brush. All coloring materials in assorted colors attractively arranged on build-up in box 13 1/4 x 18 1/4". Lithographed label. Shipping weight 3 lbs.

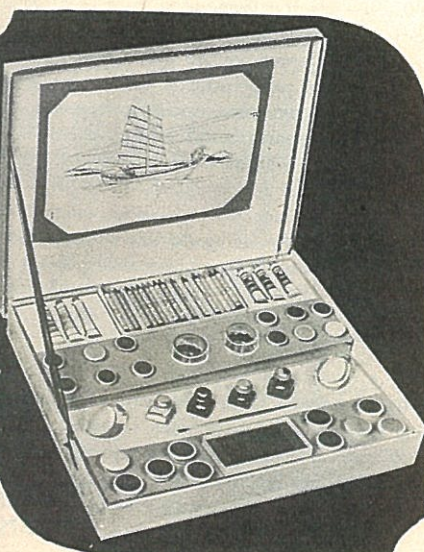
\$1.75

No. 9-18—Junior Arts Paint Box—A beautiful outfit for the child which the build-ups in box are arranged in tiers, each artistically arranged with the following materials: 10 wooden cups and 12 smaller ones of paint, 6 tubes of poster colors, 21 round wax crayons, 8 Broadline crayons, 4 jars of poster colors, 2 enameled mixing pans, 2 glass water cups, and outline pictures to color. Box is covered inside and out with durable Ostrich Hide cover paper. Hinged cover 17". Shipping weight 5 lbs. . . . .

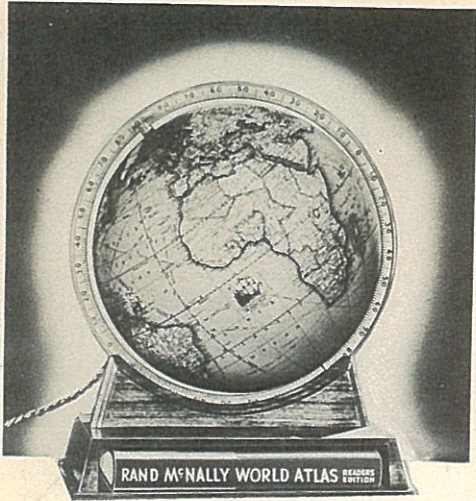
No. 9-22—Golden Glow Paint Box—Designed to meet the needs of the young artist who appreciates quality. Nicely arranged in build-up box are 16 large and 8 smaller wood cups of paint; 4 bottles of Poster Colors, and 5 tubes of water colors, all assorted colors; 8 assorted crayons; 2 glass water cups, brush and a variety of outline pictures to color. Box 13 5/8 x 17 1/8" has hinged cover. Shipping weight 5 lbs.

\$3.25

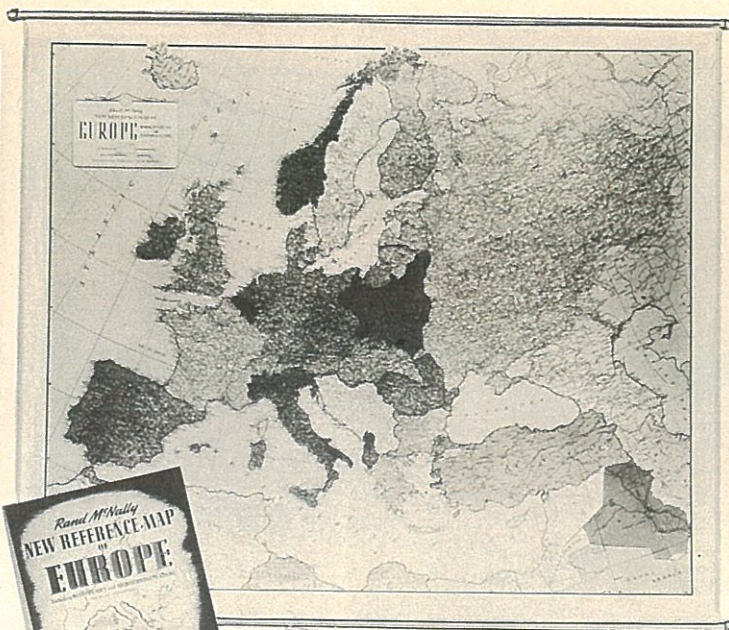
No. 11-57—Brookside Color Kit—Jolly hours ahead for the blossoming young artist who has this color kit to work with. A generous supply of outline pictures and numerous art stencils give the child innumerable subjects for coloring. Fine quality crayons included in both large and small sizes. Complete with drawing and tracing paper. For child to 6 years. In box 17 x 11 1/2". Shipping weight 3 lbs. . . . .



No. 9-18 Junior Arts Paint Box



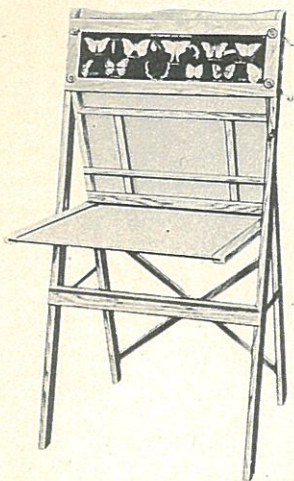
No. 40-121—Electric Globe with Atlas



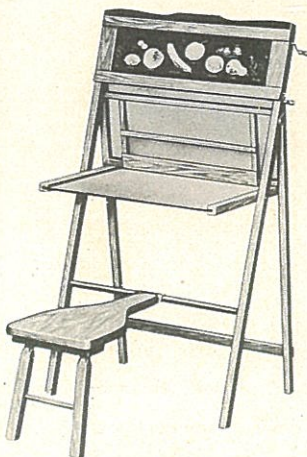
Map of Europe



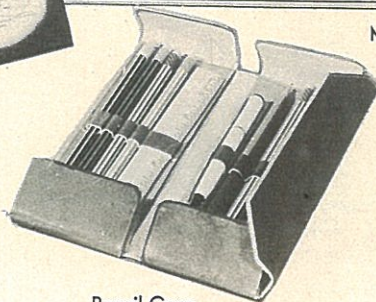
No. 40-48—Electric Illuminated Globe



No. 42-58  
Easel Desk Blackboard



No. 42-59—Easel Desk Blackboard with Stool

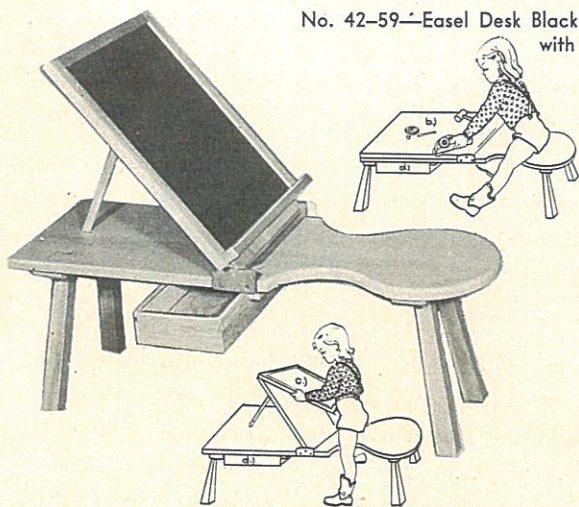


Pencil Case

No. 42-59—Easel Desk Blackboard with Stool—frame of this desk-type blackboard has a natural varnish when folded flat measures 19 x 41" high. With the legs open it becomes a blackboard with the 16 educational picture scroll at the top copied on the washable slate-like surface. The board may be dropped down forming a writing surface 15 x 16" finished in green on which pictures are drawn. The non-collapsible stool is 8" wide, 16 1/2" high, detachable. Complete with chalk and eraser. Shipping weight 12 lbs. . . . . \$7.95

No. 42-58—Easel Desk Blackboard—The wooden frame of this desk-type blackboard has a natural varnish finish and when folded flat measures 20 3/4 x 45" high. With the legs open it becomes a blackboard and when the board is dropped down, it forms a writing surface 16 x 17 1/2" finished in green. The scroll at the top of the board contains 50 educational charts. Chalk and eraser included. Shipping weight 13 lbs. . . . . \$7.95

is mounted on a solid American walnut frame with a movable meridian. Included is the 1934 Edition of the World Atlas containing interesting information. Shipping weight 1 lb. . . . . \$0.20



Cobbler's Bench

No. 44-45—Cobbler's Bench—This copy of the old shoemaker's bench offers an immediate invitation to a child to sit down and draw or write on the detachable 14 x 17" blackboard. The sturdily constructed bench made of knotted pine measures 33" long, 12 1/2" wide and measures 12 1/2" from the ground. Under the bench there is a concealed drawer 5 x 10" to keep drawing materials. When the blackboard is not in use, the drawing board can be lowered making it into a convenient bench, or play table. Shipping weight 15 lbs. . . . . \$18.75

No. 9-1—Map of Europe—Never before European maps meant more to all me and my family. Mounted on heavy muslin to give strength, with stout wooden rods, attached top and bottom and cloth hangers on the sides for use. Countries are shown in five rich colors with blue water areas. All countries, principal cities, rivers, lakes, and mountains clearly shown in legible type and symbols. Shipping weight 40 1/2 x 48 1/2". Shipping weight 1 lb. . . . . \$0.20

No. 2-199—Chalk and Eraser Set—For above. One midget, dustless blackboard eraser and 6 sticks of Alpha dustless chalk packaged in cardboard box. Shipping weight 1 lb. . . . . \$0.20

No. 40-48—Electric Illuminated Globe—The entire scope of geographical reference at one's finger tips with this quality globe of excellent workmanship and design. The 12" illuminated globe ball is mounted on a solid American walnut frame with a movable meridian. Included is the 1934 Edition of the World Atlas containing interesting information. Shipping weight 1 lb. . . . . \$0.20

No. 44-2—Table and Chair Set—You will be most enthusiastic about this sturdily built table and chair set. The set has a maple finish and the well-braced table top is 20" wide, 26" long and 22 1/2" high. Two comfortable arm chairs included. Shipping weight 36 lbs. \$15.00

No. 40-121—Electric Globe with Atlas—The entire scope of geographical reference at one's finger tips with this quality globe of excellent workmanship and design. The 12" illuminated globe ball is mounted on a solid American walnut frame with a movable meridian. Included is the 1934 Edition of the World Atlas containing interesting information. Shipping weight 1 lb. . . . . \$0.20

No. 10-91—Pencil Case—This attractive genuine leather pencil case when folded flat measures 7 1/2 x 1" and contains 6 pencils, pencil sharpener, ruler, blue and red combination crayons and a handsome pocket clip pencil. Shipping weight 1 lb. . . . . \$0.20

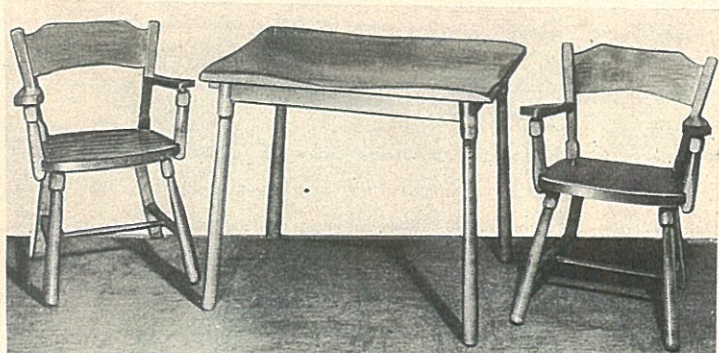


Table and Chair Set