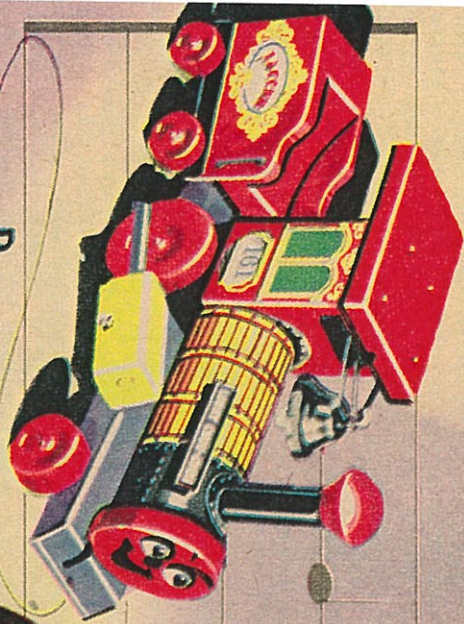
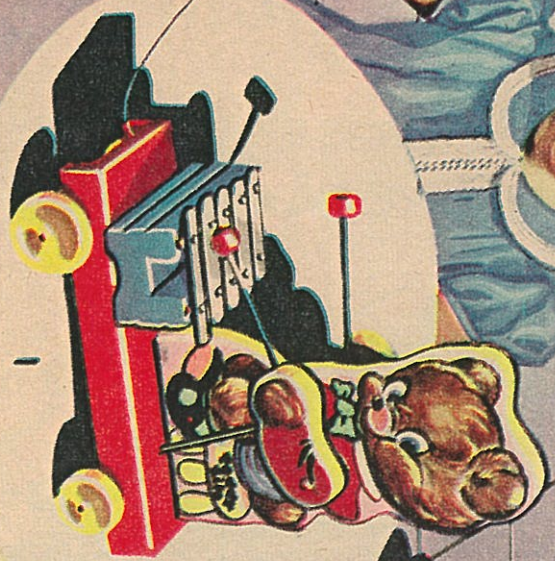




H



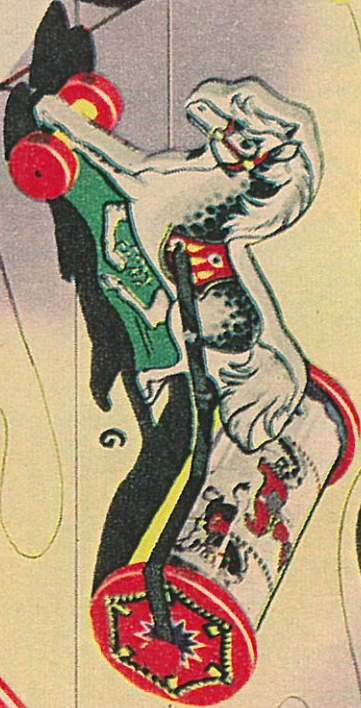
D



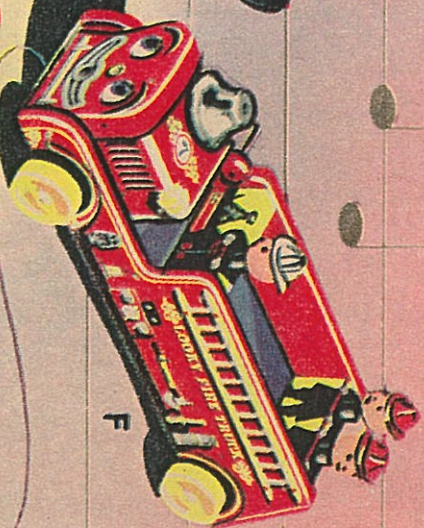
I



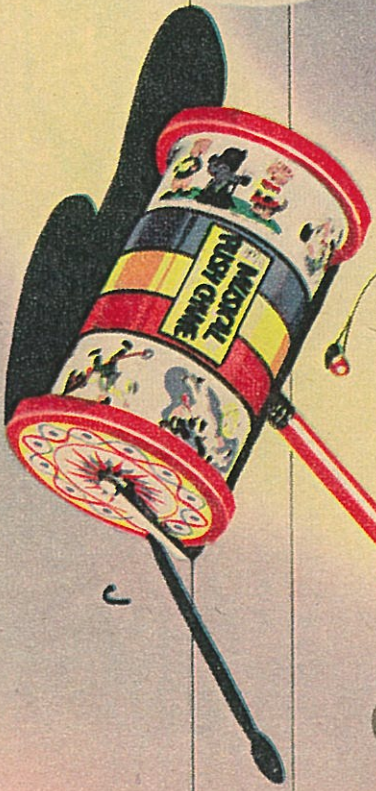
E



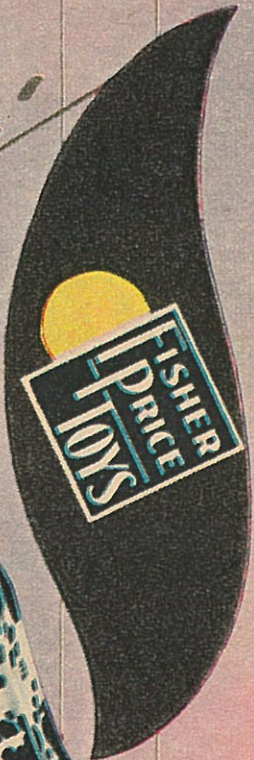
G

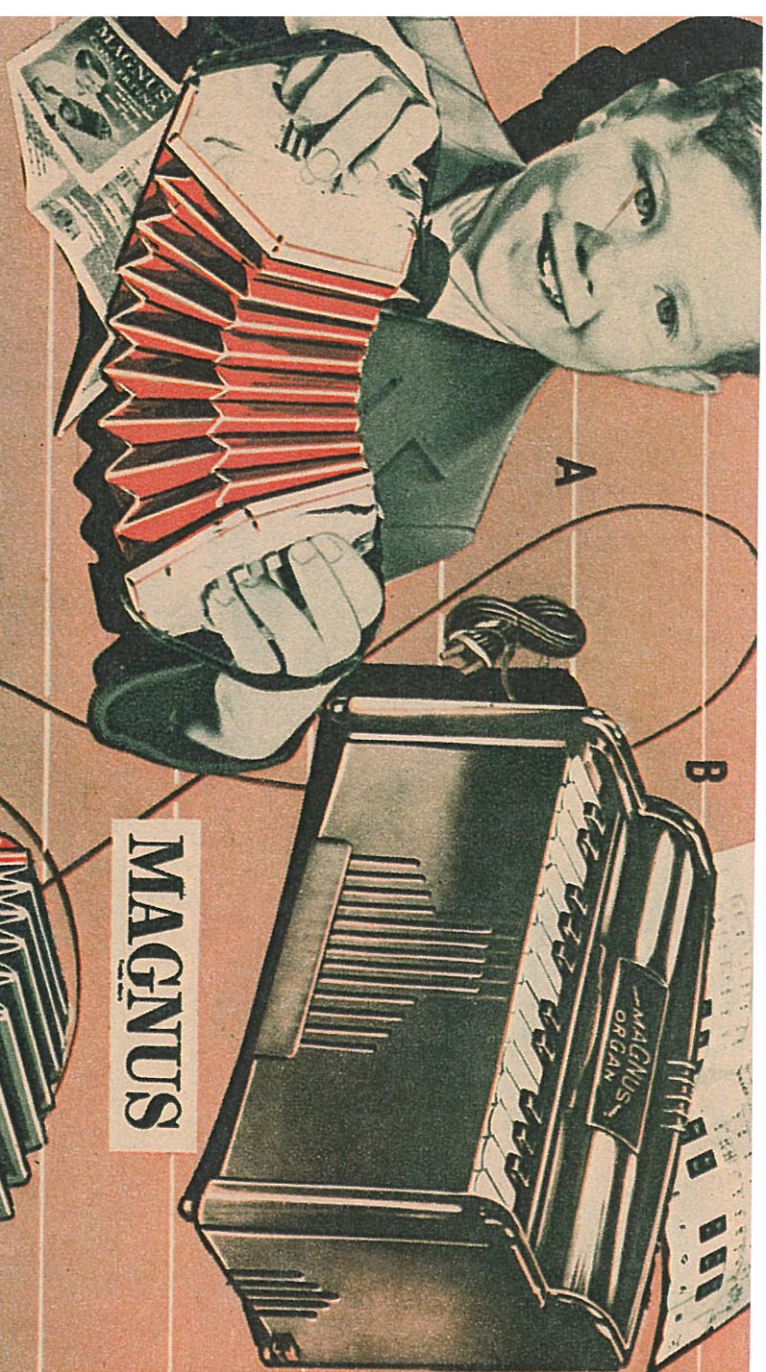


F



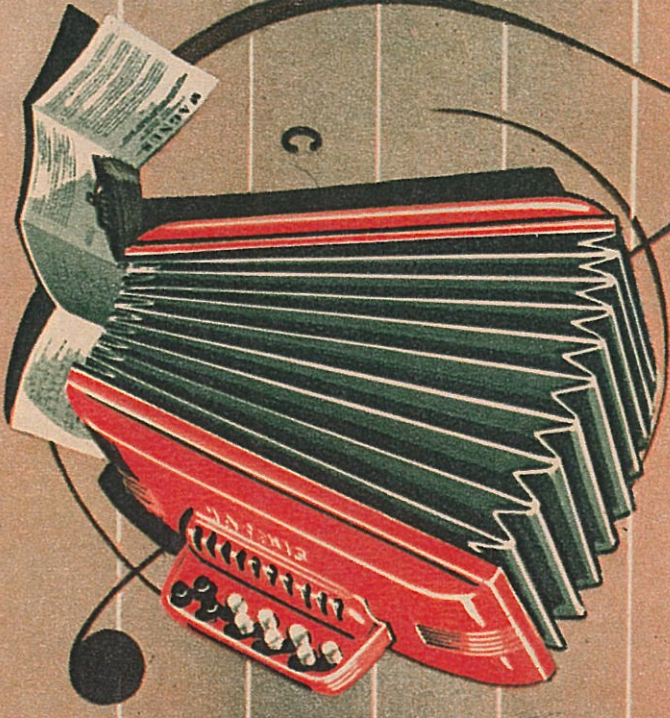
C





# MAGNUS

**A, B, C—MAGNUS MUSICAL TOYS** have full, rich tones—comparable with professional-type equipment. All models include Instruction Song Folios. (A—Concertina.) Tuned to Key of "C"; 6 keys play 1½ octaves. Base key actuates 6 notes for chord—3 notes simultaneously play on the pull—3 on the push. Bellows open to 11½", instrument closes to 5½". \$2.95\*. (B—Portable Electric Organ.) Operates on 110-115 Volts, A.C. Has 2 full chromatic octaves. Reeds respond to slightest touch of keys. Sustained notes and chords full bodied and rich. 11½" long. \$18.75\*. (C—Accordion.) Tuned to Key of "C". Has 10 quick-acting ivory-like buttons. Bellows open to 14", closed instrument measures 4" x 4½" x 8½". \$3.95\*. (Tr. size Accordion, 6 keys, \$1.69\*.)



**D—HURDY GURDY.** As the crank handle on this )  
tic Hurdy Gurdy is turned, the monkey dances  
moderate expense. The principal feature of t  
toys is a patented music box which renders sur  
ingly true tone values and plays a familiar song  
appropriate to each toy simply by turning a cr

**E—COWBOY GE-TAR.** This attractive plastic to  
so realistic, it actually can be tuned like a flu  
strument. It plays a popular song when the c  
handle is turned—but if desired, can be strum  
with the pick furnished for that purpose. Over  
head cord attached. Priced at \$1.39\*.

**F—SQUARE DANCING TWINS.** Here are Dosie  
Dokes in the latest style western attire, mounte  
a metal stage 7¼" in diameter. This high-step  
pair whirls 'round and 'round to the tune  
familiar western songs as the crank hand  
turned. Both dolls are 6½" tall and the pric  
the complete toy is \$2.98\*.

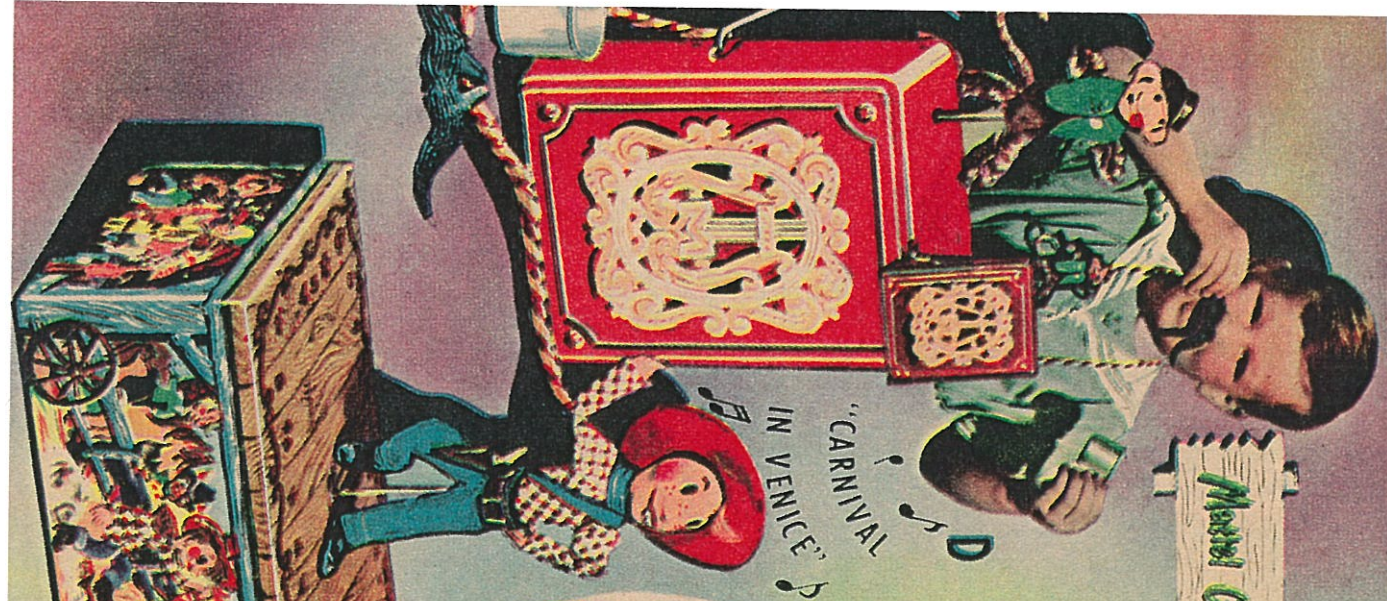
**G—DANCING DUDE MUSIC BOX.** Here is an c  
fascinating toy. The appropriately attired pl  
"Dude" jigs in humorous fashion on the 8¼" s  
to a real western song, as the crank hand  
turned. The action is extremely amusing in  
Mattel Creation, which is priced at \$1.98\*.

**H—JACK-IN-THE-MUSIC-BOX.** Every grown-up wi  
member this old-time favorite—but now it's n  
with fascinating new appeal. As the crank ha  
is turned on this new style jack-in-the-box, the p  
plays "Pop Goes The Weasel". When the  
reaches the sound representing "Pop", the box  
springs open and the clown's head pops up. Meas  
5⅞" wide x 5¾" high and is priced at \$1.98

\*Prices Approximate—See Page Four

Pages Twenty and Twenty-one

Master Creations



"CARNIVAL  
IN VENICE"

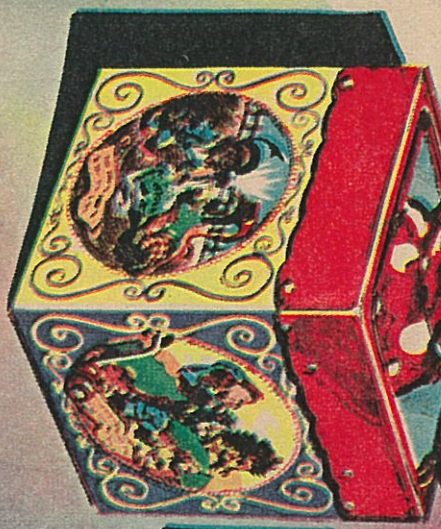


"TURKEY  
IN THE STRAW"

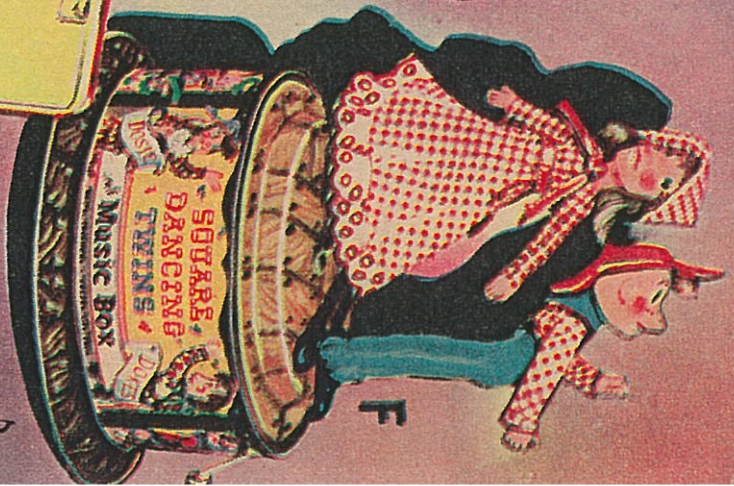


"ON THE LONE PRAIRIE"  
OR  
"RED RIVER VALLEY"

E



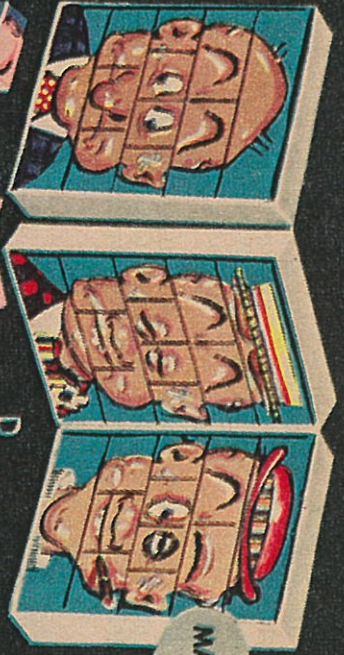
"POP GOES THE WEASEL"



"PUT YOUR  
LITTLE FOOT  
RIGHT OUT"

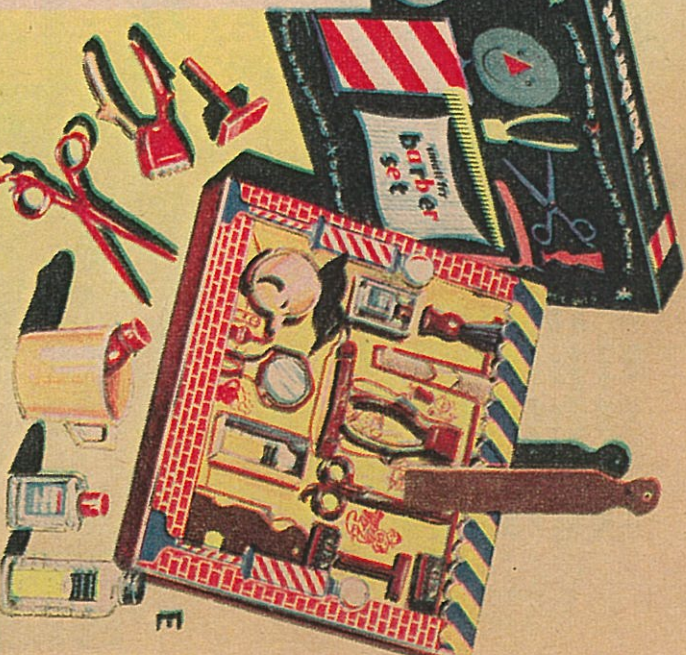
F





GASTON MANUFACTURING COMPANY

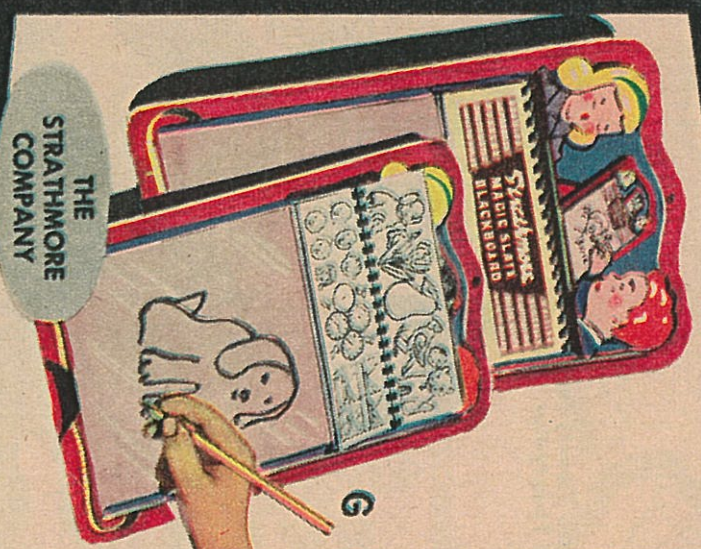
PRESSMAN TOY CORPORATION



E



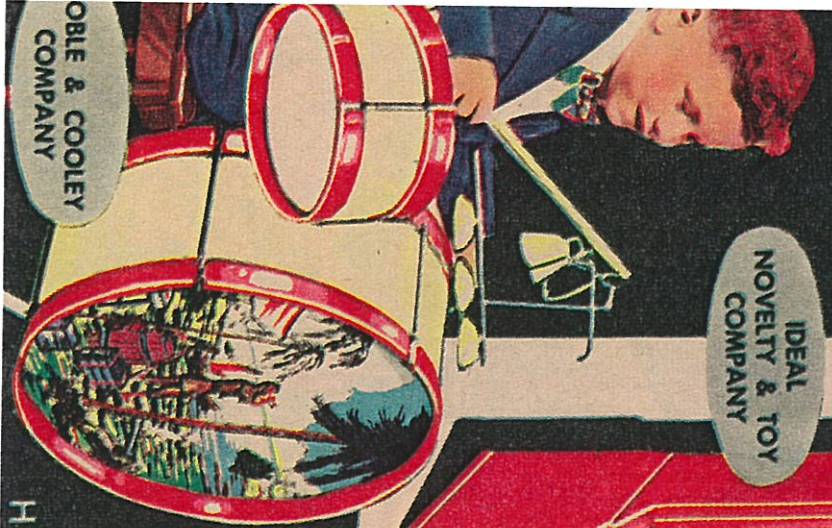
IDEAL NOVELTY & TOY COMPANY



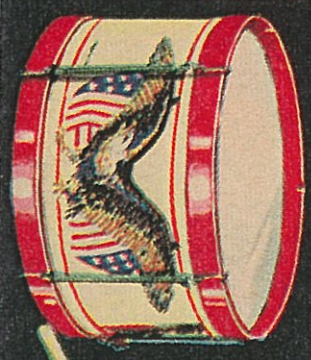
THE STRATHMORE COMPANY



LANGWOOD PRODUCTS, INC.



OBLE & COOLEY COMPANY



I

H

HUBLEY KIDDE TOYS are popular with parents as well as children, because they offer so much, for so little! Designed with accurate realism and built of solid metal for lasting pleasure, their excellent die-cast details, bright and permanent finishes, in addition to novel play features, will insure their welcome at all times—wherever children see them.

**B—BELL TELEPHONE TRUCK.** Has a nickleled winch and boom that operate with crank handle (not shown), on left side of truck. Equipment includes a trailer and telegraph pole, also 3 digging tools. Truck 10½" long, with rubber wheels. \$1.50\*.

**C—STAKE TRUCK.** Has knee action rear wheels, retractable trailer support and removable sides which can transform it into a flat bottom truck. 17½" long with rubber wheels. \$3.98\*.

**D—TOW TRUCK.** Equipped with nickleled "searchlight", also winch and boom that operate with crank handle (not shown), on left side of truck. Measures 9¾" long, with rubber wheels, \$.89\*.

**E—MOTORCYCLE.** Here is a big, realistic motorcycle, and it carries a removable "cop", 8½" long, equipped with rubber wheels. A very popular toy. \$1.50\*.

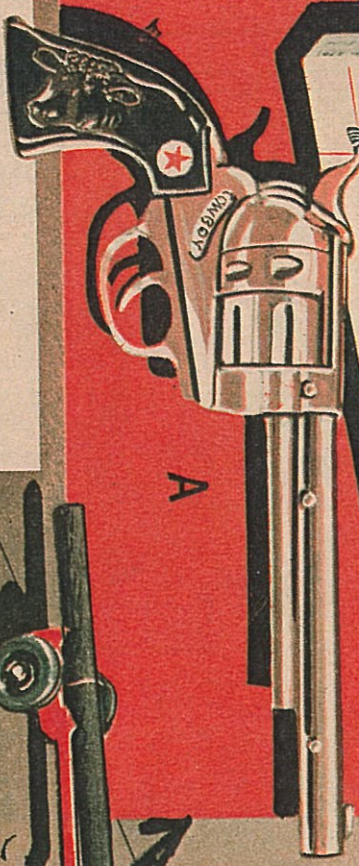
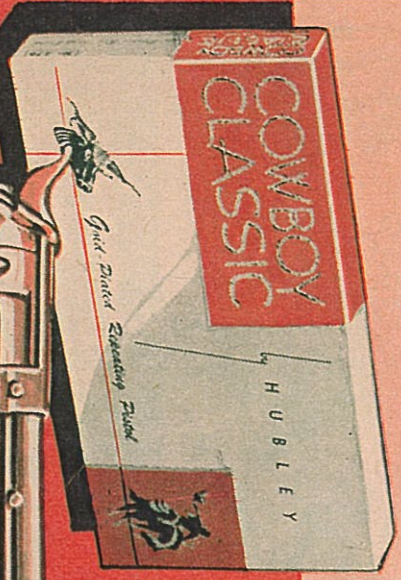
**F—DUMP TRUCK.** Built with a lever that raises while tail gate opens to unload. 9½" long with wheels. \$.89\* (Also recommended: 7¼" Tractor shown in Farm set—see item "J"—\$.89\*.)

**G—AUTO TRANSPORT.** Trailer has runway for ing and unloading 4 plastic autos in varied colors. Vehicles have rubber wheels. The overall length and trailer is 18". \$3.98\*.



\*Prices Approximate  
—See Page Four

Pages Twenty-four  
and Twenty-five



**A—COWBOY PISTOL.** In its striking gift package, this 24-carat gold plated 1¼" repeater is really beautiful. Has a revolving cylinder and automatic opening device to add realism. \$3.00\*.

