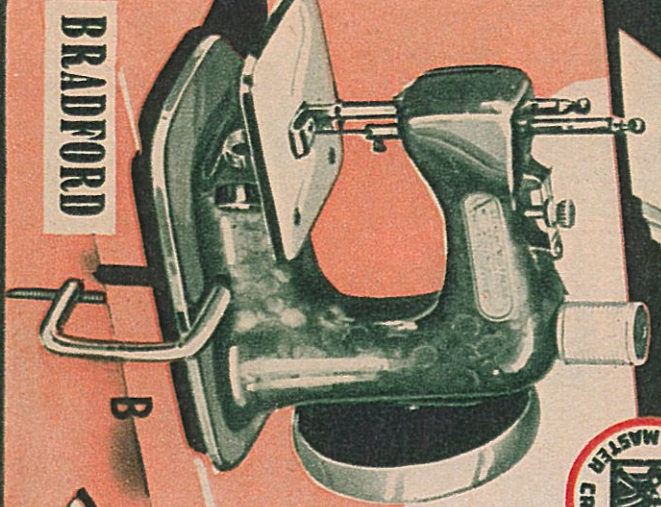
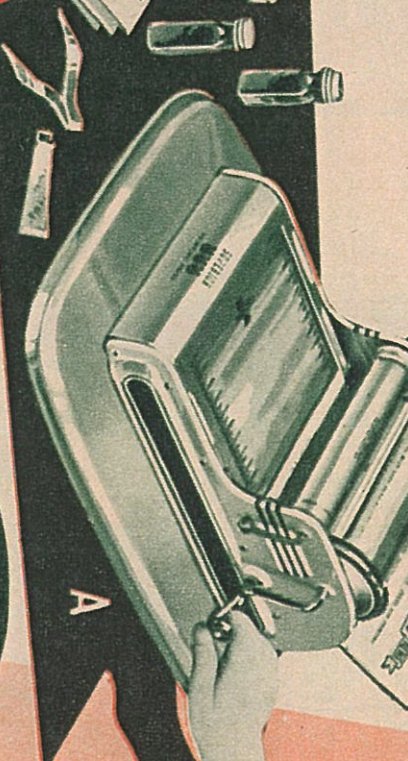


Walco
BEAD COMPANY

with rubber type, ink, paper, type slots, illustration cuts and instructions. Youngsters can print their own newspapers, announcements, invitations, etc. Copy of Printers Journal included. This extraordinary is priced at \$7.95*. (Smaller presses with fewer accessories available at \$2.25* and \$5.95*.)

body encloses all gear mechanisms. Metal clamp holds machine on table-top. Over 8" long and readily practical. \$5.95*. (Also recommended: "Gateway Jr." Sewing Machine, fewer features, \$2.98*.)

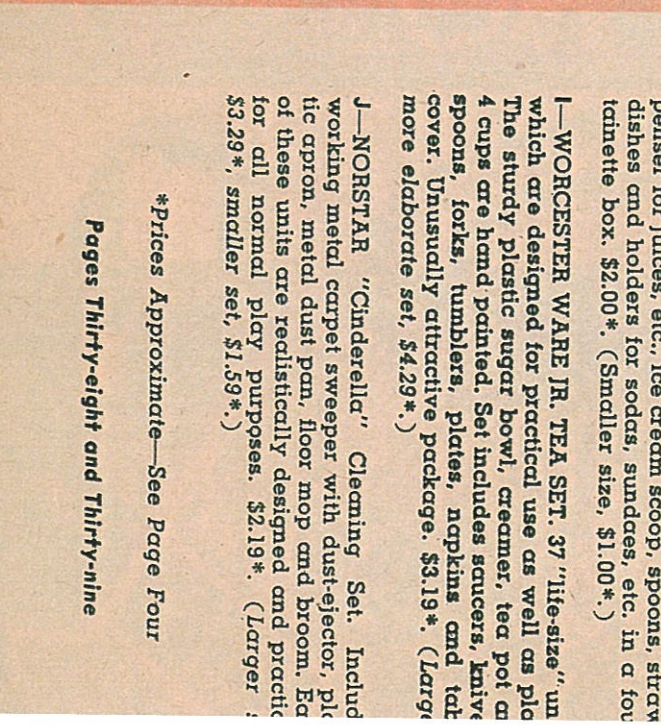
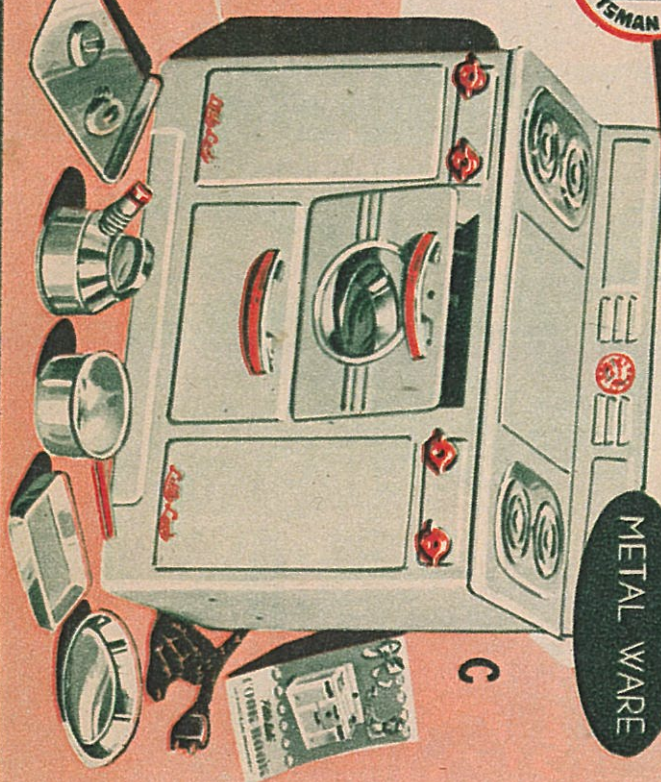
110-120 volts, Universal current. Comes with 7 aluminum utensils, including whistling tea kettle, and cook book. An excellent medium for practical play activity. \$7.95*. (Smaller model, \$5.95*.)



BRADFORD



METAL WARE



D, E, F, G, H—BANNER PLASTIC TOYS. These toys are ingeniously designed and molded of practically unbreakable plastic, to offer wide scope and lasting pleasure in imitative play. (**D—Bannerone Dinn cabinet-type package.** There are 4 each cups, saucer cake plates, knives, forks and spoons; 1 each creamer sugar bowl, tea pot, cover and tea pot stand. \$2.00 (Smaller set, service for 2, \$1.00*.) (**E—Banner D Luxe Refreshment Set.**) 6 each sherbets and goblets with sparkling clear tops and colored bases, old cake plates, Lazy Susan tray, pitcher, napkin holder and napkins. 27 pieces in all, contained in cabinet-type box. \$2.00*. (Smaller set, 10 pieces, \$1.00*.) (**F—Banner Metakone Service Ensemble.**) Molded in Polystyrene with metalized silver-like finish, this attractive set simulates the finest type of silver service. Consists of Lazy Susan tray, 4 each goblets, sherbet knives, forks and spoons; also 1 each pitcher, creamer sugar and a complete plastic Metakone Tableware Chest (see item "G"), consisting of 16 separate units \$4.95*. (**G—Metakone Tableware and Chest.**) 4 each knives, forks and spoons; 1 each cake server, butter knife, salt and pepper shaker in a plastic chest, size 8 1/2" x 6" x 1". \$1.00*. (**H—Fountainette.**) 39 washable plastic pieces, including a working miniature dispenser for juices, etc., ice cream scoop, spoons, straw dishes and holders for sodas, sundaes, etc. in a fountainette box. \$2.00*. (Smaller size, \$1.00*.)

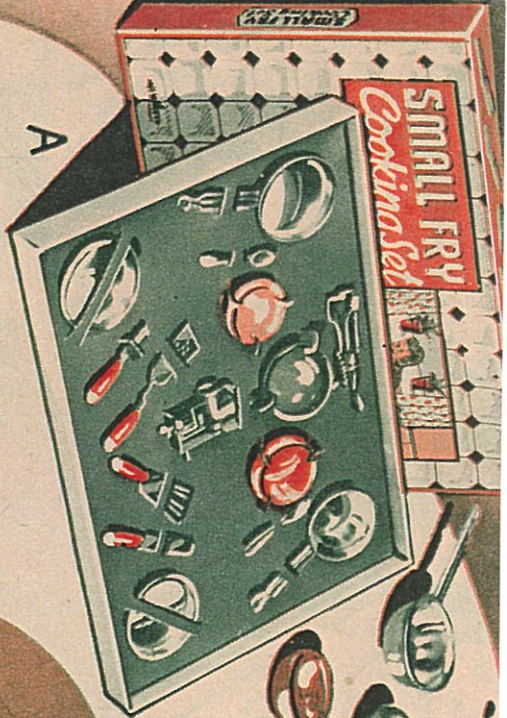
I—WORCESTER WARE JR. TEA SET. 37 "life-size" units which are designed for practical use as well as play. The sturdy plastic sugar bowl, creamer, tea pot and 4 cups are hand painted. Set includes saucers, knives, spoons, forks, tumblers, plates, napkins and table cover. Unusually attractive package. \$3.19*. (Larger more elaborate set, \$4.29*.)

J—NORSTAR "Cinderella" Cleaning Set. Includes working metal carpet sweeper with dust-ejector, plastic apron, metal dust pan, floor mop and broom. Each of these units are realistically designed and practical for all normal play purposes. \$2.19*. (Larger set, \$3.29*, smaller set, \$1.59*.)

*Prices Approximate—See Page Four

Pages Thirty-eight and Thirty-nine

SMALL FRY
Cooking Set

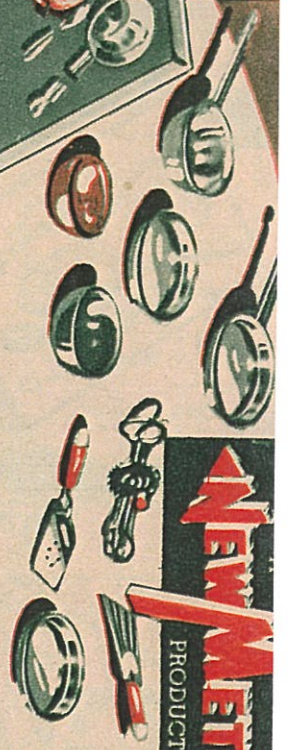


A

A—“SMALL FRY” KITCHEN UTENSIL SET. This 15-piece set even has a miniature meat grinder and egg beater. Other units are aluminum saucepan, frying pan, 2 pie plates, 2 teaspoons, 3 plastic bowls, pan-cake turner, spatula, batter whip and apple corer. \$1.69*. (Smaller set, fewer utensils, \$1.19*.)

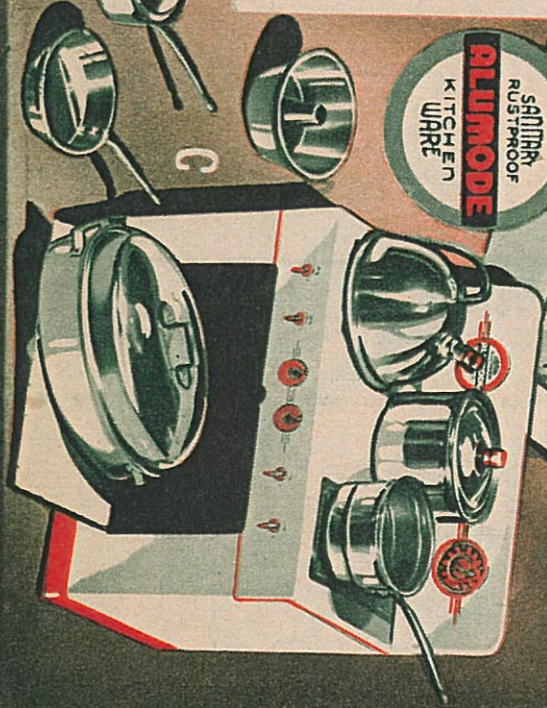
B, C—ALUMINUM SPECIALTY sets are rustproof, sanitary, and have smooth edges. (B—Wonderland Coffee Pot Set.) A 31-piece service for 4 including coffee pot, cups, saucers, plates, serving tray, knives, forks, spoons, creamer, sugar, butter knife and sugar spoon. \$1.95*. (Also available as Tea Set, \$1.95*.) (C—Kiddycook Cook and Bake Set.) 20 pieces, including oval roaster, double boiler, jelly and cake mold, frying pan, layer cake pan, covered sauce pot, tubed cake pan and whistling tea kettle. Packaged in range type display box. \$1.95*.

NEW METT
PRODUCT



B

ALUMODE
SPECIALTY
RUSTPROOF
KITCHEN
WARE



C

WOLVERINE HOUSEKEEPING TOYS. Modern design serviceable construction, and unique play feature have made these toys famous throughout the world. Their solid steel construction makes them safe, sound and sure to provide long-lasting pleasure.

D—PLAY SINK. Has an ingenious swivel-type fence that actually starts and stops running water, which flows from reservoir attached to rear of sink. Plastic basin has adjustable stopper. Hinged door of sink opens. 10 $\frac{3}{4}$ " high, \$2.00*.

E—PLAY STOVE. Equipment includes plastic pots with covers, frying pan and spatula. Hinged door opens and the 4 plastic push-buttons actually operate. 12" high, \$2.00*. (Larger stove, 14" high, \$3.69*.)

F—KITCHEN CABINET. Includes miniature play packages of famous grocery products, 6 plastic utensils, rolling pin and a bread board. The 4 doors in the cabinet swing open. 15 $\frac{3}{4}$ " high, \$2.29*. (Also recommended: Larger Kitchen Cabinet with removable top which can also be used as table. Complete cabinet 20 $\frac{1}{8}$ " high, \$3.98*.)

G—WASHING MACHINE. Modeled after the latest style agitator-type machines. By operating the handle agitator swirls clothes through soapy water and the action can be observed through the transparent plastic top. Wringer is adjustable. 12" high, \$2.00*.

H—REFRIGERATOR. 2 doors open—1 to freezer compartment, the other into the refrigerator. Plastic "ice cube" trays, miniature play packages of famous grocery products, also simulated food items included for added activity. 13 $\frac{1}{2}$ " high, \$2.00*.

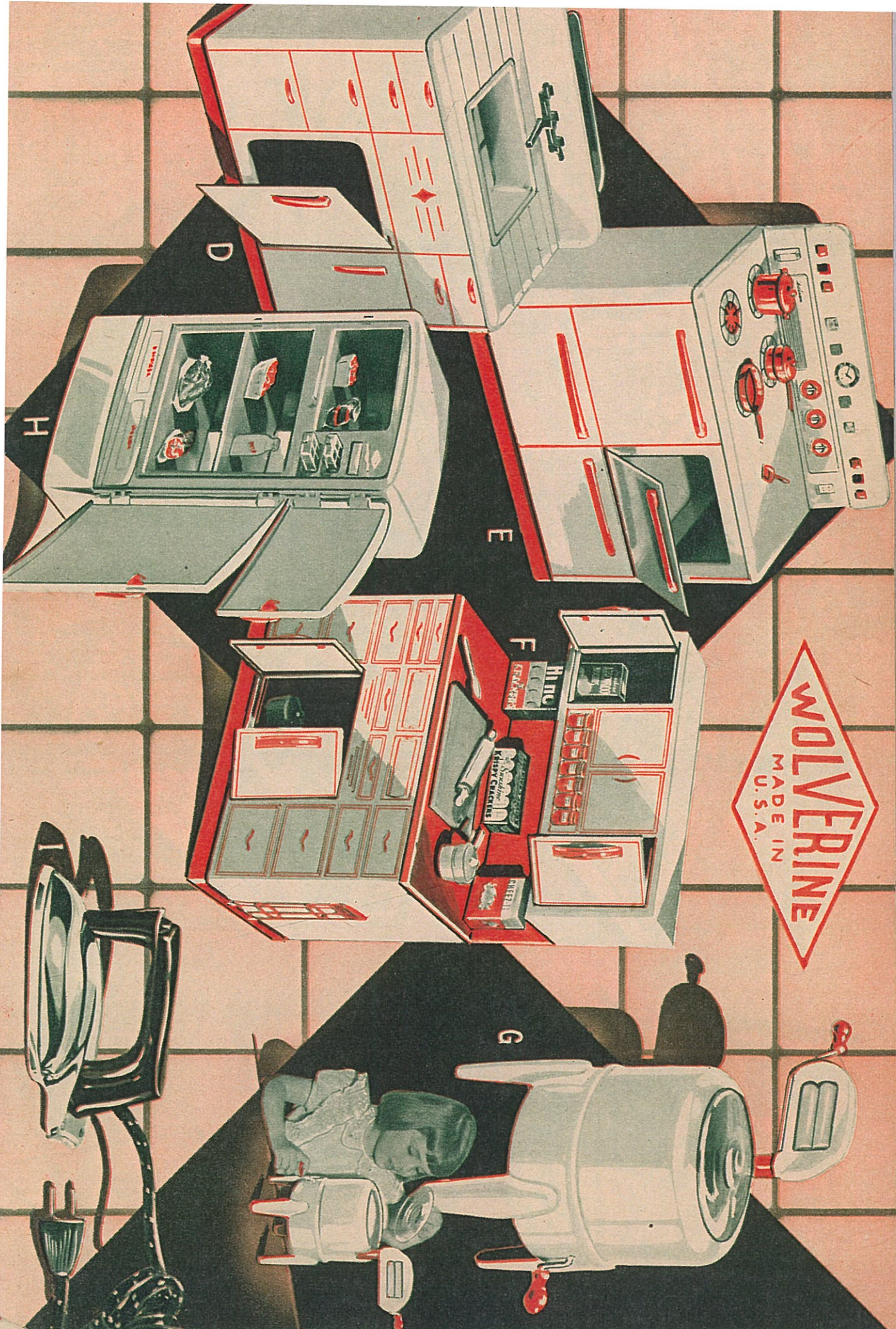
I—ELECTRIC IRON. This U.I. Approved iron is practical—but it never gets too hot. Can be plugged into any A.C. socket. 6 $\frac{1}{4}$ " long with Bakelite handle \$2.39*. (Smaller model, \$1.00*.)

NOTE: Items "D", "E", and "H" available as on complete Kitchen Ensemble, price on request.

*Prices Approximate—See Page Four

Pages Forty and Forty-one

WOLVERINE
MADE IN
U.S.A.





PRESSMAN
TOY
CORPORATION

MODEL-CRAFT, INC.

HASSENFELD
BROS., INC.

B

C